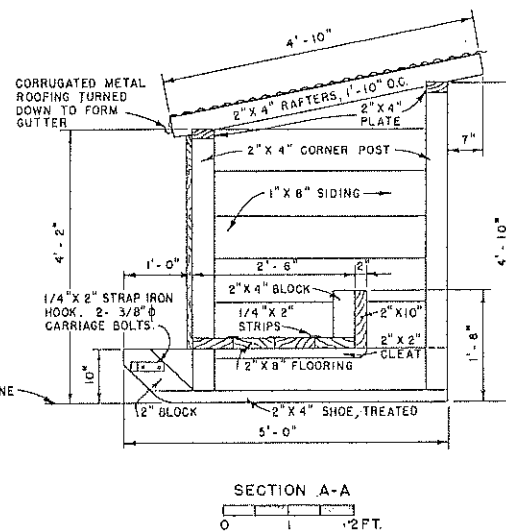
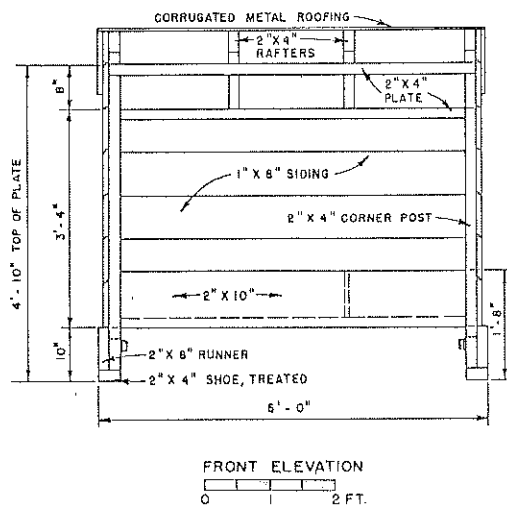


NOTE
FACE AWAY FROM PREVAILING WINDS.



ESTIMATE OF MATERIALS

LUMBER

SHOES	2" x 4" x 10'-0"	1	PCS
RUNNERS	2" x 8" x 10'-0"	1	"
CORNER POSTS	2" x 4" x 10'-0"	2	"
[USE SURPLUS AS NAILING BLOCKS FOR BOX]			
FLOORING	2" x 8" x 12'-0"	2	"
SIDING (SIDES)	1" x 8" x 8'-0"	7	"
SIDING (BACK)	1" x 8" x 12'-0"	3	"
PARTITION	1" x 8" FROM SIDING		
PLATES	2" x 4" x 12'-0"	1	"
RAFTERS	2" x 4" x 10'-0"	2	"
STRIPS	1/4" x 2" x 8'-0"	3	"
BOX	2" x 10" x 10'-0"	1	"
[USE SURPLUS FOR RUNNER BLOCKS]			
GLEATS	2" x 2" x 8'-0"	1	"

MISCELLANEOUS

GALV. METAL ROOF.	2'-0" x 5'-0"	3	SHEETS
STRAP IRON	1/4" x 2" x 10"	2	PCS
CARRIAGE BOLTS	3/8" φ - 5" LONG	4	
NAILS - COMMON	6d	1	LB
"	"	1	1/2 LB
NAILS - ROOF. (GALV.)	16d	1	1/4 LB

COOPERATIVE EXTENSION WORK IN
AGRICULTURE AND HOME ECONOMICS
DEPARTMENT OF AGRICULTURAL ENGINEERING
UNIVERSITY OF MARYLAND

AND
UNITED STATES DEPARTMENT OF AGRICULTURE COOPERATING

SALT & MINERAL BOX
FOR CATTLE

USDA '53 EX. 5759 SHEET 1 OF 1

BASED ON TEX. PLAN 230