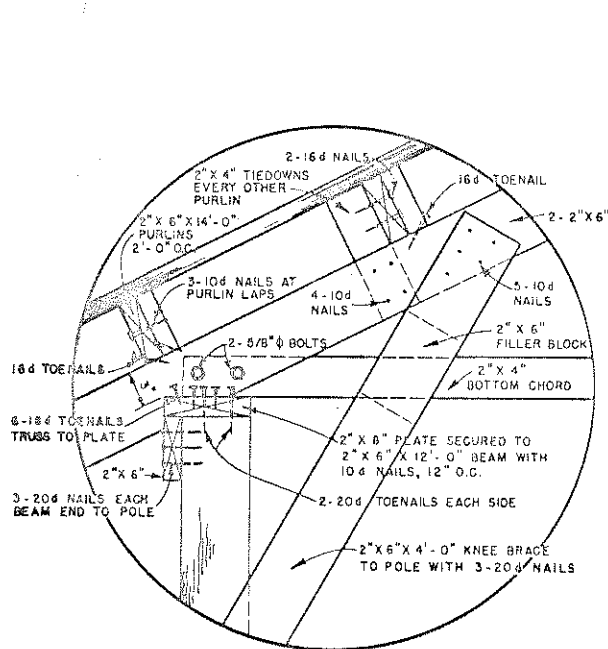


COOPERATIVE EXTENSION WORK IN AGRICULTURE AND HOME ECONOMICS
 DEPARTMENT OF AGRICULTURAL ENGINEERING
 UNIVERSITY OF MARYLAND
 AND
 UNITED STATES DEPARTMENT OF AGRICULTURE COOPERATING

CATTLE BARN, POLE CONSTRUCTION

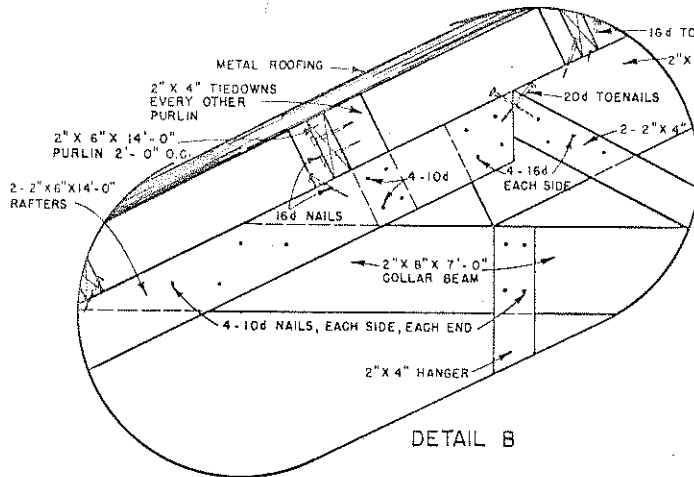
USDA '53 EX. 5754 SHEET 1 OF 3

BEF

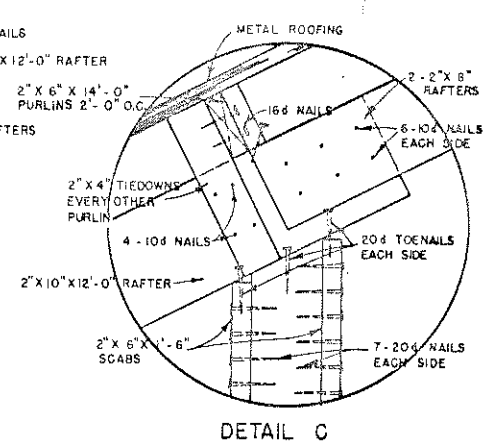


DETAIL A

* PURLIN SPACING TO CONFORM TO MANUFACTURERS RECOMMENDATIONS FOR THE TYPE & THICKNESS OF THE CORRUGATED ROOFING SELECTED.

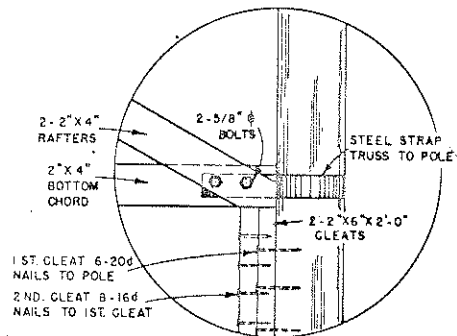
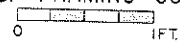


DETAIL B

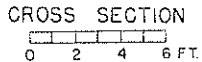
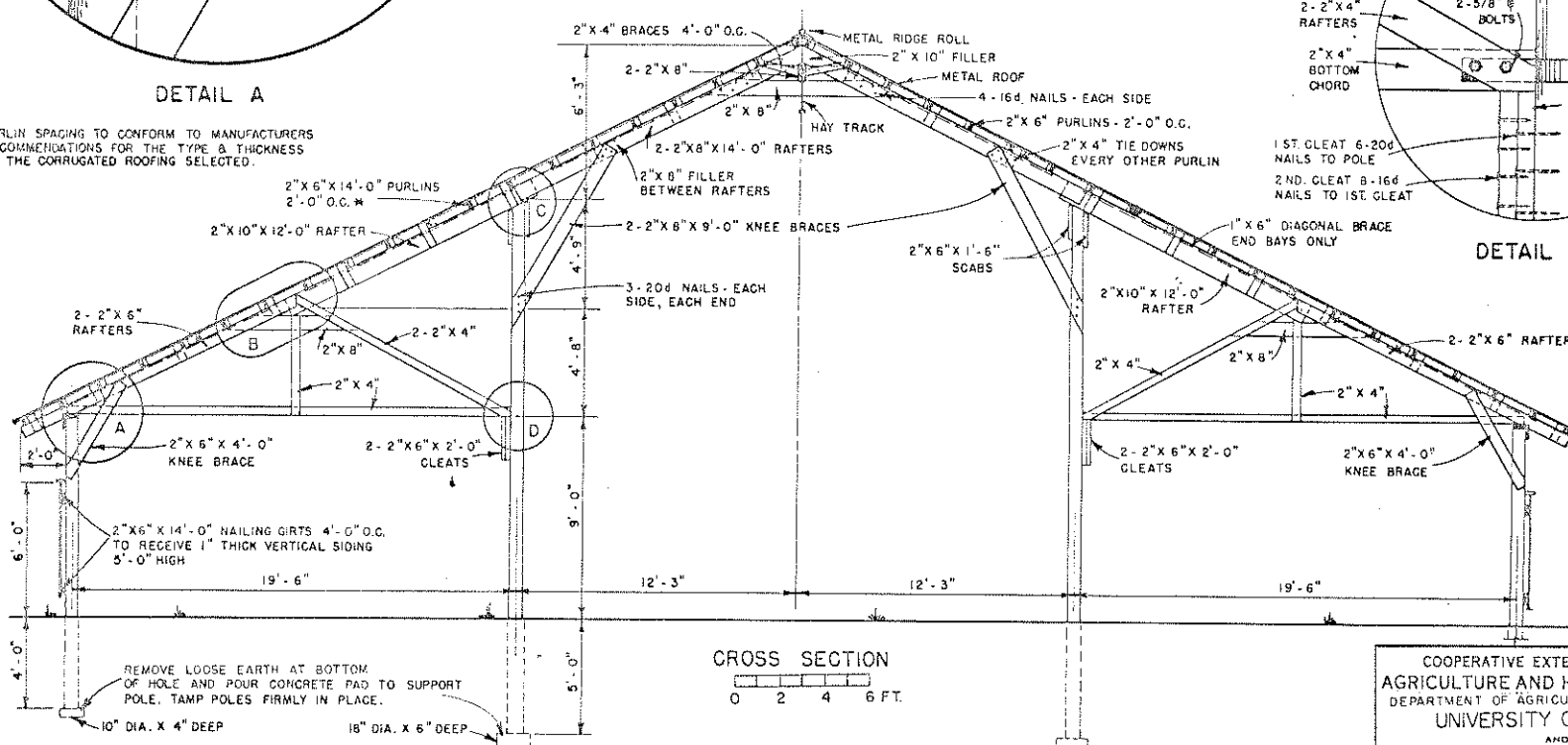


DETAIL C

DETAILS OF FRAMING CONNECTIONS



DETAIL D



SEQUENCE OF CONSTRUCTION

NOTE:

POLES ARE TO HAVE MIN. 6" TOP AND BE PRESSURE TREATED WITH WOOD PRESERVATIVE.

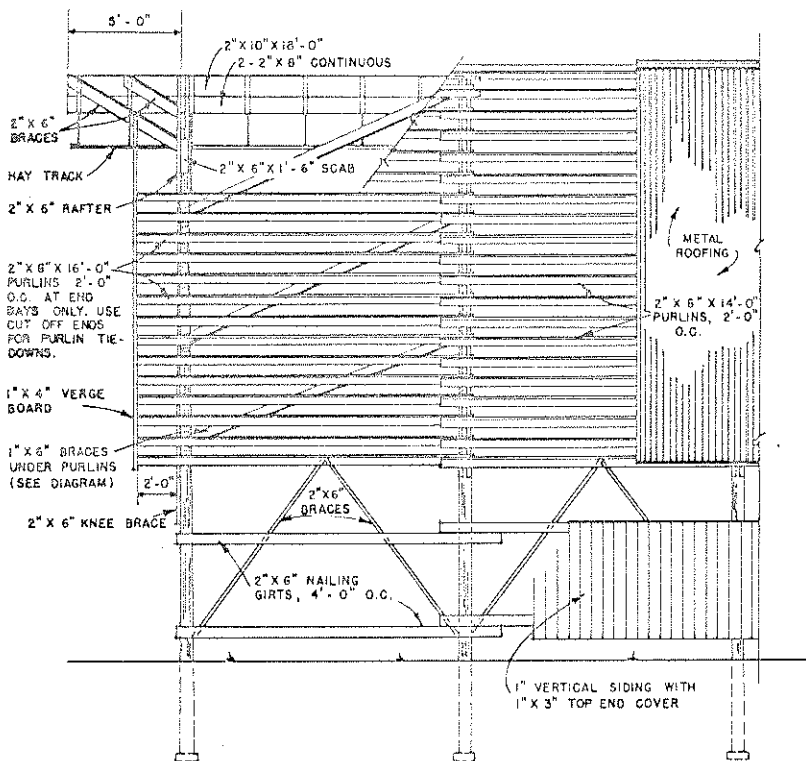
1. SET AND ALIGN POLES, PUT UP WALL BEAMS (DETAIL A) AND POLE CLEAT (DETAIL D).
2. BUILD TRUSSES ON JIG AND LIFT ON TO BEAM AND CLEAT. USE TEMPORARY BRACES TO KEEP PLUMB.
3. PUT ON RAFTERS, KNEE BRACES AND COLLAR TIES.
4. PUT ON PURLINS, ERECTING TEMPORARY SCAFFOLD AS MAY BE NECESSARY, TO COMPLETE FRAMING.

COOPERATIVE EXTENSION WORK IN
 AGRICULTURE AND HOME ECONOMICS
 DEPARTMENT OF AGRICULTURAL ENGINEERING
 UNIVERSITY OF MARYLAND
 AND
 UNITED STATES DEPARTMENT OF AGRICULTURE COOPERATING

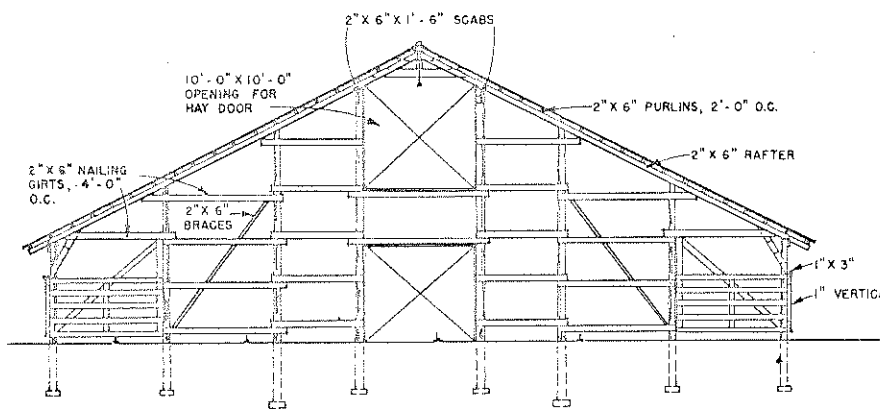
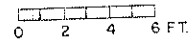
CATTLE BARN, POLE CONSTRUCTION.

USDA '53 EX. 5754 SHEET 2 OF 3

Beef



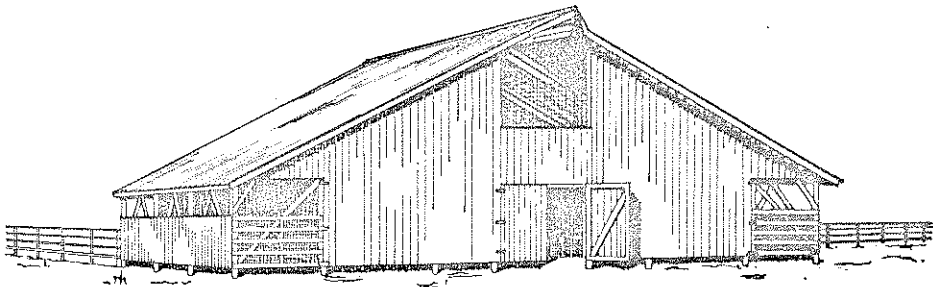
TYPICAL SIDE FRAMING



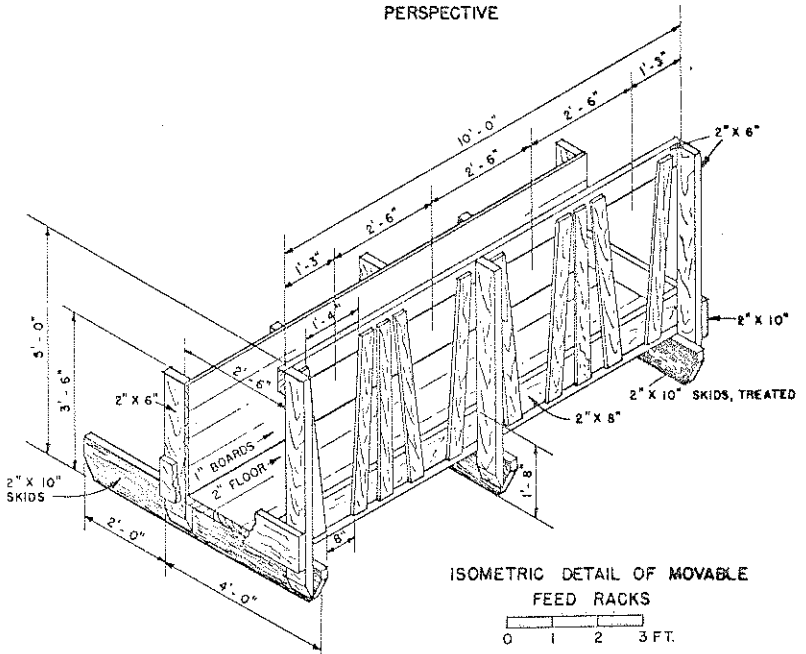
END FRAMING



NOTE:
 ROOF IS DESIGNED FOR EQUIVALENT VERTICAL SNOW LOAD OF 10* PER SQ. FT. AND A NET UPLIFT DUE TO WIND OF 11* PER SQ. FT. NORMAL TO ROOF SURFACE. UPLIFT REQUIRES ANCHORING OF RAFTERS TO PURLINS WITH 2" X 4" TIES WITH 4-10d NAILS, EACH END.



PERSPECTIVE



ISOMETRIC DETAIL OF MOVABLE FEED RACKS

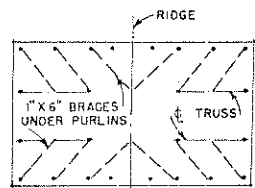
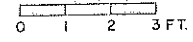


DIAGRAM SHOWING DIAGONAL BRACES UNDER PURLINS

COOPERATIVE EXTENSION WORK IN AGRICULTURE AND HOME ECONOMICS DEPARTMENT OF AGRICULTURAL ENGINEERING UNIVERSITY OF MARYLAND AND UNITED STATES DEPARTMENT OF AGRICULTURE COOPERATING		
CATTLE BARN, POLE CONSTRUCTION		
USDA '53	EX. 5754	SHEET 3 OF 3

BEEF