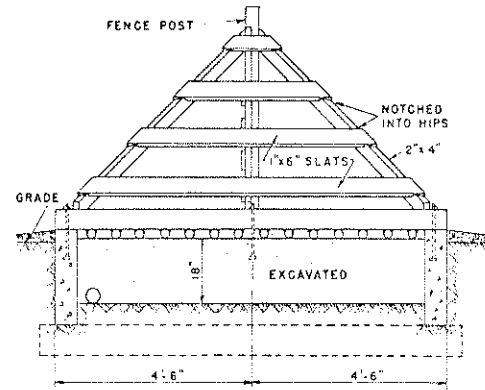
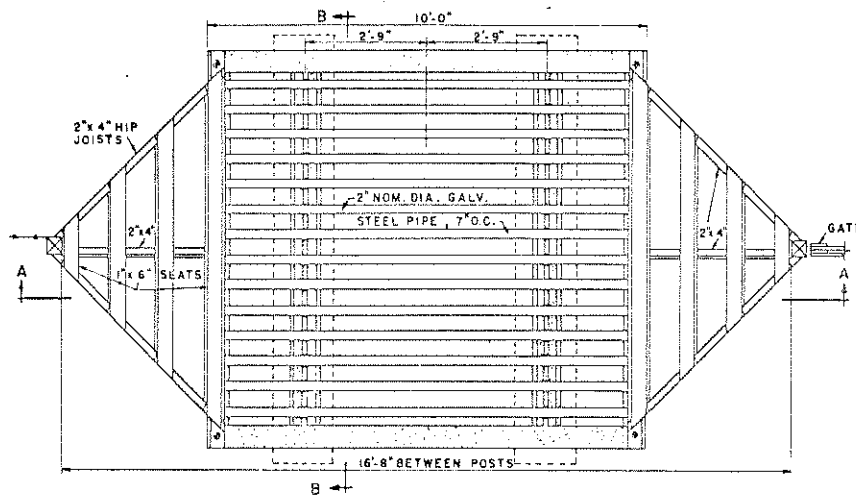


SECTION A-A



SECTION B-B



PLAN

BILL OF MATERIALS

LUMBER	
FRAMING:	1 PCS. 2"x4"x12'-0"
	2- " 2"x4"x14'-0"
SLATS:	6- " 1x6"x12'-0"
GUARD RAILS:	2- " 4"x6"x9'-0"
CONCRETE:	
	2 3/4 CU. YDS. (1:3:5 MIXTURE)
CEMENT:	13 SACKS
SAND:	1.4 CU. YDS.
AGGREGATE:	2.35 CU. YDS.
MISCELLANEOUS	
PIPES:	14- PCS. 2" NOM. DIA. EXTRA STRONG GALV. STEEL PIPE OR RAILS, 10'-0" LONG
ANCHOR BOLTS:	6- 1/2"x16"
REINF. RODS:	4- 2-1/2"x9'-0"

NOTE: A WIDE GATE ADJACENT TO GUARD IS SUGGESTED FOR PASSAGE OF EXTRA WIDE EQUIPMENT AND LIVESTOCK.
ALL WOOD TO BE TREATED WITH PRESERVATIVE.

SCALE: 0 1 2 3 FT.

COOPERATIVE EXTENSION WORK IN AGRICULTURE AND HOME ECONOMICS DEPARTMENT OF AGRICULTURAL ENGINEERING UNIVERSITY OF MARYLAND AND UNITED STATES DEPARTMENT OF AGRICULTURE COOPERATING		
CATTLE GUARD CONCRETE AND STEEL		
USDA '52	EX. 5752	SHEET 1 OF 1