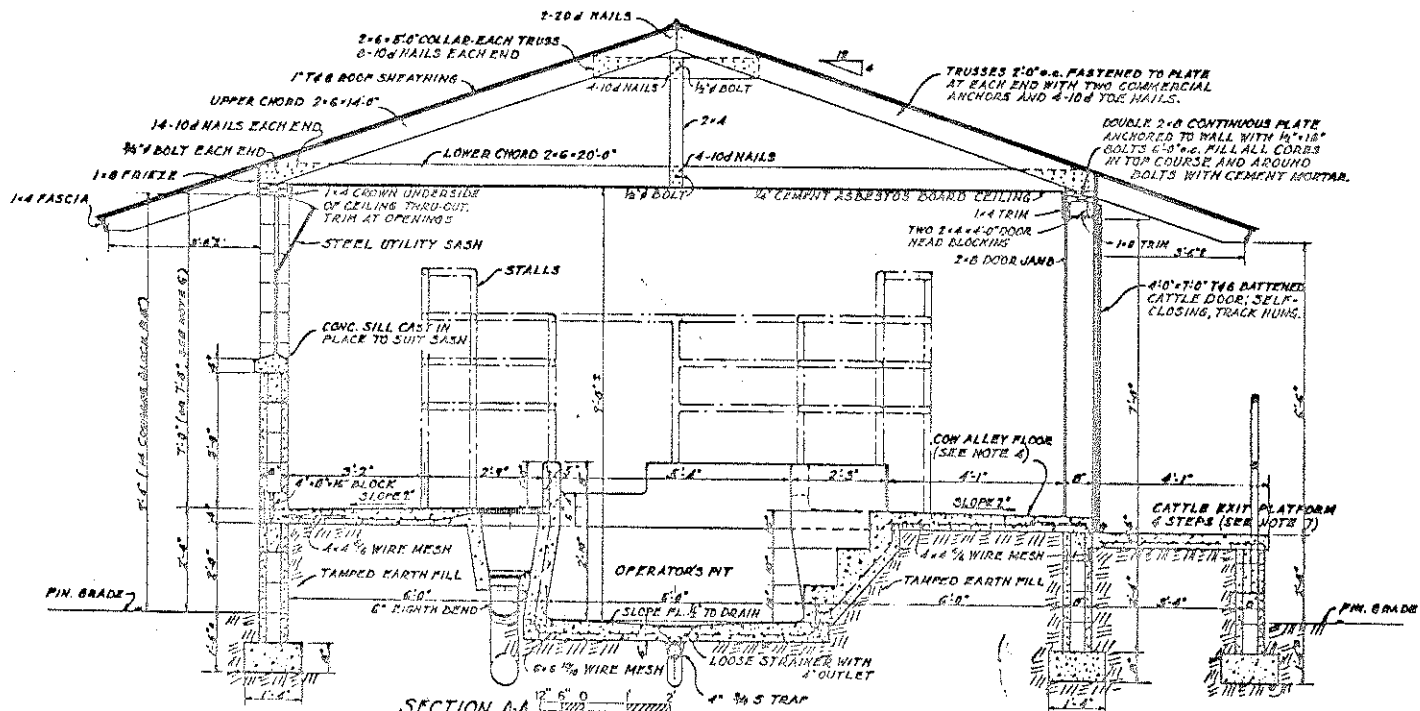
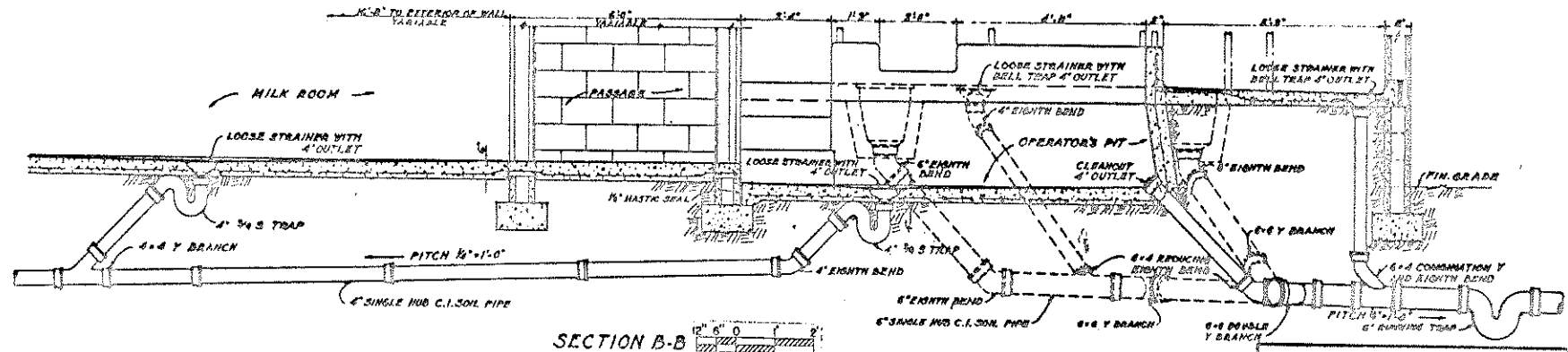


GENERAL NOTES:

1. CONSULT LOCAL HEALTH AUTHORITIES BEFORE STARTING CONSTRUCTION TO BE SURE THAT PLAN CONFORMS WITH LOCAL REGULATIONS.
2. VARIABLE DIMENSIONS MARKED WITH #, MINIMUM RECOMMENDED DEPTH SHOWN, CARRY FOUNDATION TO SOLID GROUND OR LOW FROST.
3. FILL TOP BLOCK COURSE WITH CEMENT-MORTAR UNDER FLOOR SLABS BEARING ON MASONRY WALL. 1/2" GALVANIZED HARDWARE CLOTH MORTAR STOP IN JOINT BELOW FIRST COURSE.
4. CONCRETE FLOORS USED BY CATTLE TO HAVE AN UNTROWELED SURFACE.
5. INSTALL FLOOR DRAINS FLUSH WITH OR SLIGHTLY BELOW FLOOR SURFACE, PROVIDED WITH TRAP WHERE SMOOTH AND CONNECT WITH DRAIN AS REQUIRED BY LOCAL SANITARY CODES.
6. WHERE LOCAL REGULATIONS REQUIRE 8'-0" CEILING HEIGHT ABOVE COW ALLEY FLOOR, ADD ONE BLOCK COURSE MORE THAN SHOWN AND RAISE WINDOW SILLS TO SUIT.
7. CATTLE EXIT PLATFORM AND STEPS: 4" CONCRETE SLAB REINFORCED WITH 4" x 4" WIRE MESH; SURFACE BROOMED AND LATERALLY SCORED AT 6" CENTERED SIDE ENTRANCE, EXIT OR STRAIGHT IN AND OUT STEPS OPTIMAL LENGTH AND DIRECTION DEPENDENT UPON LOCAL CONDITIONS.
8. FINISH EXTERIOR SURFACE OF BLOCK WALL WITH 2 COATS OF CEMENT PAINT ABOVE FINISH GRADE; PARGE WITH 1/2" CEMENT MORTAR BELOW FINISH GRADE.



SECTION A-A



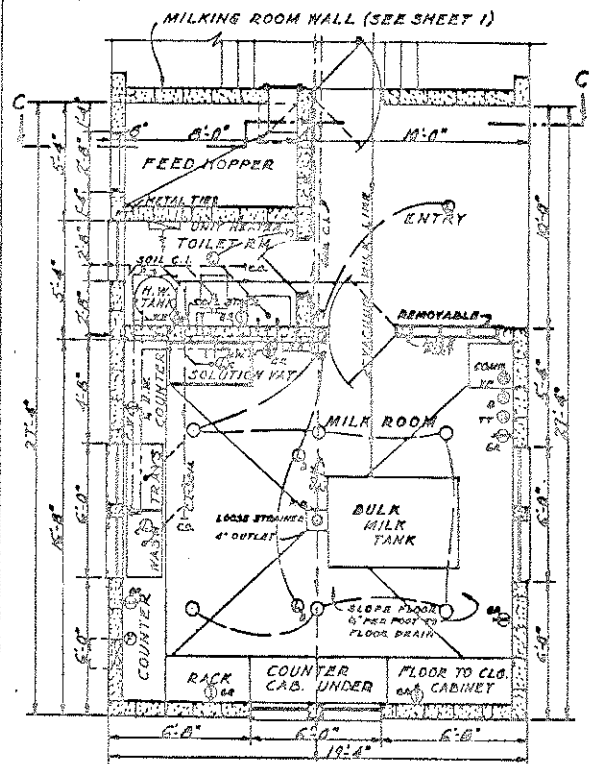
SECTION B-B

COOPERATIVE EXTENSION WORK IN
AGRICULTURE AND HOME ECONOMICS

AND
UNITED STATES DEPARTMENT OF AGRICULTURE COOPERATING

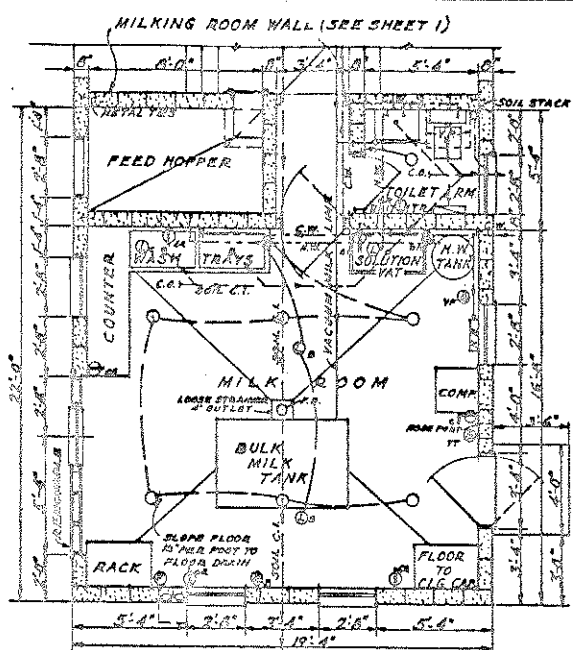
MILKING PLANT
U. TYPE

USDA 89 EX. 5736 SHEET 2 OF 3



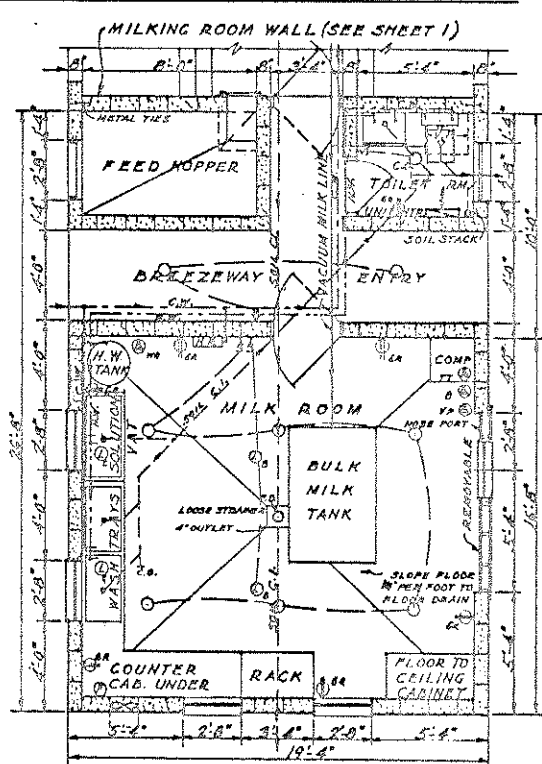
MILK ROOM PLAN NO. 1

NOTE: C.W. - COLD WATER
H.W. - HOT WATER
H.R. - HOSE RACK
F.D. - FLOOR DRAIN
C.C. - CLEAN OUT



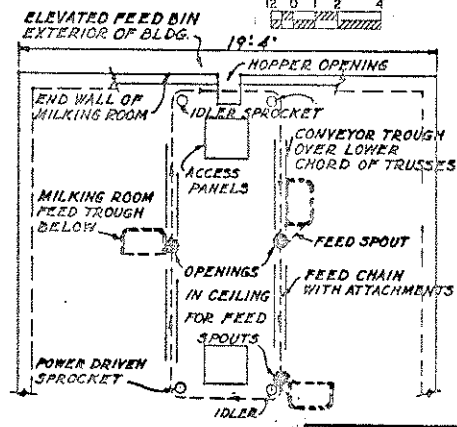
MILK ROOM PLAN NO. 2

NOTE: NOSE PORTS 16" ABOVE FLOOR TO FIT LOCAL LAYOUT.

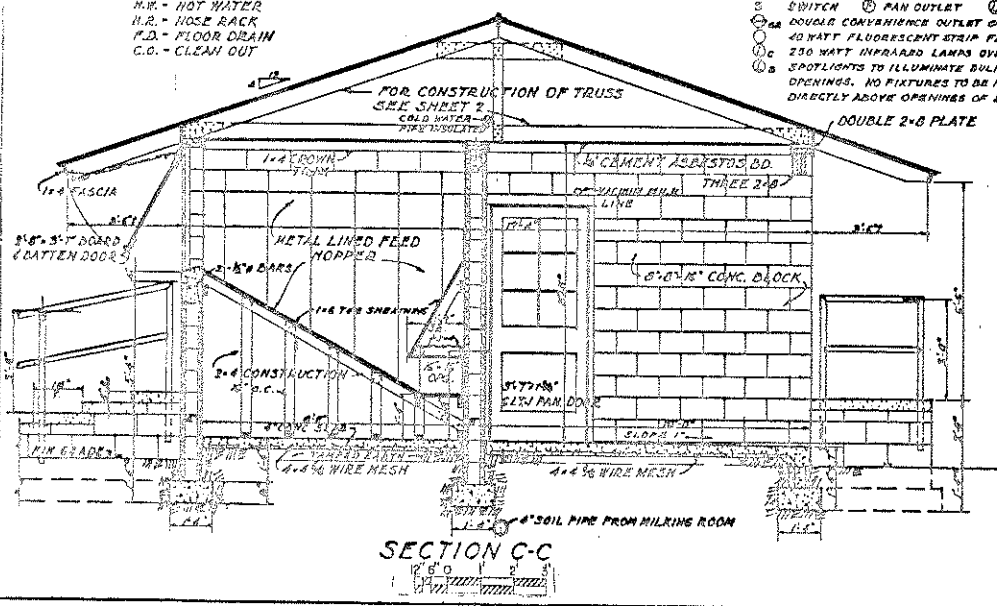


MILK ROOM PLAN NO. 3

- ELECTRICAL SYMBOLS**
- ⊕ MILK VACUUM PUMP - 220 VOLT, 3 P, 30 AMP FUSED SWITCH
 - ⊕ MILK TANK - 220 VOLT, 3 P, 30 AMP FUSED SWITCH
 - ⊕ TANK TRUCK - 220 VOLT
 - ⊕ WASTE HEATER - 220 VOLT, 3 P, 30 AMP FUSED SWITCH
 - ⊕ SWITCH
 - ⊕ PAN OUTLET
 - ⊕ LAMP
 - ⊕ DOUBLE CONVENIENCE OUTLET GROUND
 - ⊕ 40 WATT FLUORESCENT STRIP FIXTURE
 - ⊕ 250 WATT INFRARED LAMPS OVER WARM AREA
 - ⊕ SPOTLIGHTS TO ILLUMINATE BULK MILK TANK OPENINGS. NO FIXTURES TO BE MOUNTED DIRECTLY ABOVE OPENINGS OF BULK TANK.



ALTERNATE FEED SYSTEM MECHANICAL FEEDER OVER CEILING OF 3 STALL MILKING ROOM



SECTION C-C

COOPERATIVE EXTENSION WORK IN AGRICULTURE AND HOME ECONOMICS

AND UNITED STATES DEPARTMENT OF AGRICULTURE COOPERATING

MILKING PLANT

USDA 59 EX. 5736 SHEET 3 OF 3