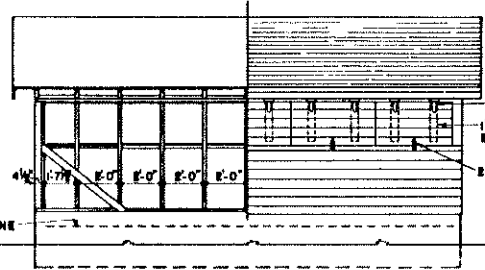
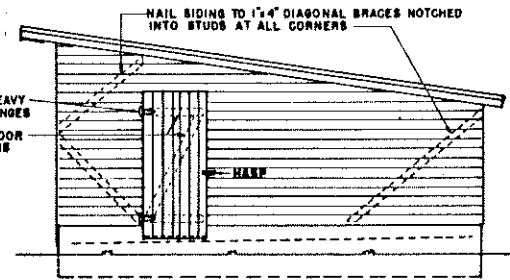


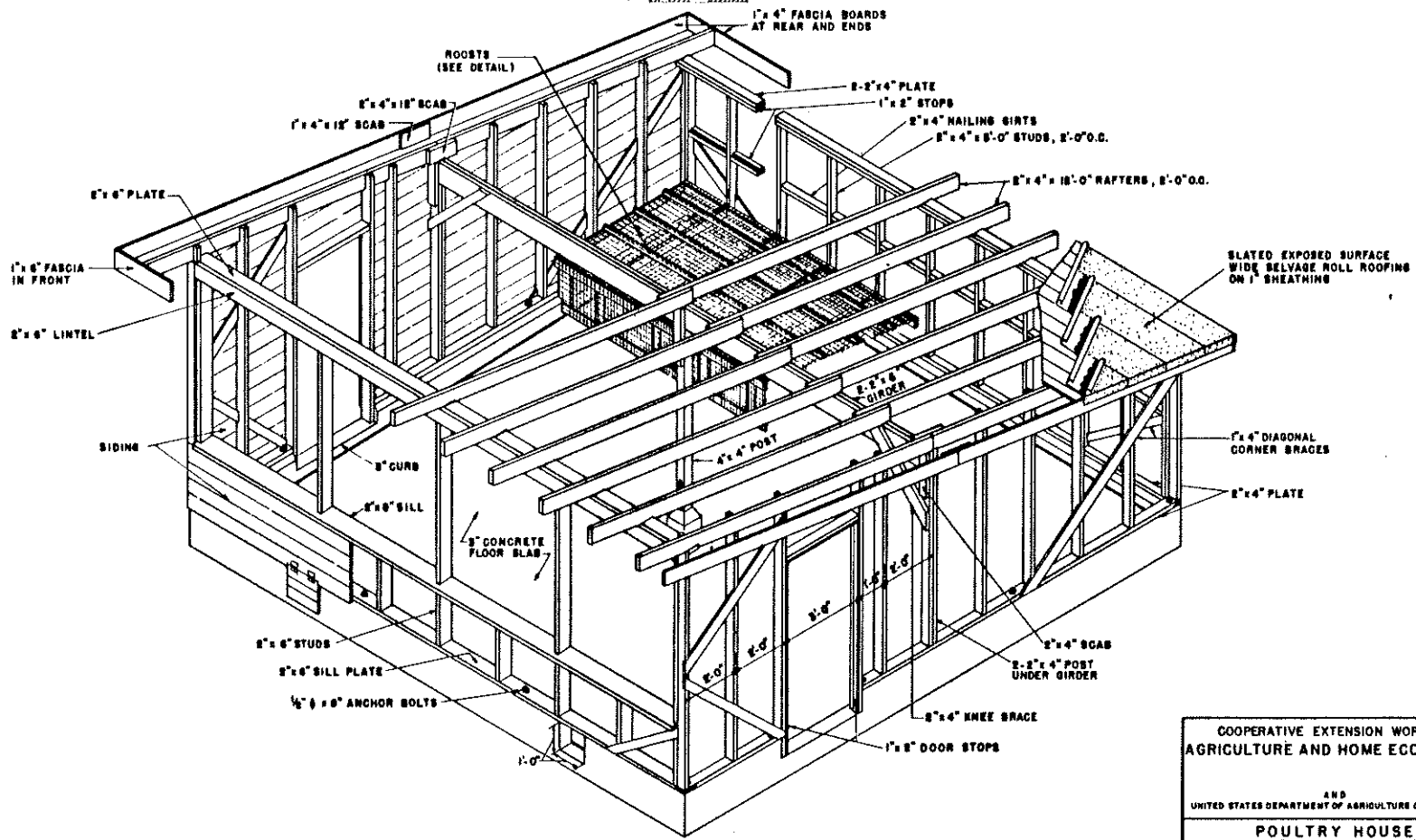
FRONT ELEVATION



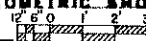
REAR ELEVATION



END ELEVATION

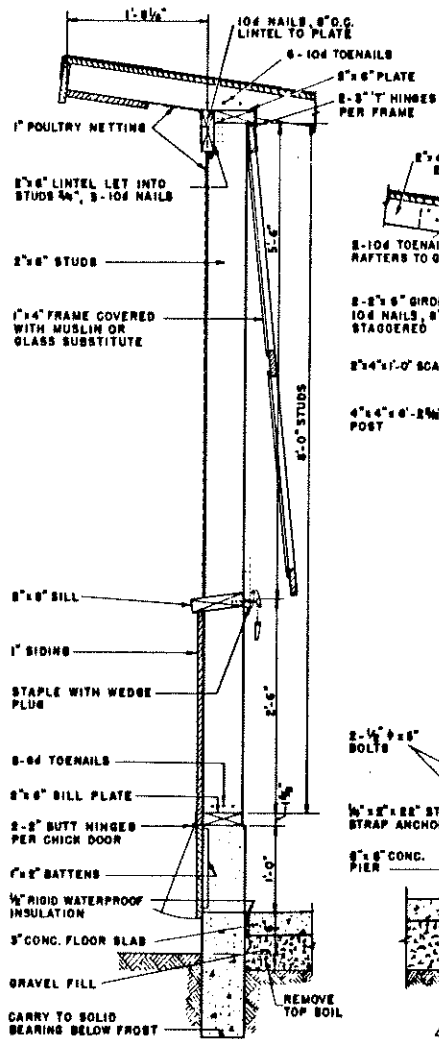


CUT-AWAY ISOMETRIC SHOWING CONSTRUCTION

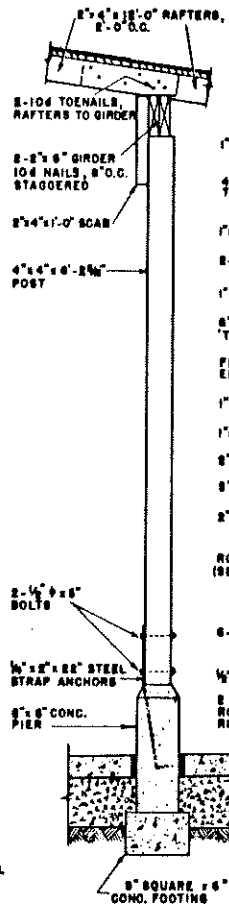


COOPERATIVE EXTENSION WORK IN AGRICULTURE AND HOME ECONOMICS			
AND UNITED STATES DEPARTMENT OF AGRICULTURE COOPERATING			
POULTRY HOUSE		20' x 20'	
100 HEN UNIT			
USDA	'51	EX. 5731	SHEET 1 OF 1

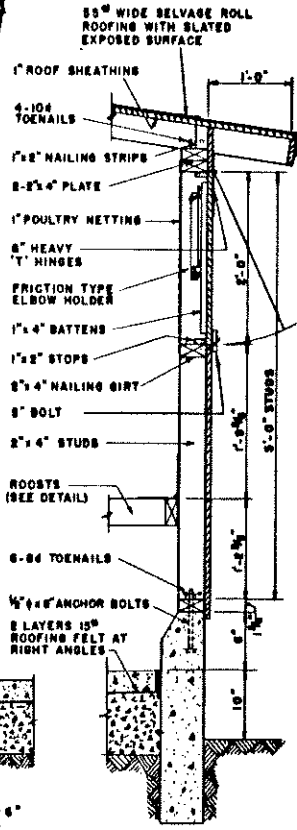
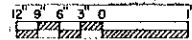
POULTRY



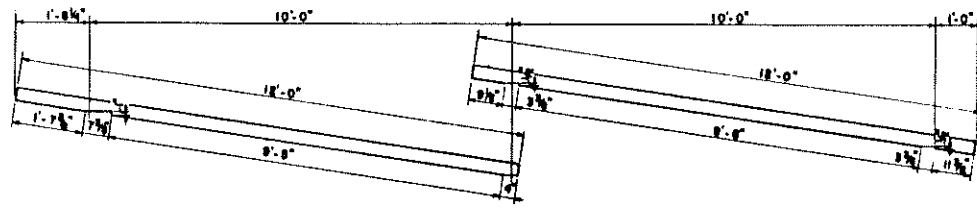
FRONT WALL SECTION



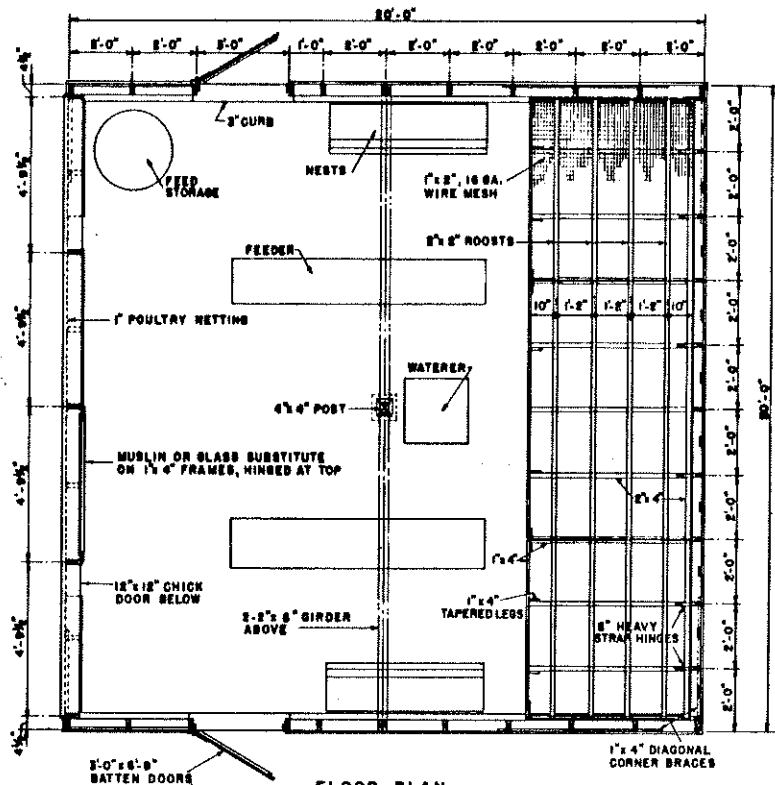
DETAIL AT POST



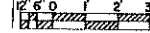
REAR WALL SECTION



DETAIL SHOWING RAFTER CUTS

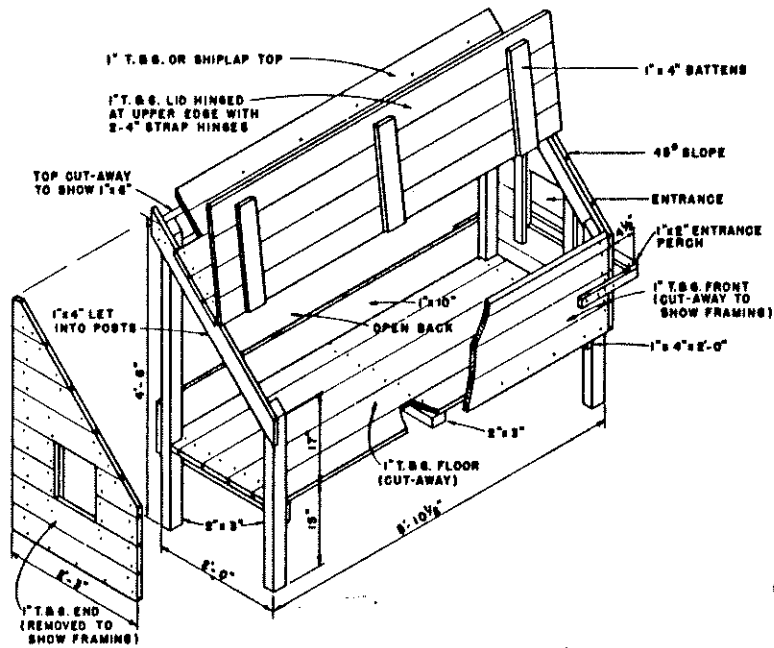


FLOOR PLAN

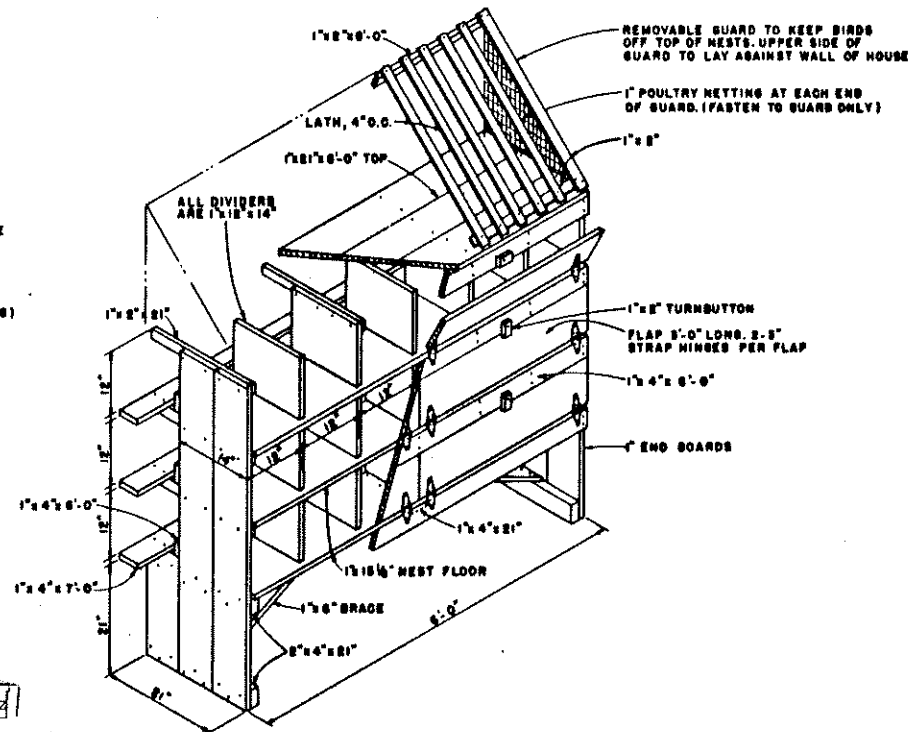
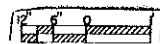


COOPERATIVE EXTENSION WORK IN AGRICULTURE AND HOME ECONOMICS			
AND			
UNITED STATES DEPARTMENT OF AGRICULTURE COOPERATING			
POULTRY HOUSE			
100 HEN UNIT		20' x 20'	
USDA	'81	EX. 5731	SHEET 2 OF 3

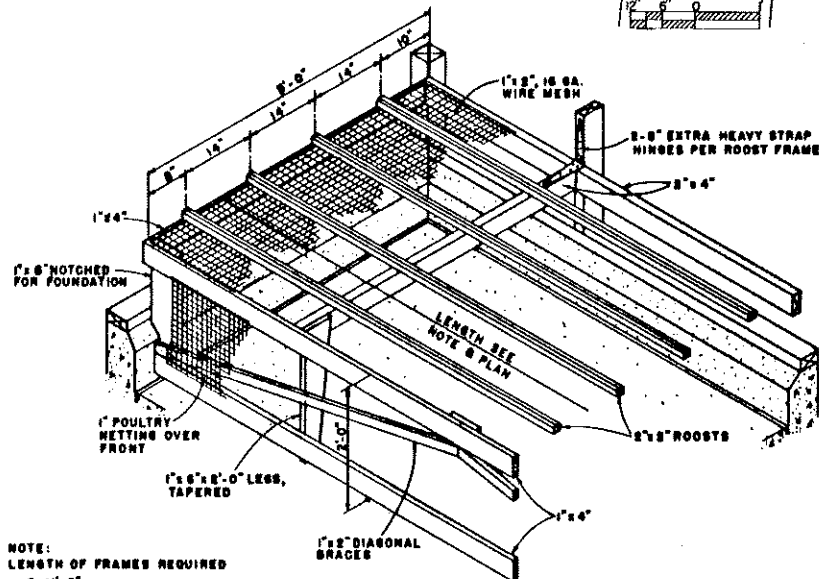
POULTRY



COMMUNITY NEST DETAILS
 (CAPACITY 80 TO 90 BIRDS FOR LENGTH SHOWN)



INDIVIDUAL NEST DETAILS
 (CAPACITY 90 TO 100 BIRDS FOR LENGTH SHOWN)



NOTE:
 LENGTH OF FRAMES REQUIRED
 8-11'-8"
 1-12'-0"
 LENGTH OF PERCH PER BIRD - 8 1/4"

ROOST DETAIL

COOPERATIVE EXTENSION WORK IN AGRICULTURE AND HOME ECONOMICS			
AND UNITED STATES DEPARTMENT OF AGRICULTURE COOPERATING			
POULTRY HOUSE EQUIPMENT			
USDA	'81	EX. 5731	SHEET 2 OF 5

POULTRY