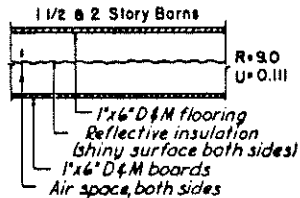
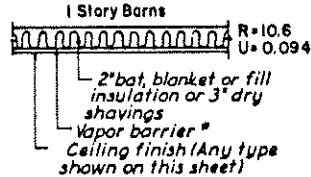


SUGGESTED CEILING SECTIONS

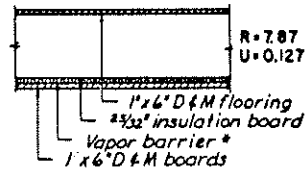


R=9.0
U=0.111

Cold areas of ZONE 1 (Large or small barns)

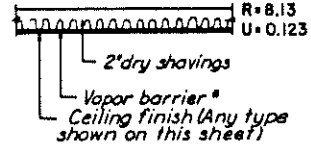


R=10.6
U=0.094

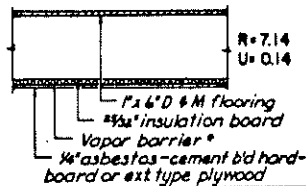


R=7.87
U=0.127

Average areas of ZONE 1 (Large or small barns)

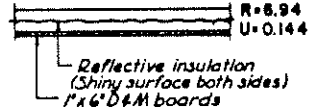


R=8.13
U=0.123

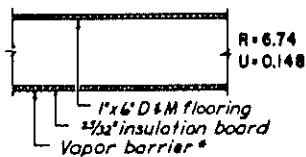


R=7.14
U=0.14

Warm areas of ZONE 1 (Large or small barns)
Cold areas of ZONE 2 (Large or small barns)

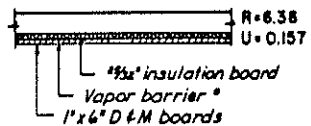


R=8.94
U=0.144

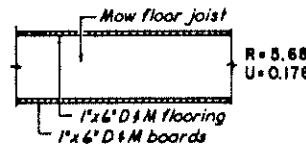


R=6.74
U=0.148

Average areas of ZONE 2 (Large or small barns)

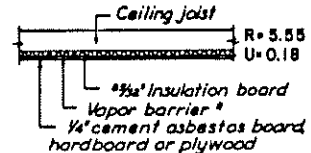


R=6.38
U=0.157



R=5.68
U=0.176

Warm areas of ZONE 2 (Large or small barns)

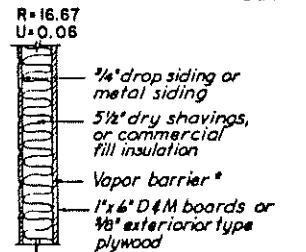


R=5.55
U=0.18

* Vapor barriers shall be either shiny-surfaced building paper infused with asphalt, or metal foil. When insulation board is used as inside finish, the vapor barrier shall be two coats of asphalt base aluminum-flake paint applied to the inside surface of the board.

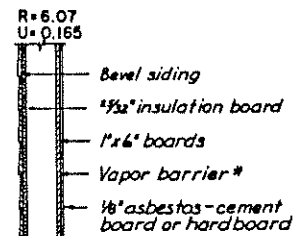
NOTE: These wall and ceiling sections show types of construction suitable for the temperature zones shown on the map at right. In most cases the insulating value is minimum for the part of zone indicated.

SUGGESTED WALL SECTIONS



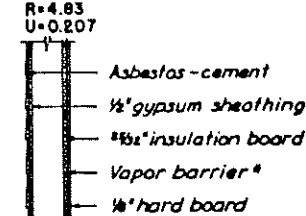
R=16.67
U=0.06

Cold areas of ZONE 1 (Large or small barns)



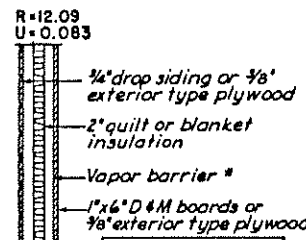
R=6.07
U=0.165

Cold areas of ZONE 1 (Large barns)
Warm areas of ZONE 1 (Small barns)
Cold areas of ZONE 2 (Large, Small)



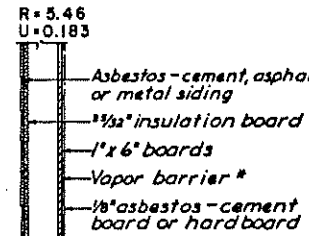
R=4.83
U=0.207

Warm areas of ZONE 1 (Large barns)
Average areas of ZONE 2 (Large barns)
Warm areas of ZONE 2 (Large, Small)



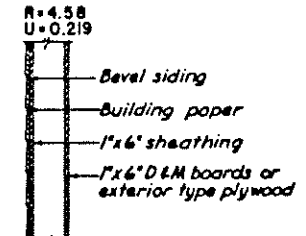
R=12.09
U=0.083

Cold areas of ZONE 1 (Large or small barns)



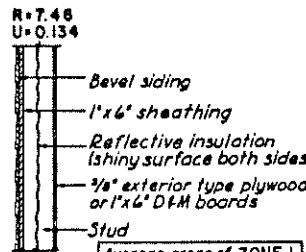
R=5.46
U=0.183

Average areas of ZONE 1 (Large barns)
Cold areas of ZONE 2 (Large barns)
Average areas of ZONE 2 (Small barns)



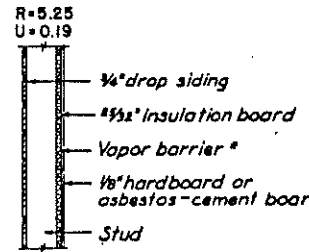
R=4.58
U=0.219

Warm areas of ZONE 1 (Large barns)
Average areas of ZONE 2 (Large barns)
Warm areas of ZONE 2 (Large, Small)



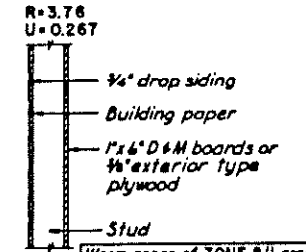
R=7.48
U=0.134

Average areas of ZONE 1 (Large or small barns)



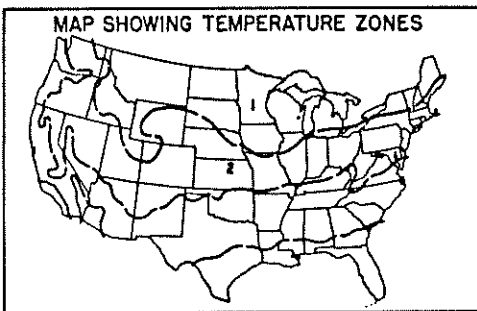
R=5.25
U=0.19

Average areas of ZONE 1 (Large barns)
Cold areas of ZONE 2 (Large barns)
Average areas of ZONE 2 (Small barns)



R=3.76
U=0.267

Warm areas of ZONE 2 (Large barns)



COOPERATIVE EXTENSION WORK IN AGRICULTURE AND HOME ECONOMICS

UNITED STATES DEPARTMENT OF AGRICULTURE COOPERATIVE

BARN WALL AND CEILING SECTIONS FRAME CONSTRUCTION

USDA '48 EX. 5668 SHEET 1 OF 1