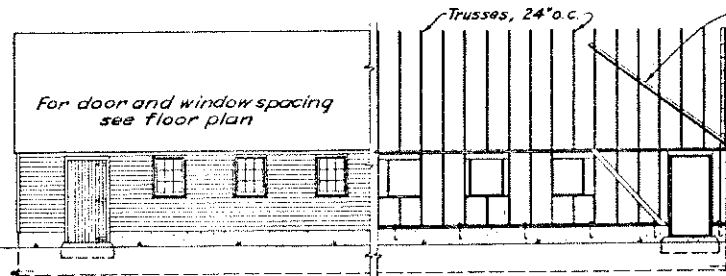
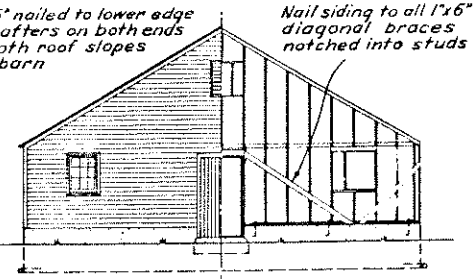


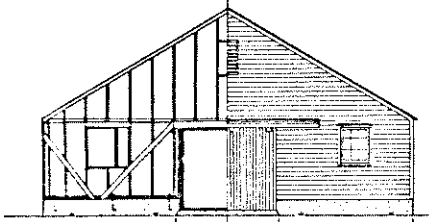
1/2 END FRAMING 1/2 END ELEVATION
36 FOOT BARN - FACE OUT



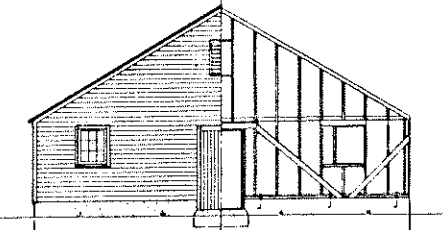
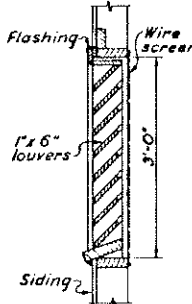
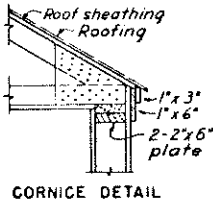
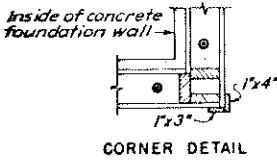
PART SIDE ELEVATION PART SIDE FRAMING



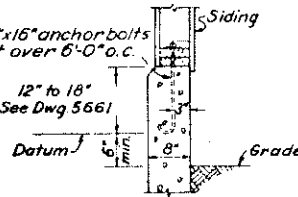
1/2 END ELEVATION 1/2 END FRAMING
36 FOOT BARN - FACE IN



1/2 END FRAMING 1/2 END ELEVATION
34 FOOT BARN - FACE OUT



1/2 END ELEVATION 1/2 END FRAMING
34 FOOT BARN - FACE IN

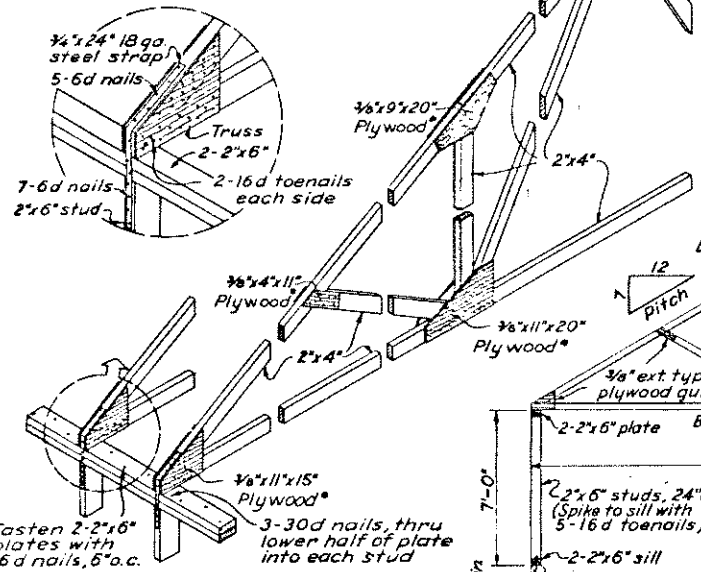


FOUNDATION DETAIL

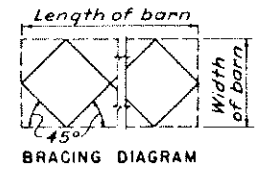
MATERIAL FOR ONE ROOF TRUSS 34 OR 36 FOOT WIDTH	
Rafters	3 - 2"x4"x14'
Ties	3 - 2"x4"x12'
Inner braces	2 - 2"x4"x12'
Outer braces	1 - 2"x4"x14'
Vertical struts	1 - 2"x4"x14'
Gussets	Approx. 18 sq ft 3/8" plywood
Nails	6d, 2.8 lbs.

* NOTE: Plywood for gussets to be exterior type. Gussets to be cut so that grain of outside face runs in direction indicated.

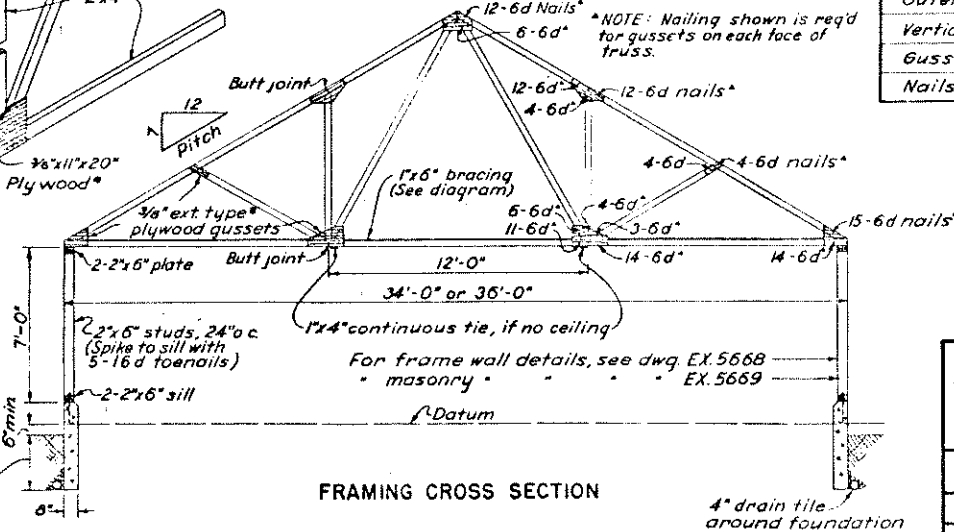
* NOTE: Nailing shown is req'd for gussets on each face of truss.



ISOMETRIC DETAIL OF TRUSS



BRACING DIAGRAM



FRAMING CROSS SECTION

COOPERATIVE EXTENSION WORK IN
AGRICULTURE AND HOME ECONOMICS
OREGON STATE COLLEGE
AND
UNITED STATES DEPARTMENT OF AGRICULTURE COOPERATING

GABLE ROOF BARN FRAMING
34 FOOT OR 36 FOOT WIDTH

USDA '48 **565B** SHEET 1 OF 1