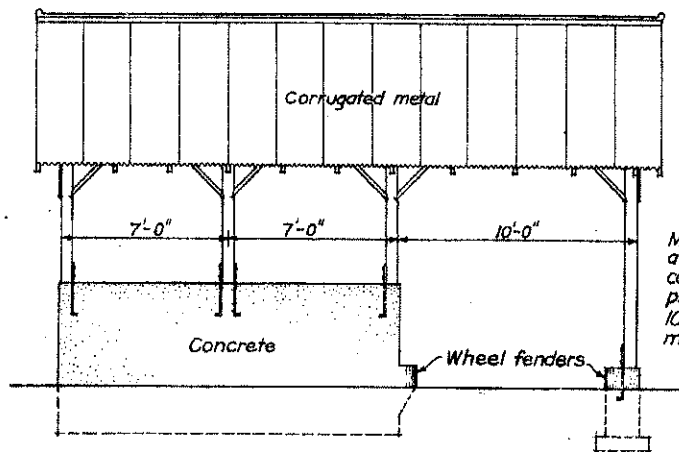
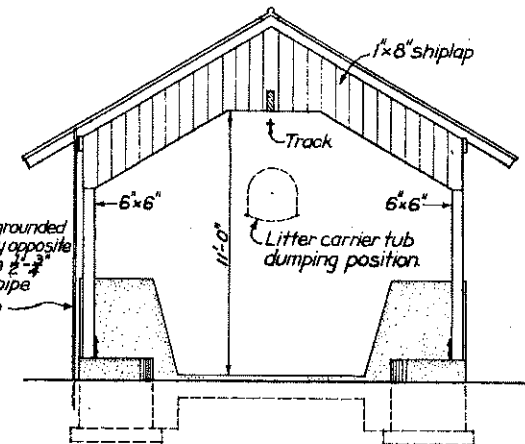


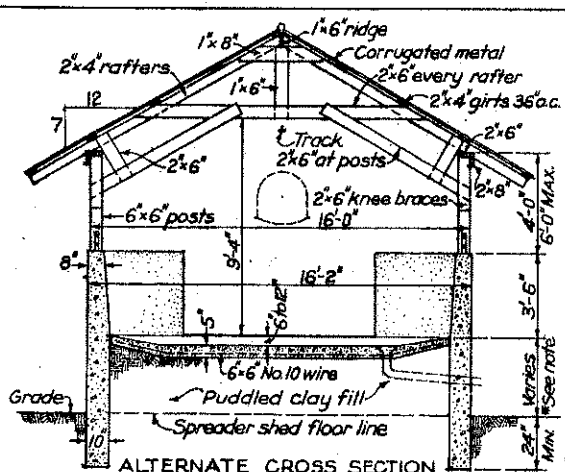
END ELEVATION



SIDE ELEVATION



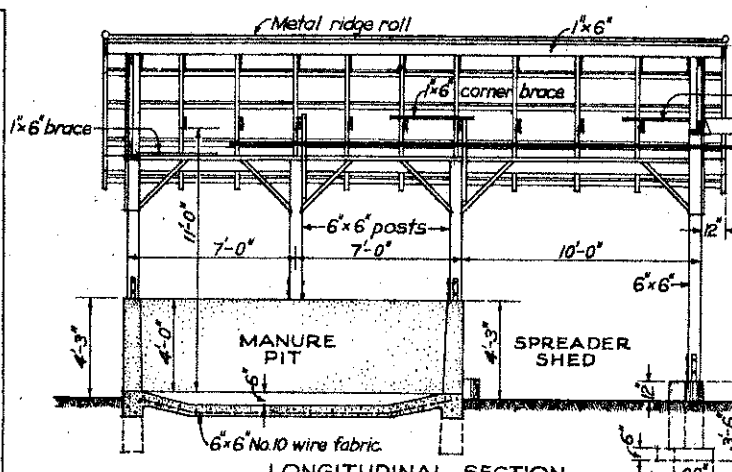
END ELEVATION



ALTERNATE CROSS SECTION

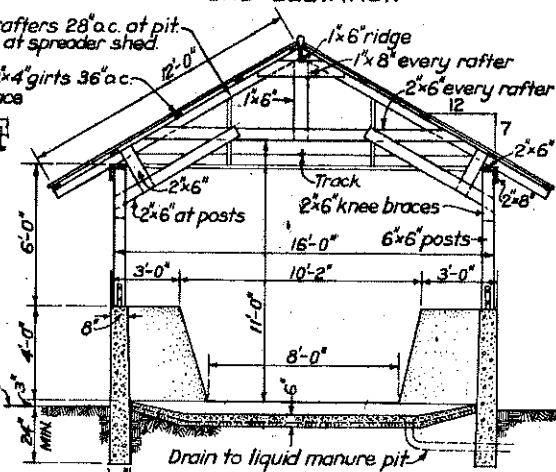
FOR HAND LOADING—Floor of pit raised to facilitate loading into manure spreader.

\*Vary height of pit floor to suit height of spreader



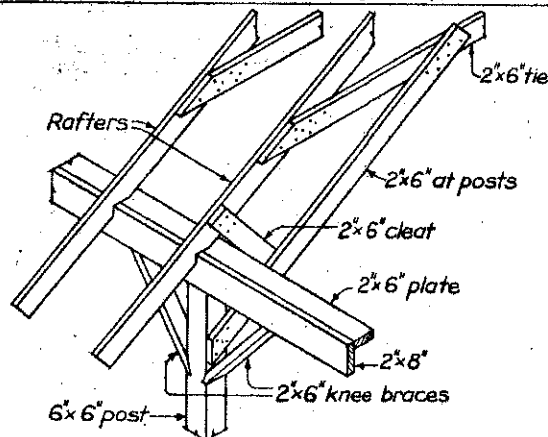
LONGITUDINAL SECTION

Drain to liquid manure pit or tank where needed

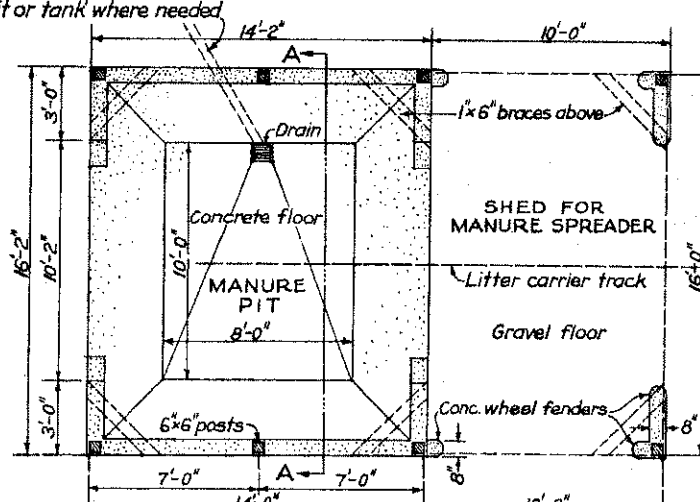


SECTION A-A

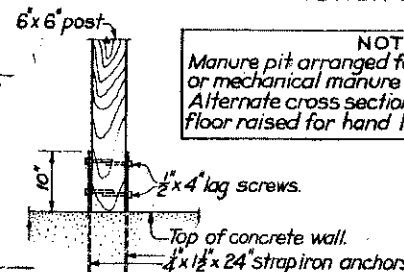
NOTE  
Manure pit arranged for either, hand loading or mechanical manure loader.  
Alternate cross section is shown with pit floor raised for hand loading into spreader.



FRAMING AT POSTS



PLAN  
Scale 1/4" = 1'-0"



POST ANCHOR

Pit capacity sufficient for the manure produced by 20 cows in 30 days.

COOPERATIVE EXTENSION WORK IN  
AGRICULTURE AND HOME ECONOMICS  
STATE OF NORTH DAKOTA  
NORTH DAKOTA STATE UNIVERSITY  
OF AGRICULTURE AND APPLIED SCIENCE  
UNITED STATES DEPARTMENT OF AGRICULTURE COOPERATING

MANURE PIT

USDA '47 EX. 5636 SHEET 1 OF 1