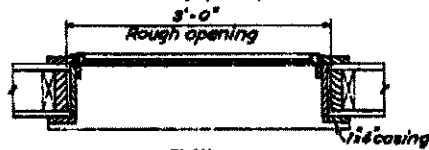


EXTERIOR ELEVATION

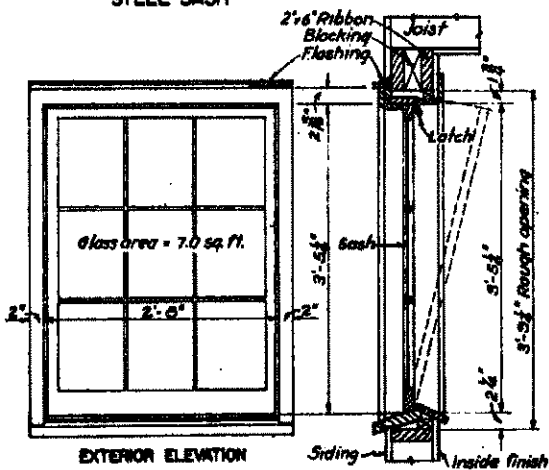
CROSS SECTION

Note: steel sash size is approximate. Steel sash vary in size and shape depending on manufacturer. Determine actual size of sash before framing openings.



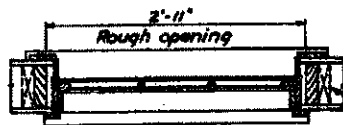
PLAN

STEEL SASH



EXTERIOR ELEVATION

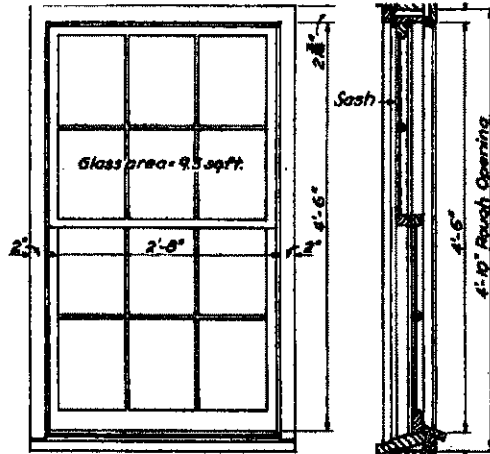
CROSS SECTION



PLAN

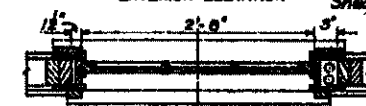
TILTING SASH  
(STOCK FRAME)

Double studs where shown on framing detail sheets.



EXTERIOR ELEVATION

CROSS SECTION



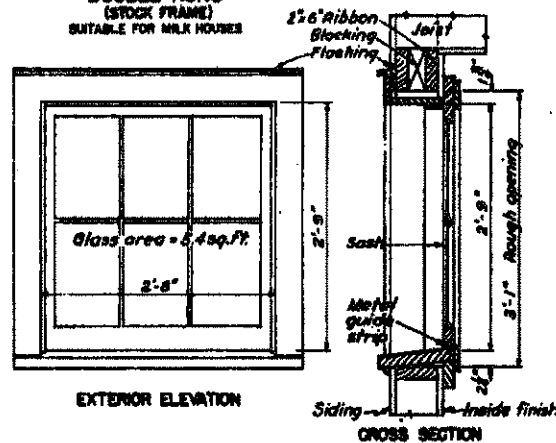
HALF PLAN  
FRAME WITHOUT WEIGHTS

HALF PLAN  
FRAME WITH WEIGHTS

DOUBLE HUNG

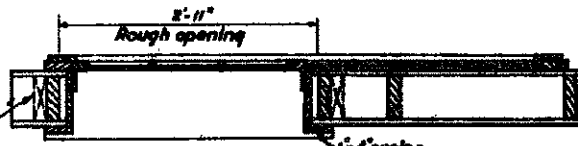
(STOCK FRAME)

SUITABLE FOR MILK HOUSES



EXTERIOR ELEVATION

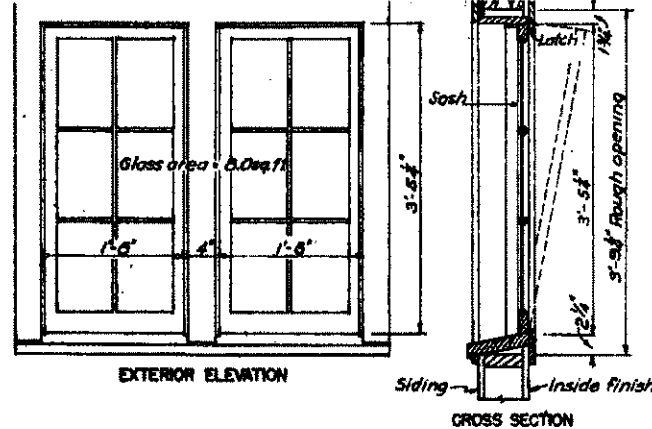
CROSS SECTION



PLAN

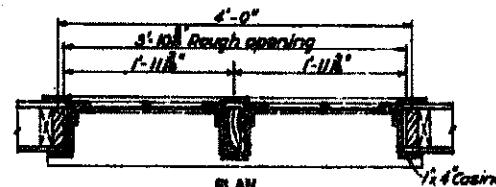
SLIDING SASH  
(PLANK FRAME)

SCALE 1" = 1'-0"



EXTERIOR ELEVATION

CROSS SECTION



PLAN

MULLION WINDOWS - TILTING SASH  
(PLANK FRAME)

| STANDARD WOOD BARN SASH OPENING SIZES* |            |        |            |        |            |        |            |        |            |        |            |
|--|------------|--------|------------|--------|------------|--------|------------|--------|------------|--------|------------|
| A                                      |            | B      |            | A      |            | B      |            | A      |            | B      |            |
| A                                      | B          | A      | B          | A      | B          | A      | B          | A      | B          | A      | B          |
| 2'-0"                                  | 2'-2 1/2"  | 2'-0"  | 2'-2 1/2"  | 2'-0"  | 2'-2 1/2"  | 2'-0"  | 2'-2 1/2"  | 2'-0"  | 2'-2 1/2"  | 2'-0"  | 2'-2 1/2"  |
| 2'-4"                                  | 2'-11 1/2" | 2'-4"  | 2'-11 1/2" | 2'-4"  | 2'-11 1/2" | 2'-4"  | 2'-11 1/2" | 2'-4"  | 2'-11 1/2" | 2'-4"  | 2'-11 1/2" |
| 2'-8"                                  | 2'-7"      | 2'-8"  | 2'-7"      | 2'-8"  | 2'-7"      | 2'-8"  | 2'-7"      | 2'-8"  | 2'-7"      | 2'-8"  | 2'-7"      |
| 2'-12"                                 | 2'-3 1/2"  | 2'-12" | 2'-3 1/2"  | 2'-12" | 2'-3 1/2"  | 2'-12" | 2'-3 1/2"  | 2'-12" | 2'-3 1/2"  | 2'-12" | 2'-3 1/2"  |
| 2'-0"                                  | 2'-2 1/2"  | 2'-0"  | 2'-2 1/2"  | 2'-0"  | 2'-2 1/2"  | 2'-0"  | 2'-2 1/2"  | 2'-0"  | 2'-2 1/2"  | 2'-0"  | 2'-2 1/2"  |
| 2'-4"                                  | 2'-11 1/2" | 2'-4"  | 2'-11 1/2" | 2'-4"  | 2'-11 1/2" | 2'-4"  | 2'-11 1/2" | 2'-4"  | 2'-11 1/2" | 2'-4"  | 2'-11 1/2" |
| 2'-8"                                  | 2'-7"      | 2'-8"  | 2'-7"      | 2'-8"  | 2'-7"      | 2'-8"  | 2'-7"      | 2'-8"  | 2'-7"      | 2'-8"  | 2'-7"      |
| 2'-12"                                 | 2'-3 1/2"  | 2'-12" | 2'-3 1/2"  | 2'-12" | 2'-3 1/2"  | 2'-12" | 2'-3 1/2"  | 2'-12" | 2'-3 1/2"  | 2'-12" | 2'-3 1/2"  |
| 2'-0"                                  | 2'-2 1/2"  | 2'-0"  | 2'-2 1/2"  | 2'-0"  | 2'-2 1/2"  | 2'-0"  | 2'-2 1/2"  | 2'-0"  | 2'-2 1/2"  | 2'-0"  | 2'-2 1/2"  |
| 2'-4"                                  | 2'-11 1/2" | 2'-4"  | 2'-11 1/2" | 2'-4"  | 2'-11 1/2" | 2'-4"  | 2'-11 1/2" | 2'-4"  | 2'-11 1/2" | 2'-4"  | 2'-11 1/2" |
| 2'-8"                                  | 2'-7"      | 2'-8"  | 2'-7"      | 2'-8"  | 2'-7"      | 2'-8"  | 2'-7"      | 2'-8"  | 2'-7"      | 2'-8"  | 2'-7"      |
| 2'-12"                                 | 2'-3 1/2"  | 2'-12" | 2'-3 1/2"  | 2'-12" | 2'-3 1/2"  | 2'-12" | 2'-3 1/2"  | 2'-12" | 2'-3 1/2"  | 2'-12" | 2'-3 1/2"  |

\* BASED ON MODULAR STRIP AND STOCK WINDOWS AND SASH RECOMMENDED BY THE NATIONAL BARN MANUFACTURERS ASSOCIATION. FOR ADDITIONAL SIZES CONSULT LOCAL DEALER.

NOTES:

- Sash and frames to be clear pine.
- Sash and frames to be primed before installing.
- Sash and frames to be painted with two coats of lead and oil paint after installing.
- Before glazing prime all glass rabbets.

COOPERATIVE EXTENSION WORK IN AGRICULTURE AND HOME ECONOMICS  
STATE OF NORTH DAKOTA  
NORTH DAKOTA AGRICULTURAL COLLEGE  
AND  
UNITED STATES DEPARTMENT OF AGRICULTURE COOPERATING

**BARN WINDOW DETAILS**  
WOOD FRAME WALLS

U.S.D.A. '47 BUC 5633 SHEET 1 OF 1

51633