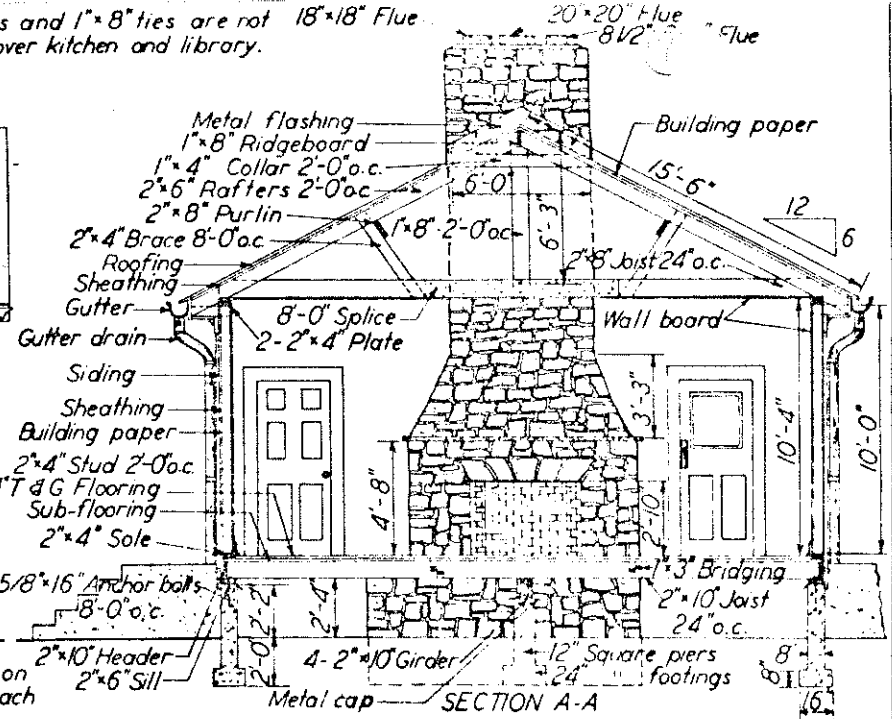
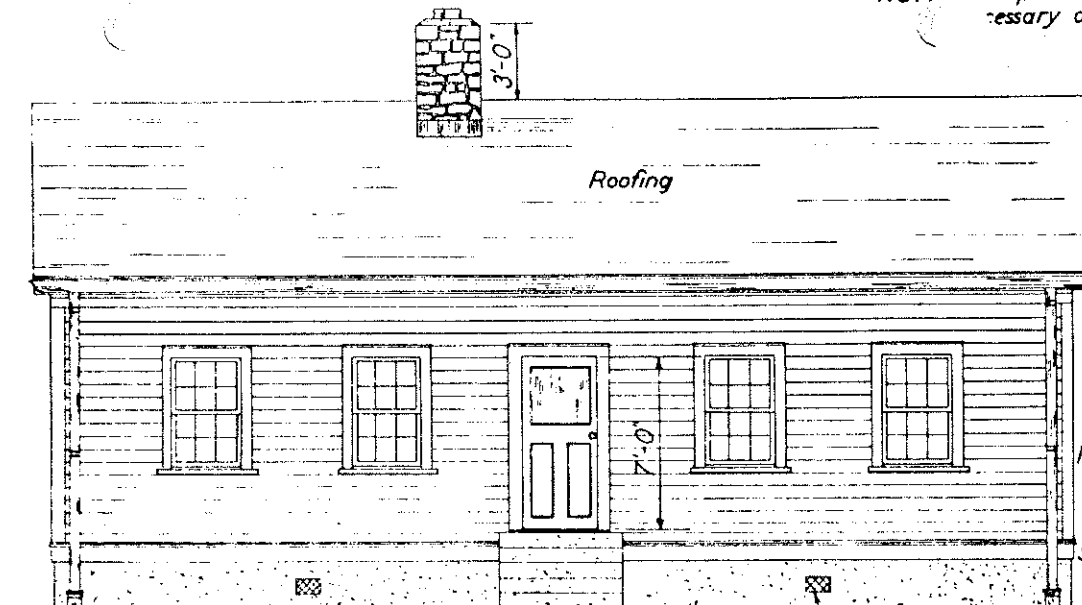
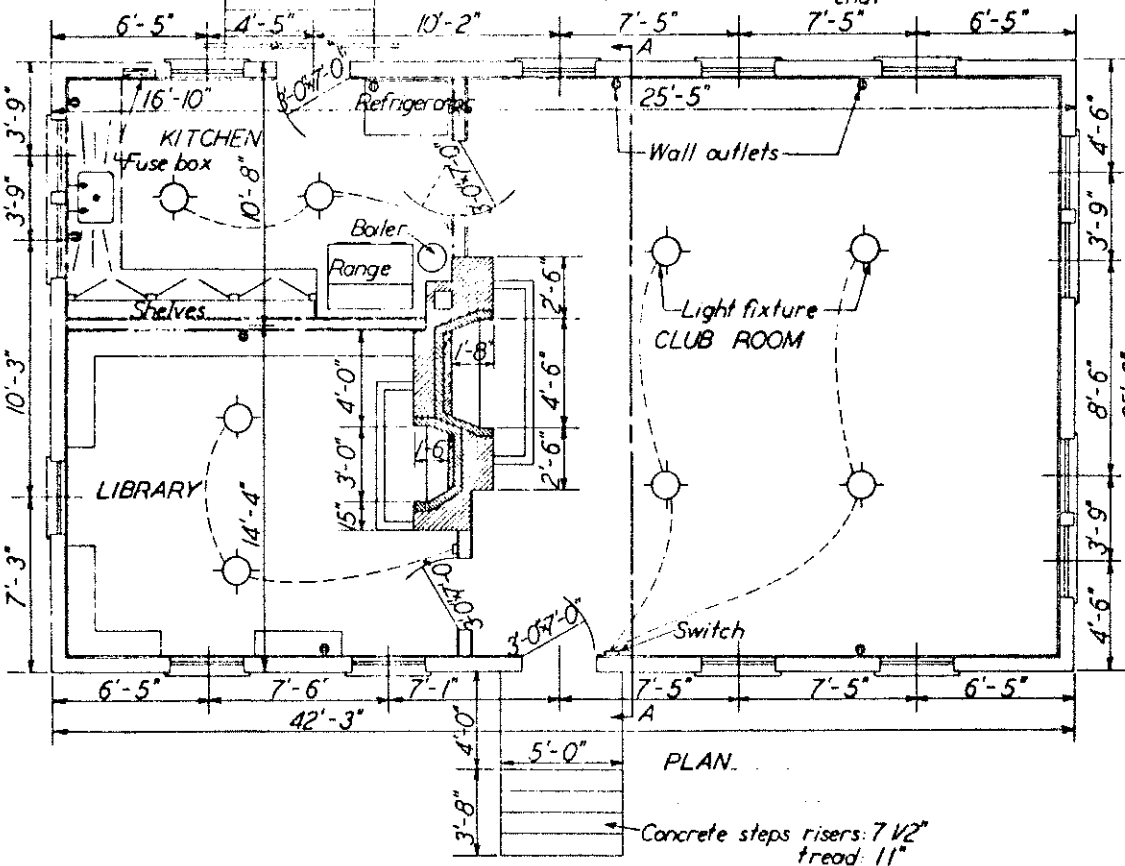


NOTE: 2"x8" purlins and 1"x8" ties are not necessary over kitchen and library.



ELEVATION. Steps same as shown in front. 8"x12" Ventilators. Two on each side and one in each end.



- Concrete: 1 2 1/2 : 4 Mix  
 Cement: 107 bags  
 Sand: 10.2 cu.yds.  
 Stone: 16.2 cu.yds.  
 Masonry:  
 Stone: 500 cu. ft.  
 Firebrick: 430  
 Mortar:  
 Cement: 20 bags  
 Sand: 2.5 cu.yds.  
 Lumber:  
 Sill: 12 pcs. 2"x6"x12'-0"  
 Header: 7 " 2"x10"x12'-0"  
 Girder: 8 " 2"x10"x12'-0"  
 8 " 2"x10"x8'-0"  
 Floor joist: 48 " 2"x10"x14'-0"  
 Sole: 14 " 2"x4"x12'-0"  
 Studs: 100 " 2"x4"x10'-0"  
 Window sill: 5 " 2"x8"x12'-0"  
 Plate: 28 " 2"x4"x12'-0"  
 Ceiling joist: 28 " 2"x8"x14'-0"  
 9 " 2"x8"x16'-0"  
 9 " 2"x8"x12'-0"  
 Splice: 13 " 1"x8"x16'-0"  
 Rafters: 48 " 2"x6"x16'-0"  
 Ridgeboard: 4 " 1"x8"x12'-0"  
 Collars: 11 " 1"x4"x12'-0"  
 Purlin: 4 " 2"x8"x14'-0"  
 Rafter brace: 6 " 2"x4"x10'-0"  
 Ties: 10 " 1"x8"x14'-0"  
 Box cornice material:  
 8 pcs. 2"x4"x12'-0"  
 20 " 1"x10"x12'-0"  
 90 lin. ft. trim  
 90 " " molding  
 Water table: 10 pcs. 1"x8"x14'-0"  
 Anchor bolts: 16 - 5/8"x16"

- BILL OF MATERIALS**  
 Corner & trim boards: 440 lin. ft. 1"x4"  
 Bridging: 170 " " 1"x3"  
 Base board: 170 " " 1 1/8"x6"  
 Quarter round: 340 " " 1"  
 Siding: 1400 sq. ft.  
 Sheathing: 2600 " "  
 Building paper: 2500 " "  
 Roofing: 14 squares  
 Wall board: 2700 sq. ft.  
 Windows: 15 double sash 10"x12" glass  
 Doors: 4 - 3'-0"x7'-0"  
**Hardware**  
 Gutters: 88'-0" - 5" diam.  
 Leaders: 50'-0" - 3" " 3/8 elbows  
 Flue lining: 14'-0" - 18" x 18" T.C.  
 14'-0" - 20" x 20" " "  
 14'-0" - 8 1/2" x 8 1/2" T.C.  
 Ventilators: 6 - 8"x12" Metal grate  
 Flashing, Door locks, Nails, Paint, etc.  
 Materials for kitchen and library equipment and electrical equipment not figured.