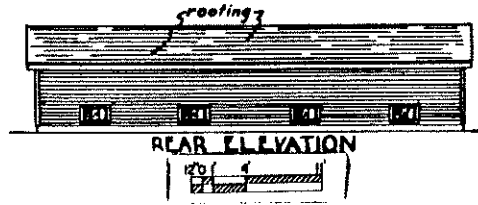
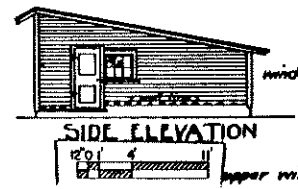


FLOOR PLAN

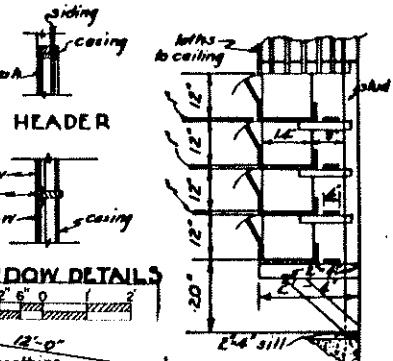


REAR ELEVATION

**NOTE**  
All windows are provided with 1" mesh wire screens with removable frames.



SIDE ELEVATION



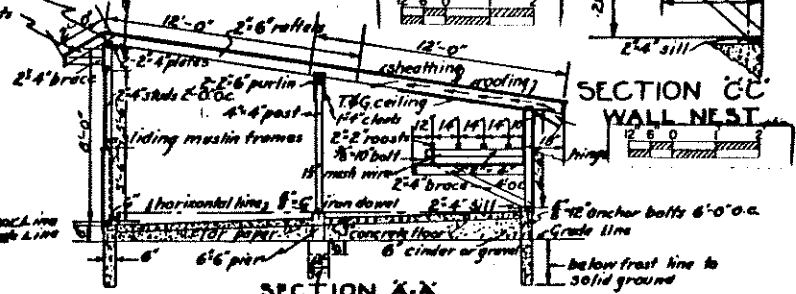
HEADER

space between rafters left open for ventilation, wire covered.

WINDOW DETAILS



FRONT ELEVATION



SECTION A-A

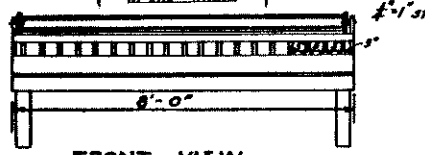
SECTION C-C WALL NEST

**BILL OF MATERIALS**

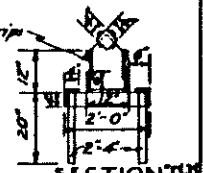
concrete:	1-2 1/2 cu. yds.	roofs:	16 pcs. 2x2x10'-0"
cement:	77 bags	dropboard joist:	14 " 2x4x12'-0"
sand:	75 cu. yds.	drop siding:	600 bd. ft.
stone:	115 cu. yds.	sheathing:	1200 bd. ft.
sills:	12 pcs. 2x4x10'-0"	roofing:	11 sq. ft.
sheds:	12 " 2x4x10'-0"	ceiling (T&G):	500 sq. ft.
"	34 " 2x4x8'-0"	partitions:	150 sq. ft.
"	4 " 2x4x12'-0"	drop boards:	260 sq. ft.
plates:	12 " 2x4x10'-0"	guides:	120 ft. ft.
post:	3 " 4x4x6'-0"	windows:	10 single sash, 8 ft. 10x12 glasses. 4 single sash, 3 ft. 8x10 glasses.
rafters:	42 " 2x6x12'-0"	doors:	2-3'-0"x6'-0"
lookouts:	3 " 2x4x14'-0"	anchor bolts:	20-3"x12"
braces:	11 " 2x4x10'-0"	iron dowels:	3-3"x6"
purlins:	6 " 2x6x10'-0"	hinges:	14-6"x7" hinges
headers:	6 " 2x4x10'-0"	"	24-4x4" full surface hinges
window sills:	2 " 2x4x12'-0"	"	4-2" double swing hinges
"	3 " 2x6x8'-0"	"	40 ft. 3/4" wire 1/2" mesh
door trim:	3 " 1x4x8'-0"	wire:	65 ft. 3/8" wire 1" mesh
window trim:	15 " 1x4x12'-0"	nails, paint, hardware, and etc.	
trim boards:	12 " 1x4x12'-0"	muslin:	22 ft. 3'-6" muslin
corner boards:	6 " 1x4x10'-0"		

NOTE

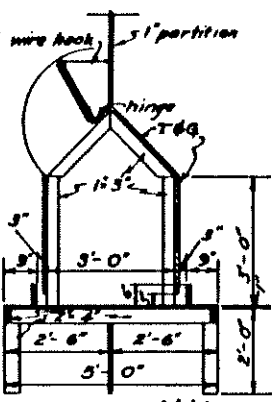
Materials for food hoppers, nest, and water stands not figured.



FRONT VIEW PORTABLE MASH HOPPER



SECTION D-D



SECTION B-B GRAIN & MASH STORAGE HOPPER

COOPERATIVE EXTENSION WORK IN AGRICULTURE AND HOME ECONOMICS

AND U.S. DEPT. OF AGRICULTURE COOPERATING.

**POULTRY HOUSE**

VA Ex 5580 Sheet No. 1