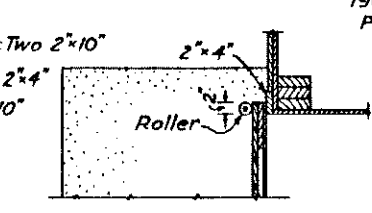
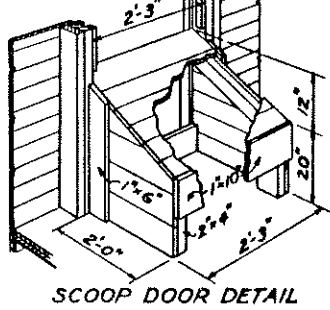


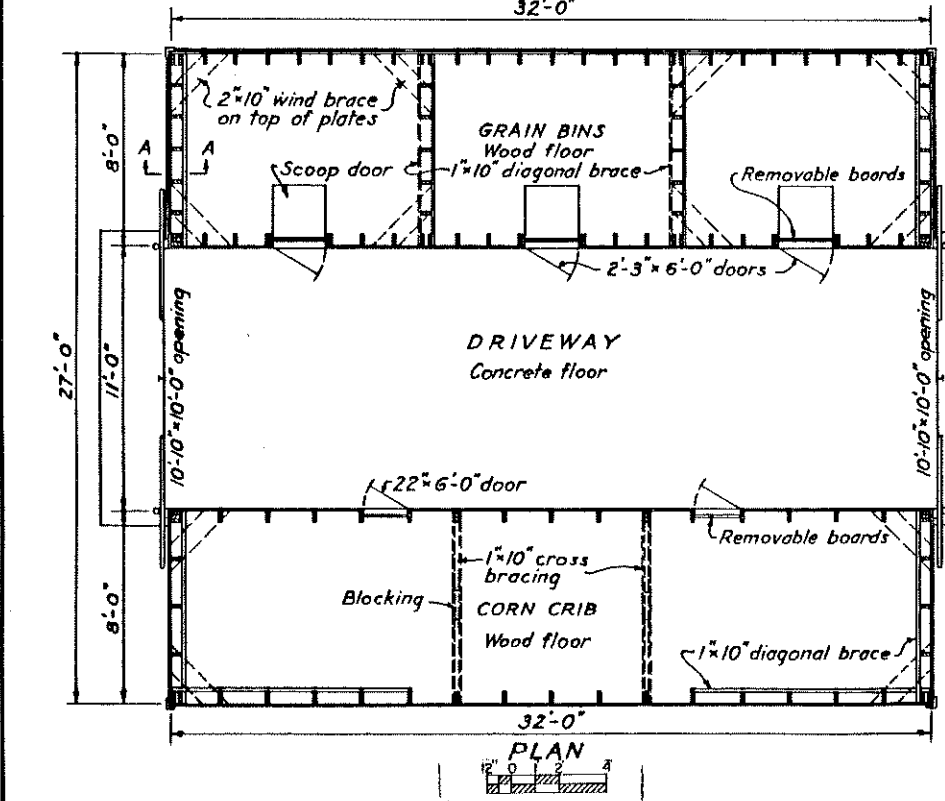
CAPACITY 1000 BU. EAR CORN  
2000 BU. GRAIN

- BILL OF MATERIALS (Wood Bin Floors only)**  
CONCRETE 1 : 2 1/2 : 5 MIX.  
12 1/2 bags cement, 12 cu. yds. sand, 23 cu. yds. gravel.  
29 - 2 1/2" x 10" x 8' joist.  
12 - 2" x 10" x 12' braces and door lintels.  
19 - 2" x 10" x 8' joist.  
8 - 2" x 8" x 16' sills.  
7 - 2" x 8" x 12' ties.  
32 - 2" x 6" x 16' plates.  
160 - 2" x 6" x 10' studs.  
38 - 2" x 4" x 18' rafters.  
60 - 2" x 4" x 12' girts and scoop doors.  
14 - 1" x 10" x 12' braces and door battens.  
11 - 1" x 8" x 12' door battens and collar ties.  
18 - 1" x 8" x 8' ties.  
960 lin. ft. 1" x 6" bevel cribbing.  
1700 lin. ft. 1" x 6" crib slats, crib floor & door battens.  
1000 ft. B.M. T.&G. shiplap sub-floor & sheathing.  
1500 ft. B.M. T.&G. flooring.  
1100 ft. B.M. drop siding.  
4 rolls (216 sq. ft. per roll) waterproof paper.  
14 - 1 1/2" x 4" x 12' trim.  
2 louvers 14" x 24" with frames and trim.  
34 sheets 26 ga. corrugated metal 7' long.  
68 " " " " " 6' "  
34 lin. ft. metal ridge roll.  
24 - 3/8" x 20" anchor bolts.  
190 lin. ft. metal 8" wide, 140 lin. ft. 12" wide.  
Paint, nails & door hardware not included.

**ALTERNATE FLOOR DETAIL**  
For stud anchors and stud sockets see Detail C.



Foundations to be carried below frost line, and to solid ground.



U.S. DEPARTMENT OF AGRICULTURE BUREAU OF AGRICULTURAL CHEMISTRY & ENGINEERING FARM STRUCTURES RESEARCH DIVISION		
<b>CRIB AND GRANARY</b>		
Scale: As shown	CHECKED	SHEET 1 of 1 SERIAL No. <b>5535</b>
Drawn by: G.L.E.		
Traced by: W.F.		
Approved:		