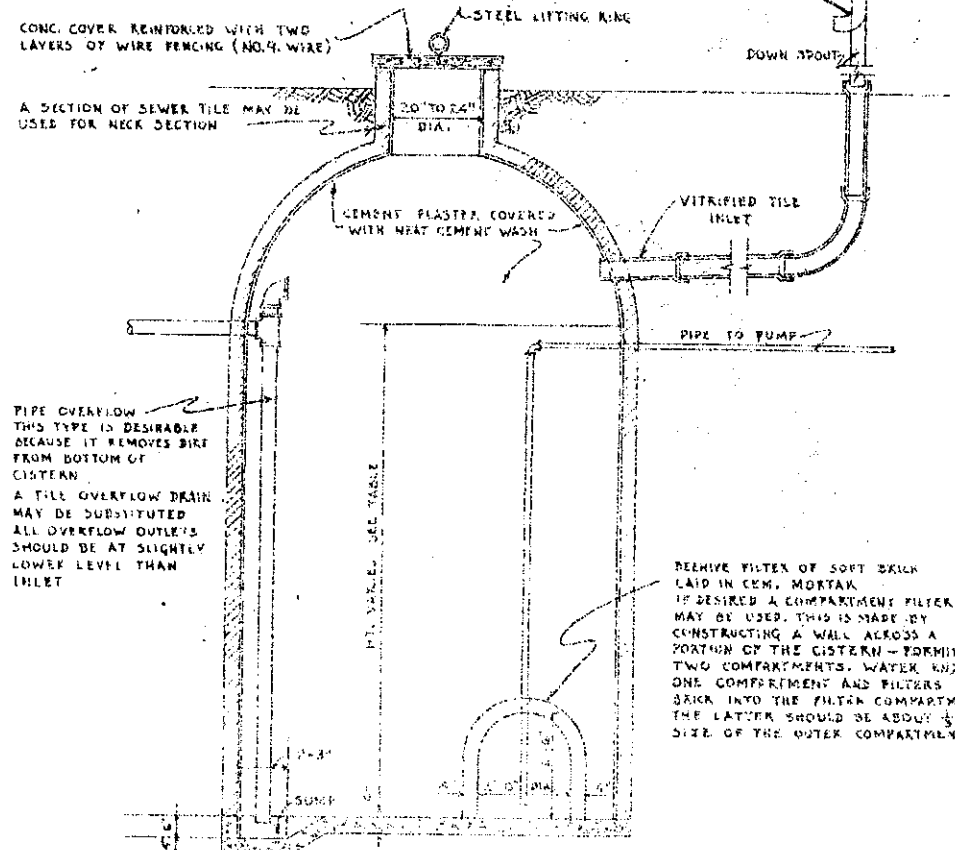


PLAN  
SCALE  $\frac{1}{2}$ " = 1'-0"



SECTION  
SCALE  $\frac{1}{2}$ " = 1'-0"

CAPACITIES OF CIRCULAR CISTERNS  
IN GALLONS & BARRELS (1 BBL. = 31½ GALS.)

DEPTH OF CISTERN IN FEET	DIAMETER OF CISTERN (IN FEET)							
	6		8		10		12	
	GALS.	BBLs.	GALS.	BBLs.	GALS.	BBLs.	GALS.	BBLs.
5			1860	60	2938	93	4230	134
6			2256	72	3525	112	5076	161
7			2632	84	4113	131	5922	188
8	1692	54	3008	96	4700	149	6768	215
9	1904	60	3584	107	5288	168	7614	242
10	2115	67	3760	119	5875	187	8460	269
11	2327	74	4132	131	6463	205	9306	295
12	2537	81	4512	143	7050	224	10152	322

COOPERATIVE EXTENSION WORK IN  
 AGRICULTURE AND HOME ECONOMICS  
 STATE OF NORTH DAKOTA  
 NORTH DAKOTA AGRICULTURAL COLLEGE  
 AND  
 U.S. DEPT. OF AGRICULTURE COOPERATING  
 EXT. AGR'L ENGINEER-FARGO, N. DAK.  
**CIRCULAR BRICK CISTERN**  
 MIDWEST 85533-33 EX. 5412 SHEET 1 OF 1