

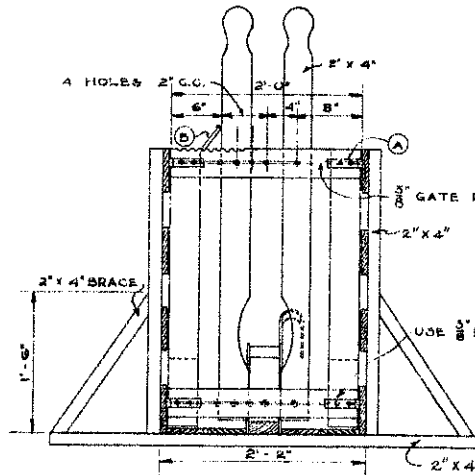
FOOT REST
SCALE 1" = 1'-0"

BILL OF MATERIALS

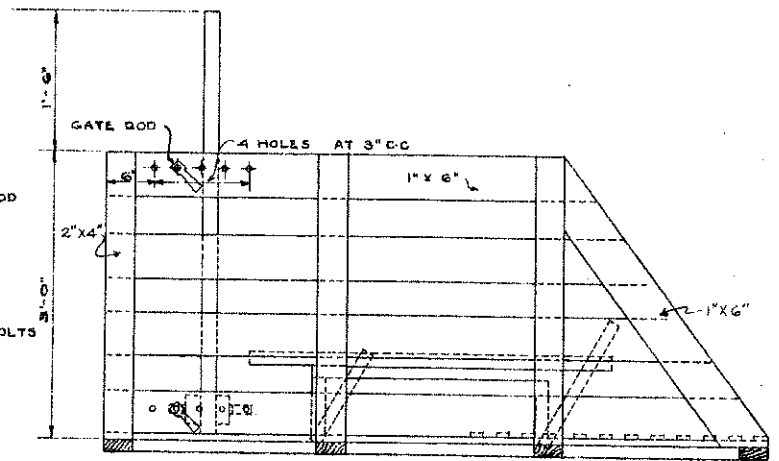
ITEM	NO	PCS	SIZE	ITEM	NO	PCS	SIZE
CROSS Pcs	1		2"x4"x14'-0"	DETAIL D	1		1/2"x2'-3" (ROUND) (BAR)
UPRIGHTS	1		2"x4"x18'-0"	" F	3		1 1/2"x3/4"x1/4" (FLAT) (BAR)
SLANT ENDS	1		1"x6"x8'-0"	" "	10		1 1/2"x1/4"x1'-9" (")
"	2		1"x6"x12'-0"	MACHINE BOLTS			
FLOOR	2		1"x6"x14'-0"	" "	2		1/2" x 7"
"	1		1"x6"x19'-0"	" "	4		1/2" x 8"
BRACES	1		2"x4"x7'-0"	" "	8		3/8" x 5"
LIFT	1		2"x4"x8'-0"	" "	1 1/2"		16d common
FOOT REST	2		2"x4"x12'-0"	NAILS			8d common
STANCHION	2		2"x4"x14'-0"	" "	1 1/2"		8d common

HARDWARE

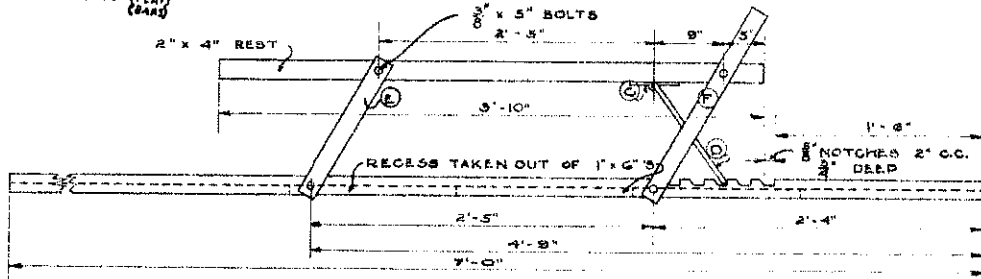
GATE RODS	2		3/8"x2'-9" (ROUND) (BARS)
DETAIL A	8		1"x1 1/2"x0'-6" (FLAT) (BARS)
" B	1		3/8"x1'-0" (ROUND) (BARS)
" C	1		2"x4"x0'-6" (FLAT) (BARS)



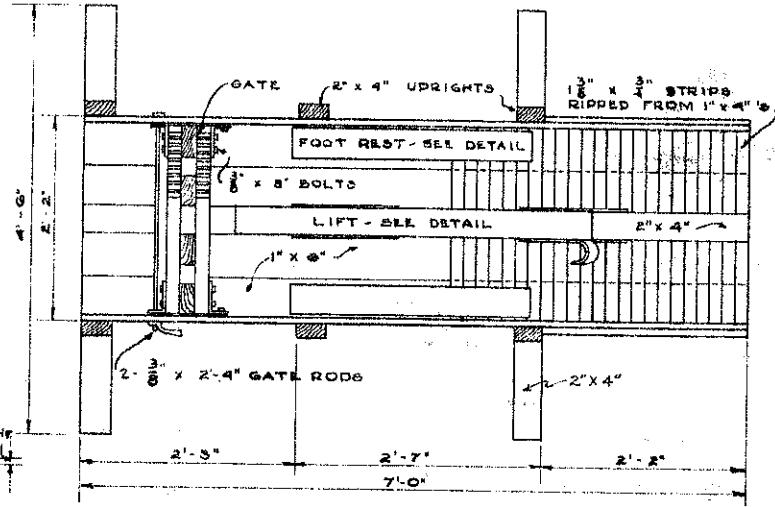
END ELEVATION
SCALE 1" = 1 FT



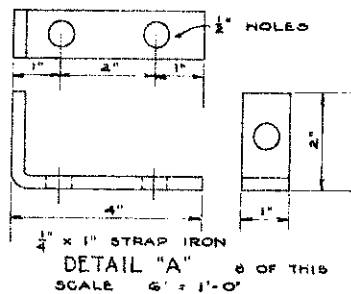
SIDE ELEVATION
SCALE 1" = 1 FT



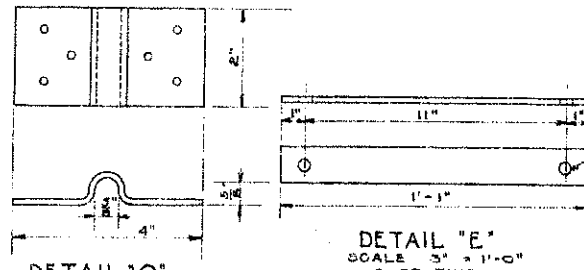
DETAIL OF LIFT
SCALE 1 1/2" = 1'-0"



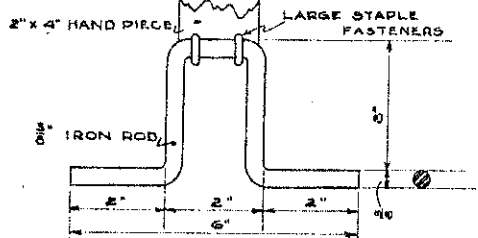
PLAN
SCALE 1" = 1'-0"



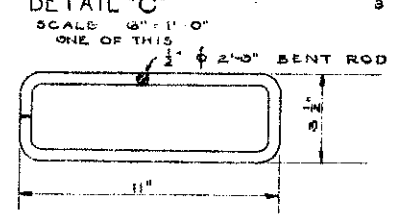
DETAIL "A"
SCALE 6" = 1'-0"



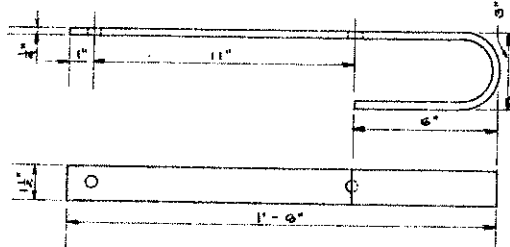
DETAIL "E"
SCALE 3" = 1'-0"



DETAIL "B"
SCALE 6" = 1'-0"



DETAIL "C"
SCALE 6" = 1'-0"



DETAIL "F"
SCALE 3" = 1'-0"

COOPERATIVE EXTENSION WORK IN
AGRICULTURE AND HOME ECONOMICS
STATE OF NORTH DAKOTA
NORTH DAKOTA AGRICULTURAL COLLEGE
AND
U. S. DEPT. OF AGRICULTURE COOPERATING
EXT. AGR'L ENGINEER - FARGO, N. DAK.
BREEDING & RINGING CRATE
MIDWEST 77621-337 EX. 5367 SHEET 1 OF 1