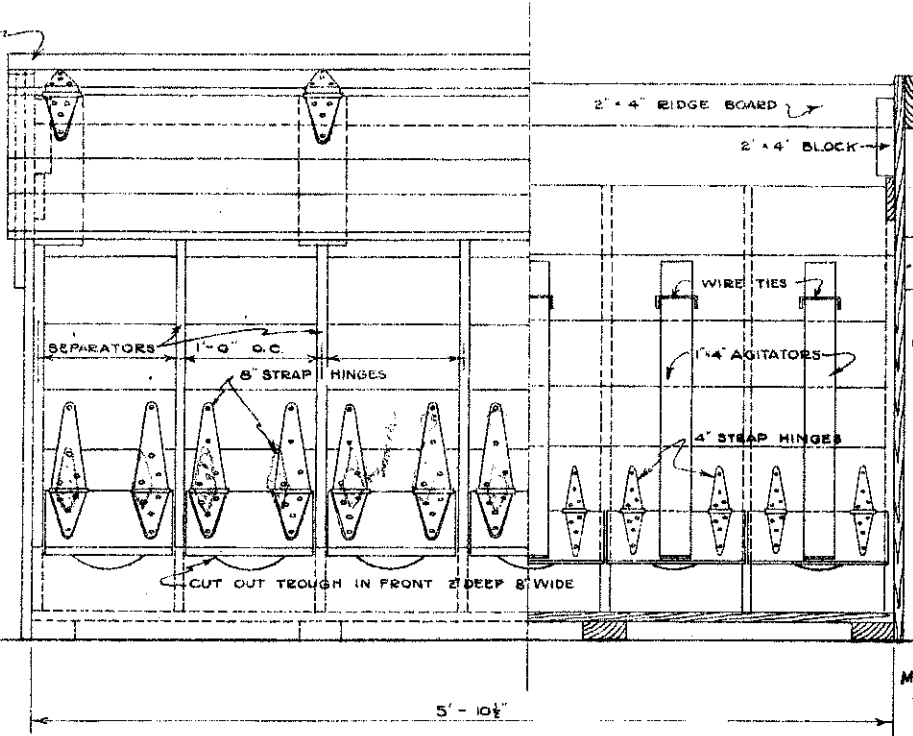


SECTION
SCALE 1 1/2" = 1'-0"



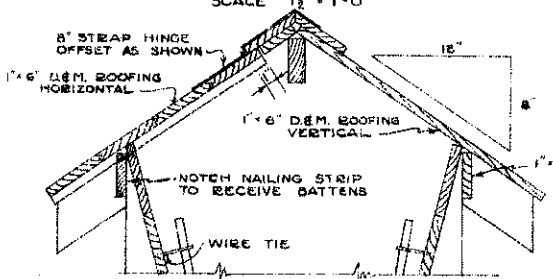
ELEVATION
SCALE 1 1/2" = 1'-0"

BILL OF MATERIALS

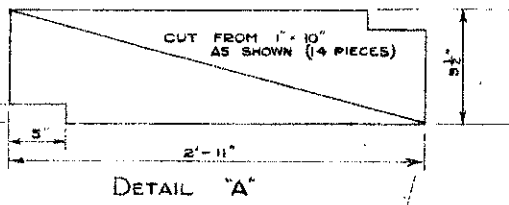
CROSS TIES	2	1" X 10'-0"
TROUGH FRONT	1	2" X 5" X 12'-0"
FLOORING	1	1" X 12" X 12'-0"
"	1	1" X 4" X 12'-0"
"	1	1" X 3" X 6'-0"
ENDS	1	1" X 10" X 6'-0"
"	1	1" X 10" X 8'-0"
RIDGE TIES	1	1" X 4" X 10'-0"
PARTITIONS	1	1" X 10" X 12'-0"
"	1	1" X 10" X 10'-0"
RAFTERS	1	1" X 4" X 10'-0"
"	1	2" X 4" X 6'-0"
ROOF	5	1" X 6" X 14'-0"
NAIL STRIP	1	1" X 4" X 12'-0"
BATTENS	1	1" X 4" X 8'-0"
SIDING	6	1" X 6" X 12'-0"
DOORS	1	1" X 10" X 12'-0"
AGITATOR	2	1" X 4" X 14'-0"

HARDWARE

HINGE	24	8" STRAP
"	4	6"
"	36	4"
METAL RIDGE (G.I.)	6	6" X 6'-6"
WIRE		FOR TIES
NAILS		
PAINT		

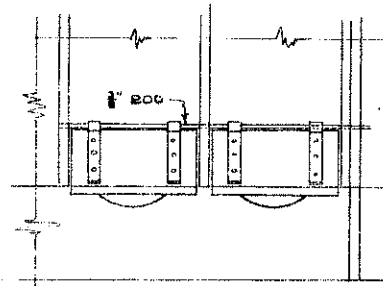


DETAIL OF DOOR
SCALE 1 1/2" = 1'-0"

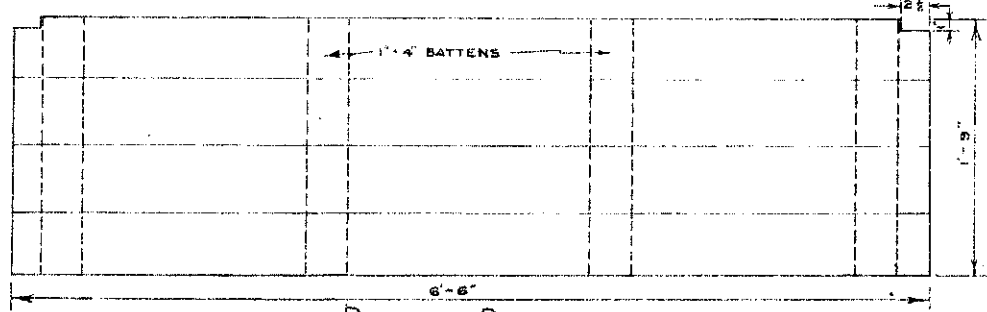


DETAIL 'A'

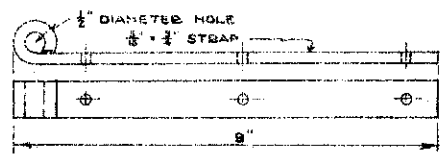
ALTERNATE DETAIL FOR COVER HINGE



ALTERNATE DETAIL FOR COVER HINGES
SCALE 1 1/2" = 1'-0"



DETAIL OF DOOR
SCALE 1 1/2" = 1'-0"



COOPERATIVE EXTENSION WORK IN
AGRICULTURE AND HOME ECONOMICS
STATE OF NORTH DAKOTA
NORTH DAKOTA AGRICULTURAL COLLEGE
AND
U. S. DEPT. OF AGRICULTURE COOPERATING
EXT. AGR'L. ENGINEER- FARGO, N. DAK.
HOG SELF FEEDER
MIDWEST 77612 23 EX 5383 SHEET 1 OF 1