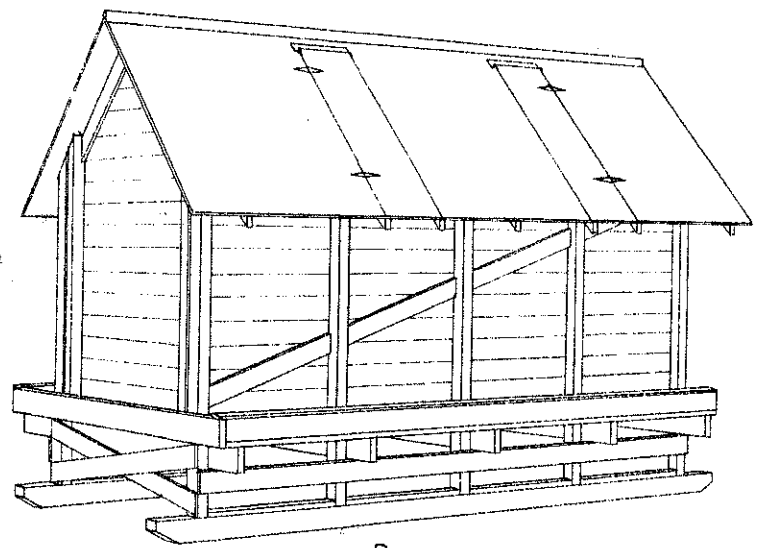
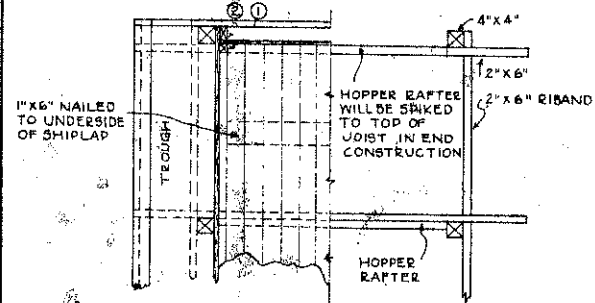


END ELEVATION
SCALE 1/2" = 1'-0"

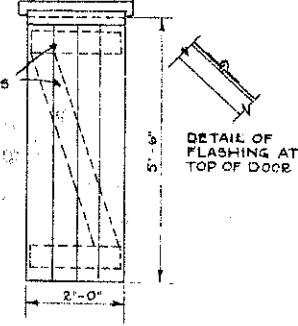


PERSPECTIVE

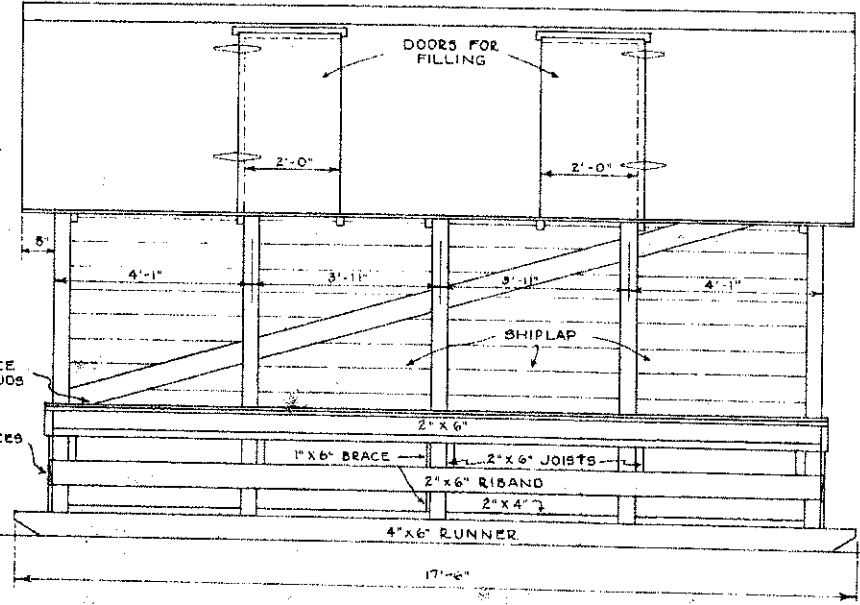
CROSS SECTION
SCALE 1/2" = 1'-0"



SECTION A-A
(RIGHT HALF IS CUT AWAY)



DOOR DETAIL

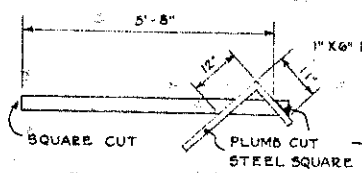


SIDE ELEVATION
SCALE 1/2" = 1'-0"

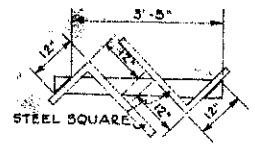
ROOFING SHALL BE CORRUGATED GALVANIZED IRON FASTENED SECURELY TO NAILING STRIPS OR PREPARED ROLL ROOFING WELL NAILED TO SHIPLAP.

NOTES: AFTER STUDS, JOISTS, AND RIBANDS ARE FASTENED TOGETHER, THE HOOPER CONSTRUCTION WILL BE NECESSARY. SHIPLAP WILL HAVE TO BE NAILED ALTERNATELY ON THE SIDES AND ON THE HOOPER. NAIL A 2"x2" NAILING STRIP AT THIS STRIP WILL RECEIVE THE END SHIPLAP. A 2"x3" CLEAT AT ② WILL HOLD SHIPLAP IN PLACE WHEN FEEDER IS FULL. ONE END MAY BE MADE INTO A DOOR BY NAILING BATTENS ON THE BACK OF SHIPLAP AS SHOWN ON END ELEVATION.

DIMENSIONS MAY BE CHANGED FOR INDIVIDUAL CONDITIONS, SIZE HERD, AND SIZE OF ANIMALS. MAKE TROUGH 20" HIGH FOR BABY BEEF CATTLE.



RAFTER CUTS



HOPPER RAFTER CUTS

LENGTH (FT.)	CAPACITY IN BUSHELS OF CORN		
	4 FT. HEIGHT	5 FT. HEIGHT	6 FT. HEIGHT
16	247	309	370
42	185	251	278

FOR BABY BEEVES
MAKE TROUGH 20" HIGH

COOPERATIVE EXTENSION WORK IN
AGRICULTURE AND HOME ECONOMICS
STATE OF NORTH DAKOTA
NORTH DAKOTA AGRICULTURAL COLLEGE
AND
U.S. DEPT. OF AGRICULTURE COOPERATING
EXT. AGR'L. ENGINEER- FARGO, N. DAK.

CATTLE SELF FEEDER