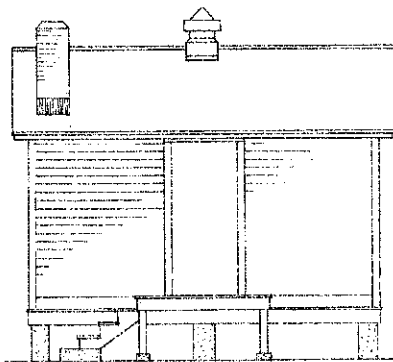
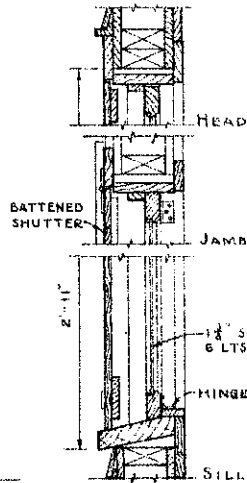


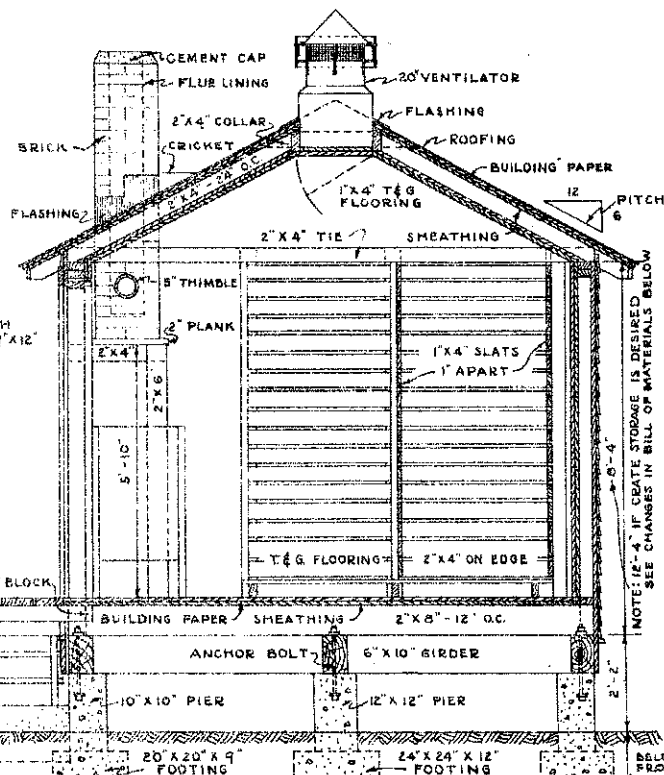
END ELEVATION
SCALE 1/2" = 1'-0"



FRONT ELEVATION
SCALE 1/2" = 1'-0"

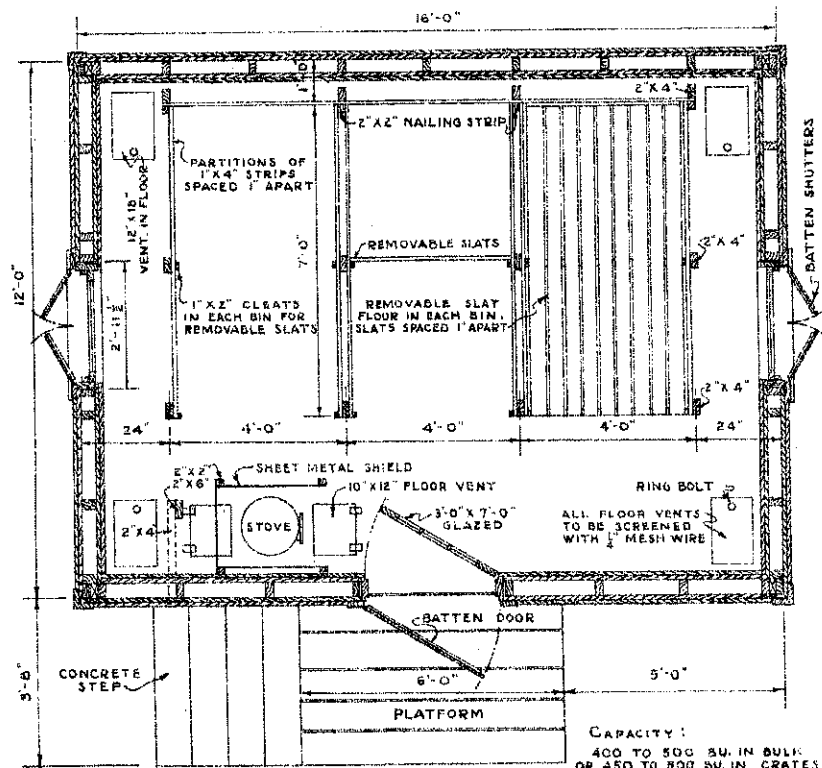


WINDOW DETAIL
SCALE 1/2" = 1'-0"



SECTION
SCALE 1/2" = 1'-0"

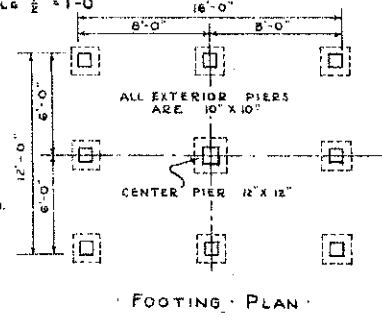
NOTE: 12" x 4" IF CRATE STORAGE IS DESIRED
SEE CHANGES IN BILL OF MATERIALS BELOW



PLAN
SCALE 1/2" = 1'-0"

CAPACITY:
400 TO 500 BU. IN BULK
OR 450 TO 500 BU. IN CRATES

- ### BILL OF MATERIALS
- CONCRETE: MIX 1:2:5
10 BAGS CEMENT 1 CU. YD. SAND 2 CU. YDS. GRAVEL
- CHIMNEY: 2 PLYS. 2" X 4" T.C. FLUR LINING 1-5" T.C. THIMBLE
1 BAG CEMENT 3 CU. FT. SAND 14 SQ. FT. GALV. FLASHING
- LUMBER:
2-6" X 10" X 16'-0" GIRDERS 2100-FT. S.M. SHEATHING
1-4" X 4" X 6'-0" PLATFORM 1100-FT. S.M. 1" X 4" FLOORING
6-2" X 10" X 12'-0" JOISTS 120-FT. S.M. 6" BEVEL SIDING
15-1" X 6" X 12'-0" JOISTS 2-2" X 8" X 16'-0" BASE
5-2" X 6" X 8'-0" BARGES & CHIMNEY 2-1" X 6" X 12'-0"
60-2" X 4" X 8'-0" STUDS, BATTENS, ETC. 1-1" X 6" X 16'-0" RIDGE
13-2" X 4" X 12'-0" PLATES, TIES & BINS 1600-LIN. FT. 1" X 4" BINS
6-2" X 4" X 16'-0" PLATES 72-LIN. FT. 1" X 3" FASCIA
6-2" X 2" X 6'-0" NAILING STRIPS 64-LIN. FT. 1 1/2" X 1 1/2" DRIP MOULD.
100-LIN. FT. 1" X 2" BINS
8-1 1/2" X 4" X 10'-0" CORNER BOARDS
1-3' 0" X 9' 0" X 1 1/2" GLAZED DOOR, FRAME, & HARDWARE
2-3/8" X 1/2" X 12" WITH FRAMES AND HARDWARE
- MISCELLANEOUS:
1-1" X 12" ANCHOR BOLTS 1-PIECE GALV. METAL 3'-0" X 7'-0"
3" SQUARES ROOFING 3-ROLLS OF BUILDING PAPER
1-20" GALV. METAL VENTILATOR 2-1 1/2" X 12" STRAP IRON
6- FLOOR VENTS 4- GAL. PAINT (3 COATS OUTSIDE)
- NAILS:
25-LBS. 6d COMMON 100-LBS. 6d COMMON 35-LBS. 16d COMMON
- FOR CRATE STORAGE CHANGE BILL OF MATERIALS AS FOLLOWS:
ADD TO LIST. OMIT FROM LIST.
42-2" X 4" X 12'-0" 48-2" X 4" X 8'-0"
280-FT. S.M. FLOORING 8-1 1/2" X 4" X 10'-0" CORNER BOARDS
280-FT. S.M. 6" BEVEL SIDING 1800-LIN. FT. 1" X 4" BINS
520-FT. S.M. SHEATHING 100-LIN. FT. 1" X 2" BINS
8-1 1/2" X 4" X 10'-0" CORNER BOARDS
1- GAL. PAINT
1- ROLL BUILDING PAPER.



COOPERATIVE EXTENSION WORK IN
AGRICULTURE AND HOME ECONOMICS
STATE OF NORTH DAKOTA
NORTH DAKOTA AGRICULTURAL COLLEGE
AND
U. S. DEPT. OF AGRICULTURE COOPERATING
EXT. AGRI. ENGINEER-FARGO, N. DAK.
SWEET POTATO STORAGE HOUSE
MIDWEST 7841-793 EX. 5331 SHEET 1 OF 1

ADAPTED FROM
U.S.D.A. PLAN