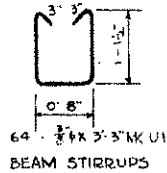
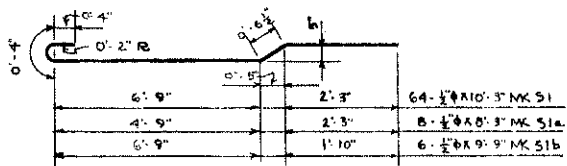


### BEAM SCHEDULE

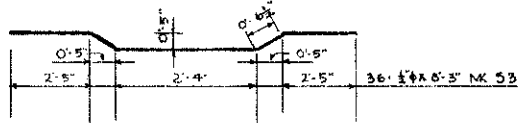
BEAM			STRAIGHT BARS		BENT BARS			STIRRUPS							
MARK	NO.	SIZE	NO.	SIZE	LENGTH	MARK	NO.	SIZE	LENGTH	MARK	NO.	SIZE	LENGTH	MARK	SPACING EACH END
B1	4	10"X16"	2	$\frac{5}{8}$ "	10'-0"	B1a	2	$\frac{3}{4}$ "	15'-3"	B1	8	$\frac{3}{8}$ "	3'-3"	U1	3'-6" @ 6"
B2	4	10"X16"	2	$\frac{5}{8}$ "	10'-0"	B2a	2	$\frac{3}{4}$ "	14'-6"	B2	8	$\frac{3}{8}$ "	3'-3"	U1	3'-6" @ 6"

1/2" COVER ON BEAM BARS TOP & BOTTOM

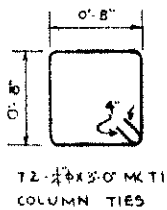
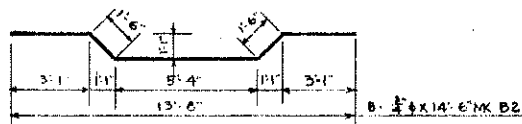
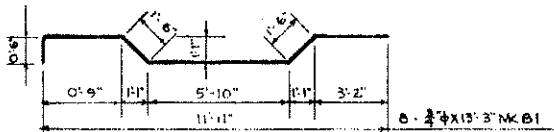
#### SLAB BARS



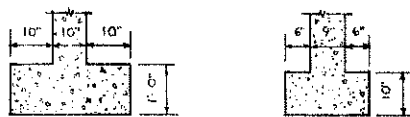
BEAM STIRRUPS



#### BEAM BARS

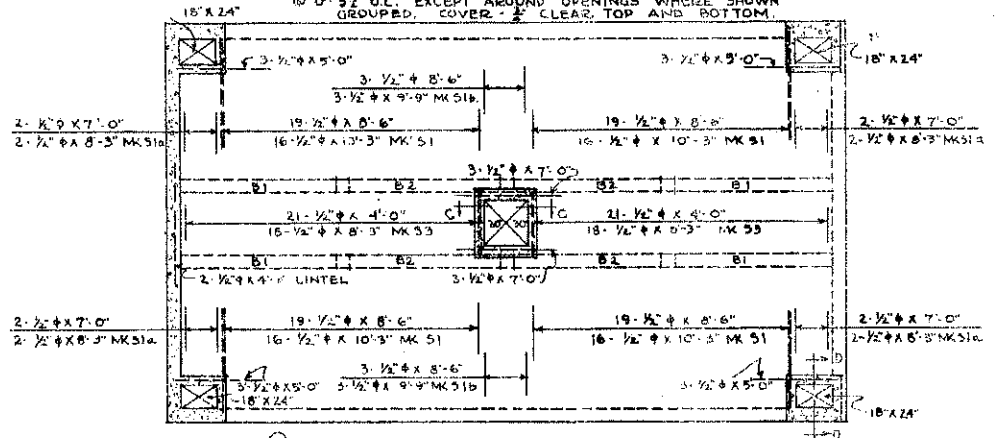


12-#10@3'-0" MK T1  
COLUMN TIES

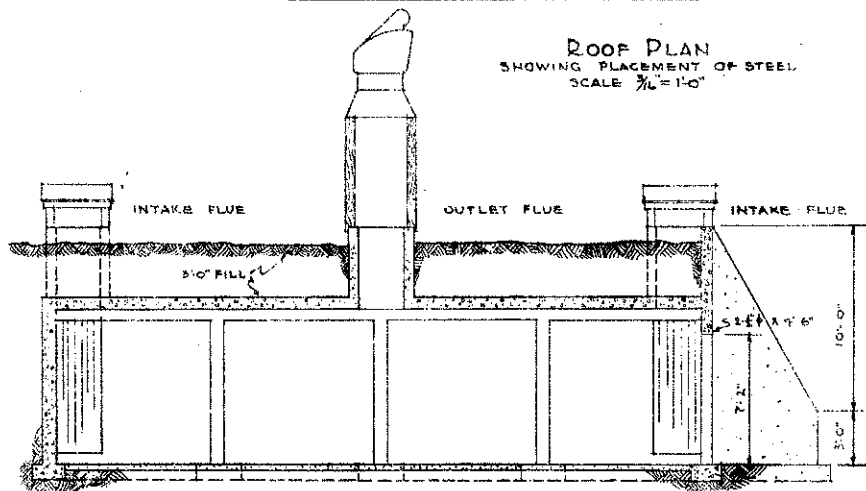


COLUMN FOOTING WALL FOOTING  
SCALE 1/2" = 1'-0"

NOTE: ALL SLAB BARS ALTERNATE STRAIGHT AND BENT @ 0'-5 1/2" O.C. EXCEPT AROUND OPENINGS WHERE SHOWN GROUPED. COVER = 1/2" CLEAR TOP AND BOTTOM

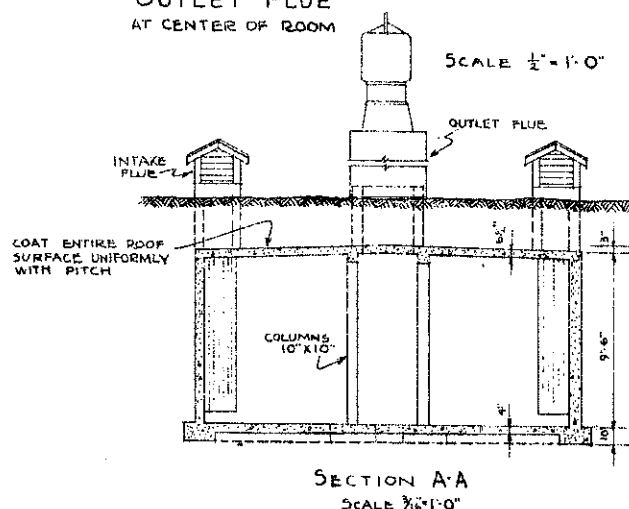
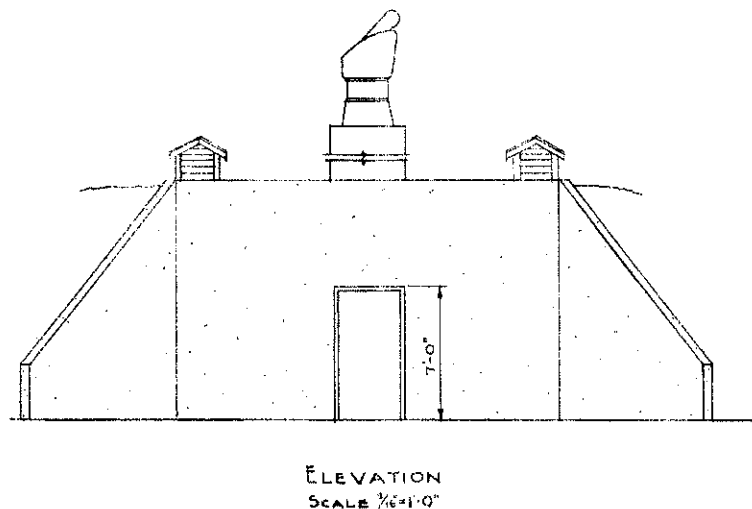
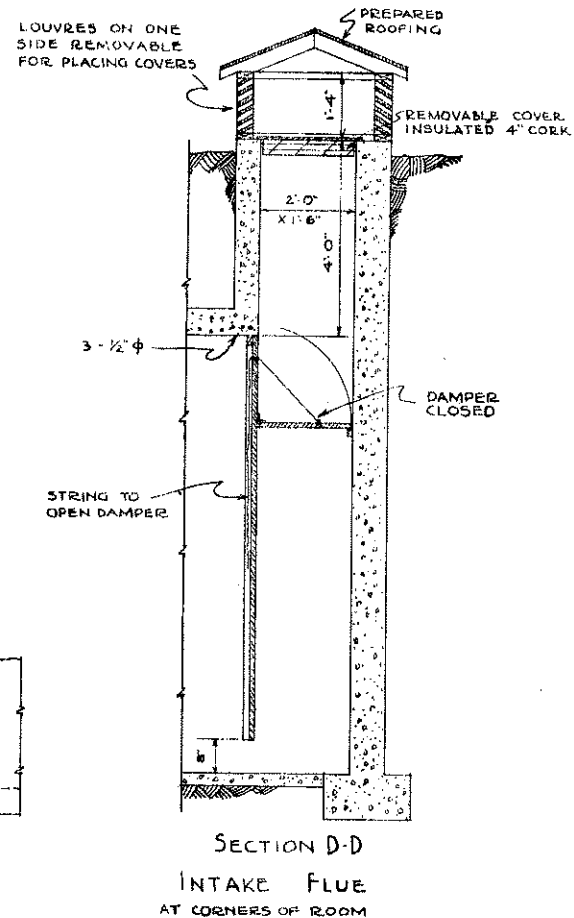
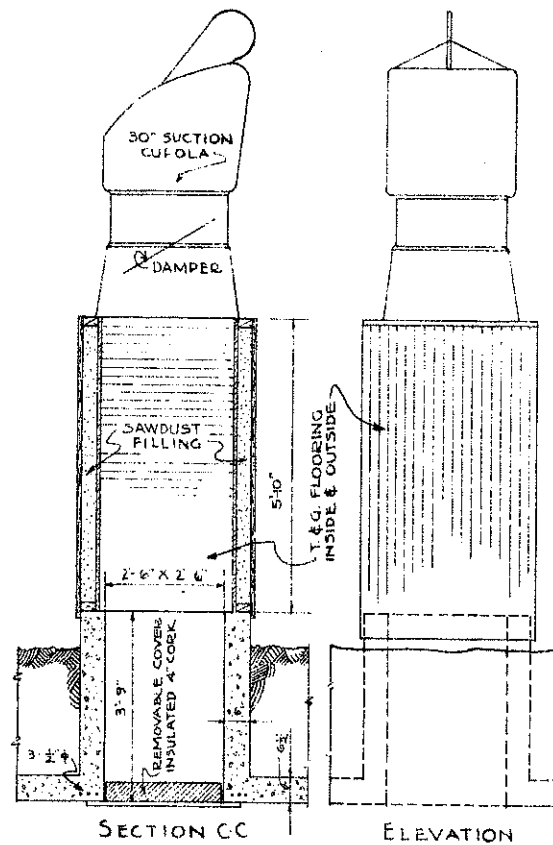
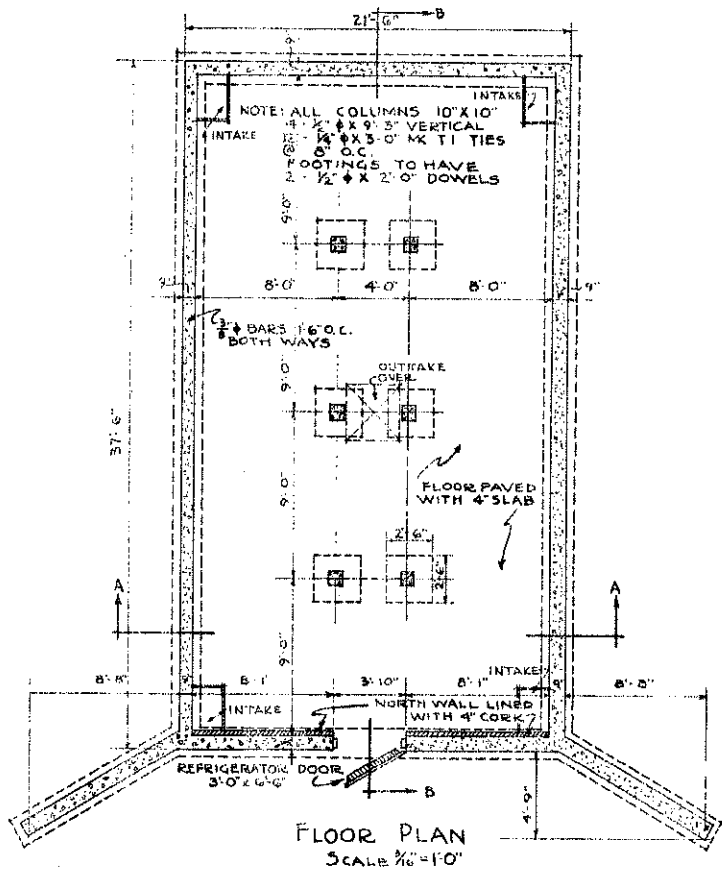


ROOF PLAN  
SHOWING PLACEMENT OF STEEL  
SCALE 3/16" = 1'-0"



SECTION B-B  
SCALE 1/8" = 1'-0"

COOPERATIVE EXTENSION WORK IN  
AGRICULTURE AND HOME ECONOMICS  
STATE OF NORTH DAKOTA  
NORTH DAKOTA AGRICULTURAL COLLEGE  
AND  
U. S. DEPT. OF AGRICULTURE COOPERATING  
EXT. AGR'L. ENGINEER- FARGO, N. DAK.  
**FRUIT & VEGETABLE STORAGE**  
MIDWEST 73401-33 EX. 5329 SHEET 1 OF 2



COOPERATIVE EXTENSION WORK IN  
 AGRICULTURE AND HOME ECONOMICS  
 STATE OF NORTH DAKOTA  
 NORTH DAKOTA AGRICULTURAL COLLEGE  
 AND  
 U. S. DEPT. OF AGRICULTURE COOPERATING  
 EXT. AGR'L. ENGINEER- FARGO, N. DAK.  
**FRUIT & VEGETABLE STORAGE**  
 MIDWEST 75401-33 EX. 5329 SHEET 2 OF 2