

SECTION & END FRAMING

FRONT & REAR VIEW

RAFTER CUTTING DETAIL

SCALE *

NOTES

1. LENGTH MAY BE INCREASED TO 7'-0" FOR LARGE SOWS
2. USE DOOR IN FRONT & BACK.
3. DO NOT OMIT VENTILATORS AT ENDS - THEY ARE IMPORTANT
4. MEASURE WIDTH OF 6 ROOF BOARDS & ALLOW 3/4" CRACKS FOR METAL BATTENS - MAKE LENGTH OF FRAME 3/4" SHORTER THAN RESULTING DIMENSION.
5. NOTE 2" X 6" BLOCKS SUPPORTING GUARD RAIL.

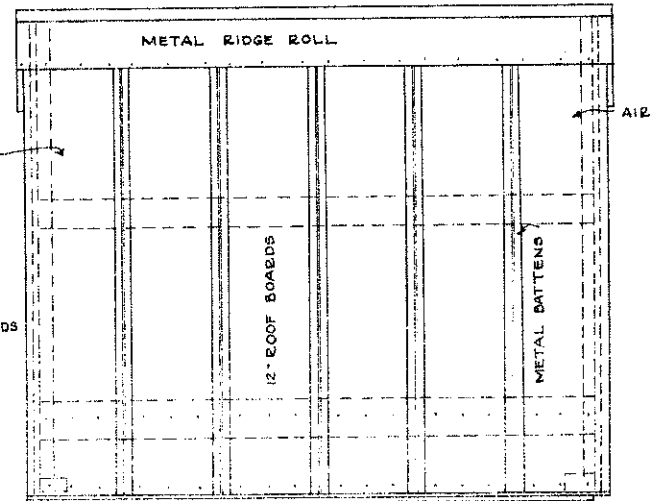
BILL OF MATERIAL

- LUMBER:
- 2- 2" X 4" X 8'-0"
 - 11- 2" X 4" X 8'-0"
 - 1- 2" X 6" X 10'-0"
 - 2- 1" X 6" X 6'-0" WESTERN WHITE PINE BACH BOARDS
 - 15- 1" X 12" X 6'-0"
 - 5- 1" X 12" X 4'-0"

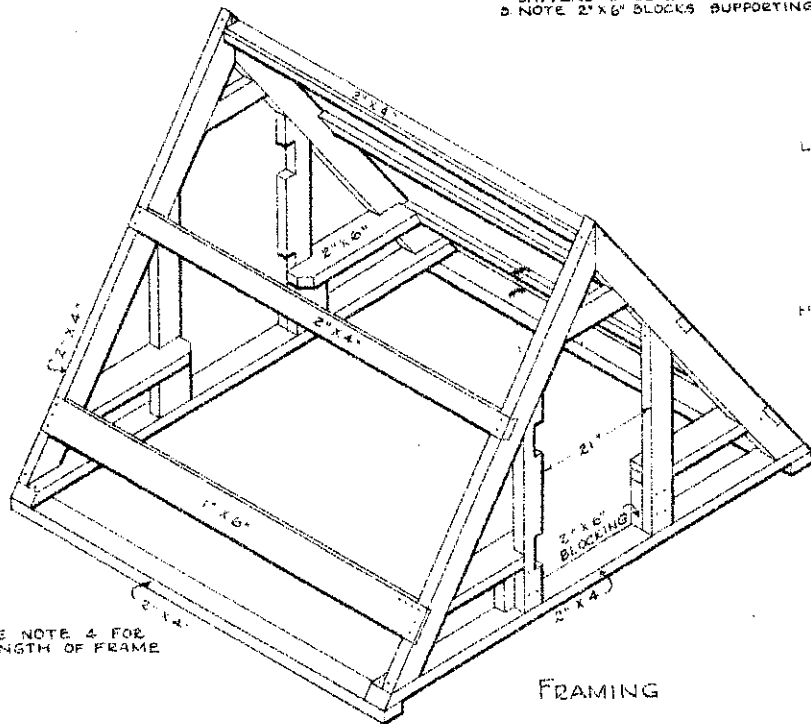
HARDWARE

- NAILS
- 23 LBS 16d COMMON
 - 2 1/2 LBS 8d
 - 1 1/2 LBS 6d
 - 1 LB 2" OR 1" GALV. NAILS FOR BATTENS
- 4- 5" HEAVY STRAP HINGES WITH SCREWS
 - 6'- 6" GALV. IRON RIDGE ROLL
 - 12- 6" GALV BATTENS
 - 1- 8"
 - 2- 6" WROUGHT STEEL HASPS WITH STAPLES FOR FASTENING DOORS
 - 2- 2" STEEL HOOKS WITH 2 STAPLES EACH FOR HOOKING DOOR BACK TO ROOF.

SCALE FOR ALL DRAWINGS 1" = 1'-0"



SIDE VIEW



FRAMING

SEE NOTE 4 FOR LENGTH OF FRAME

COOPERATIVE EXTENSION WORK IN
 AGRICULTURE AND HOME ECONOMICS
 STATE OF NORTH DAKOTA
 NORTH DAKOTA AGRICULTURAL COLLEGE
 AND
 U. S. DEPT. OF AGRICULTURE COOPERATING
 EXT. AGR'L. ENGINEER - FARGO, N. DAK.
PORTABLE "A" TYPE HOG HOUSE
 MIDWEST 72601-13 EX. 9271 SHEET 158