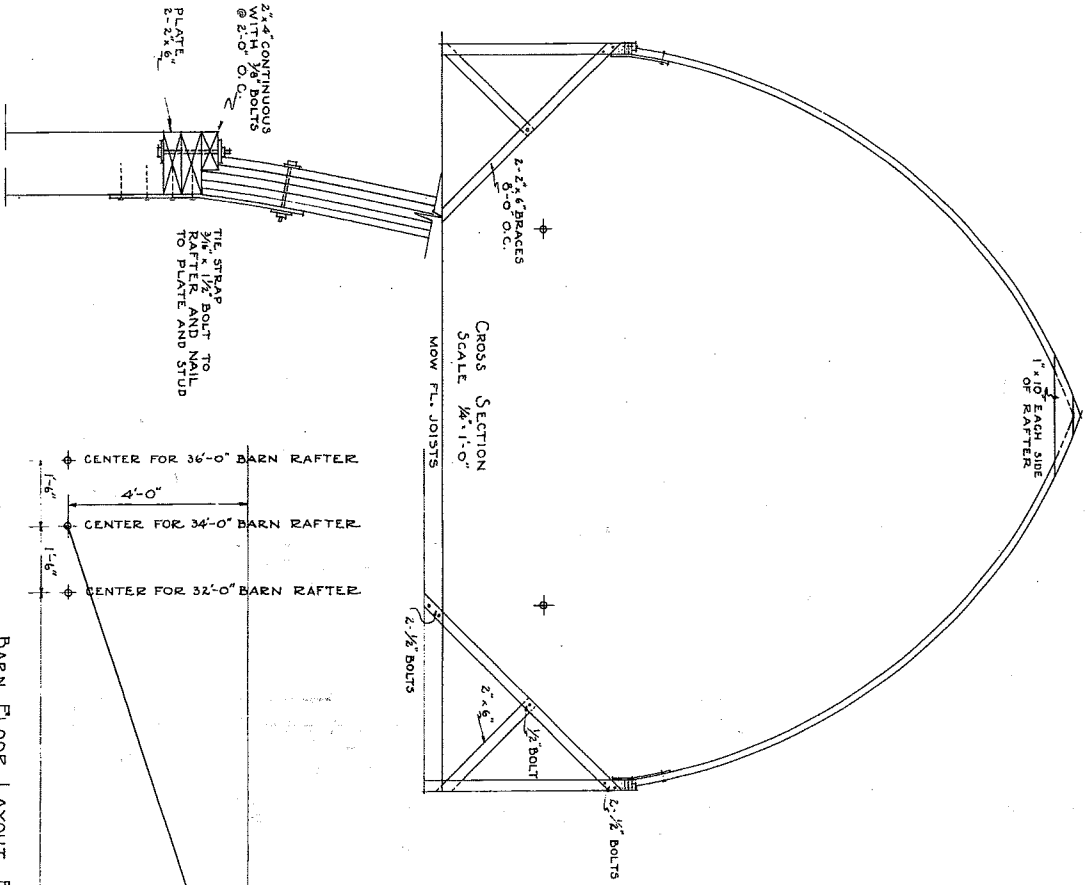
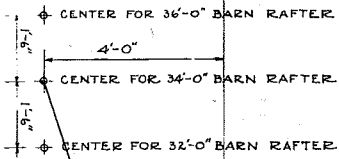


DETAIL OF JOINT  
AT PLATE  
SCALE 1/2"=1'-0"



BARN FLOOR LAYOUT FOR FORMING RAFTERS



24'-0 1/2"

15'-6 1/2"  
16'-6 1/2"  
17'-6 1/2"  
ONE HALF WIDTH OF BARN

32'-0" BARN

32'-0" BARN

35'-0" BARN

RADIUS { 23'-1 1/2"  
23'-2 1/2"  
23'-10"

34'-0" BARN  
30'-0" BARN

RAFTERS TO BE BUILT-UP OF 5-1x4 NAILED WITH 1/2" BOLTS @ 2'-0" O.C. RAFTERS SPACED @ 2'-0" O.C.

1x6 SAW GUIDE FOR CUTTING OF RAFTERS

2x4x6 BLOCKS NAILED TO BARN FLOOR SPACED ABOUT 2'-0" O.C.

SPACE FOR WEDGE BLOCKS  
HARD-WOOD WEDGES  
SAW GUIDE

COOPERATIVE EXTENSION WORK IN  
AGRICULTURE AND HOME ECONOMICS  
STATE OF NORTH DAKOTA  
NORTH DAKOTA AGRICULTURAL COLLEGE  
U. S. DEPT. OF AGRICULTURE COOPERATING  
EXT. AGRIL. ENGINEER-FARROW, N. DAK.  
**GOthic RAFTERS BENT TYPE**  
MIDWEST 72003-731EX. 5220 SHEET 1 of 1