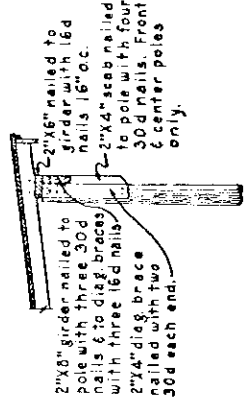
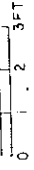
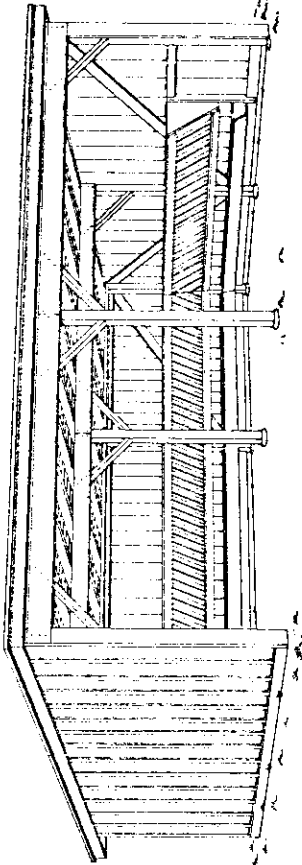


LOWER REAR WALL DETAIL  
ALTERNATE  
POLE CONSTRUCTION

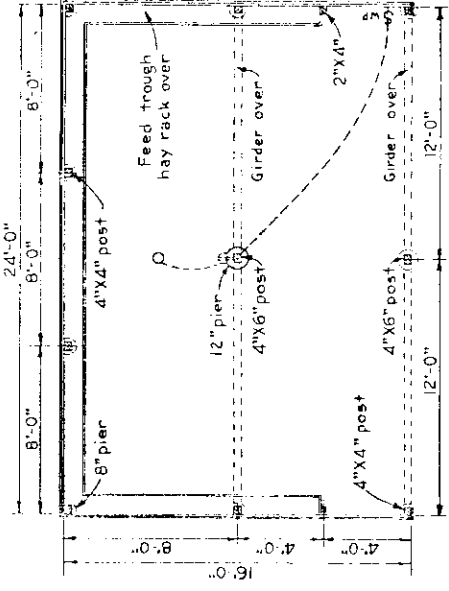
NOTE: Provide 12" diameter concrete pad 6" thick under center pole.



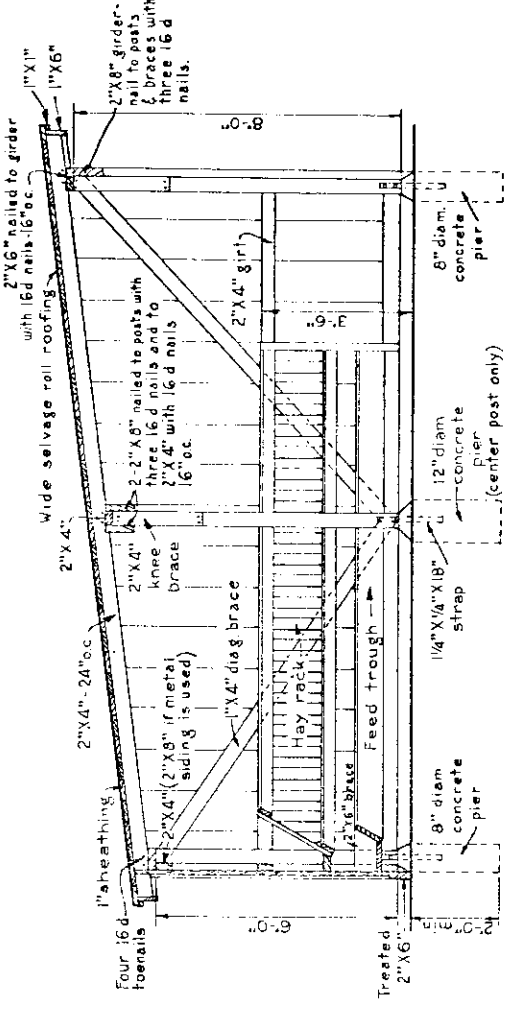
EAVE DETAIL  
ALTERNATE  
POLE CONSTRUCTION



PERSPECTIVE



PLAN



CROSS SECTION

Note: Corrugated metal siding may be used instead of wood if 2x8 girder is substituted for 2x4 in rear wall & one additional 2x4 girder is installed in each end wall about 6'-2" above ground.

BILL OF MATERIALS

CONCRETE MIX 1:3:5  
3 sacks cement 1/3 cu yd sand 1/2 cu yd gravel.

LUMBER

- 1-4"x4"x12'-0"
- 3-4"x4"x14'-0"
- 1-4"x6"x16'-0"
- 2-2"x6"x8'-0"
- 6-2"x8"x12'-0"
- 4-2"x6"x8'-0"
- 700-lin ft 1"x3"

MISCELLANEOUS

- 5-squares roofing
- 20-1/2" x 5" bolts
- 25-1/2"x18" straps
- 5-lbs 6d nails
- 10-lbs 16d nails
- 13-1"x12"x12'-0"
- 17-1"x12"x14'-0"
- 8-1"x8"x12'-0"
- 4-1"x6"x14'-0"
- 2-1"x6"x18'-0"
- 6-1"x4"x12'-0"
- 570-ft BM sheathing 90-lin, ft, 1" x 1"

COOPERATIVE EXTENSION WORK IN  
AGRICULTURE AND HOME ECONOMICS  
DEPARTMENT OF AGRICULTURAL ENGINEERING  
UNIVERSITY OF MARYLAND  
AND  
UNITED STATES DEPARTMENT OF AGRICULTURE COOPERATING

USDA	EX. 5025	SHEET 1 OF 1
SHEEP SHED		

REVISED 1955