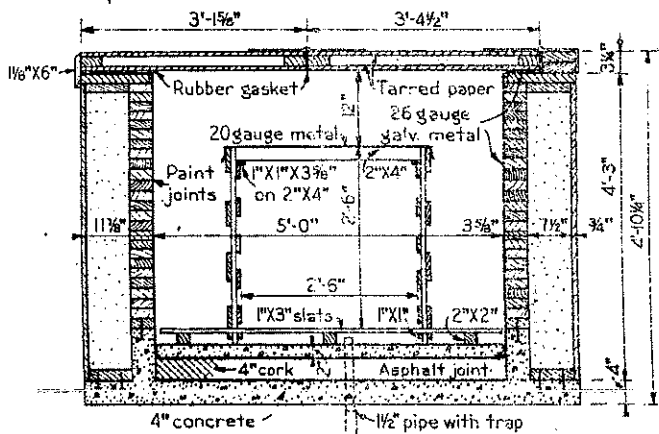
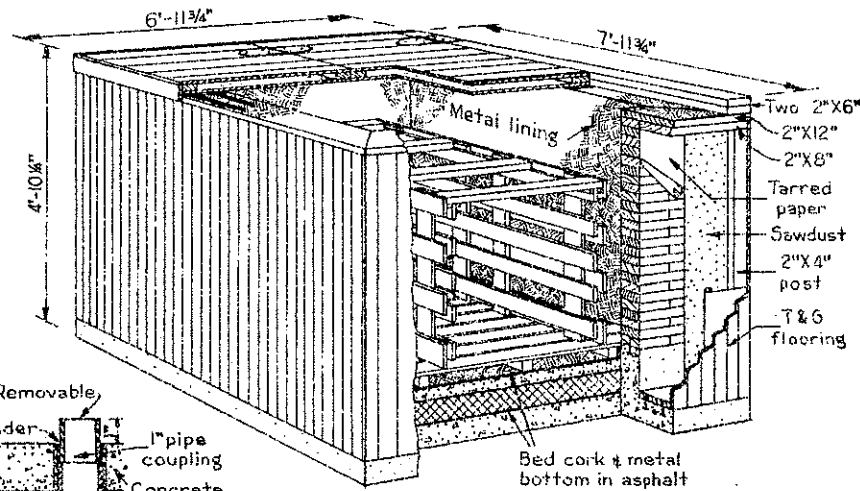


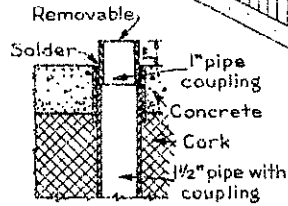
DETAIL OF SLAT FLOOR



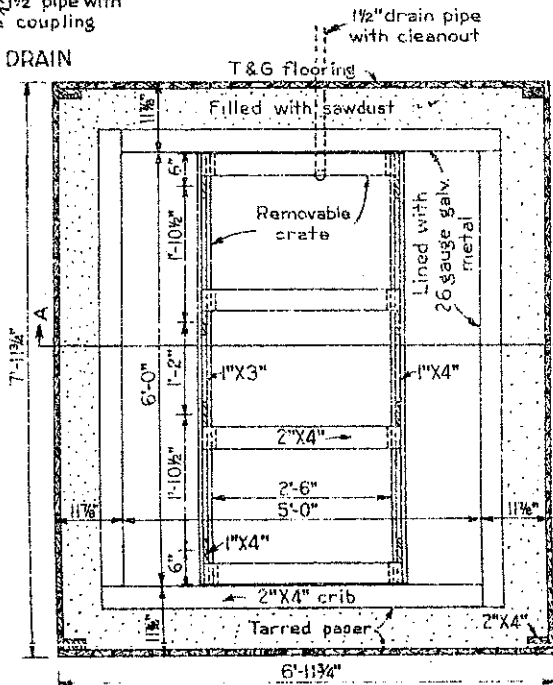
SECTION A-A



PERSPECTIVE



DETAIL OF DRAIN



PLAN

**BILL OF MATERIALS**

**CONCRETE:** 1 1/2 CU. YDS 1:2:4 MIX  
 8 bags cement  
 3/4 cu. yds. sand  
 1/4 cu. yds. gravel

**LUMBER**  
 50 - 2"X4"X12'-0" cribbing  
 (cut 50 pcs. 6'-4" and 50 pcs. 5'-4")  
 2 - 2"X8"X14'-0" plates  
 2 - 2"X8"X16'-0" " "  
 1 - 2"X12"X14'-0" top rail  
 1 - 2"X12"X16'-0" " "  
 1 - 2"X6"X16'-0" hinge plates  
 5 - 2"X4"X16'-0" corner post & top  
 1 - 2"X4"X14'-0" top  
 1 - 1 1/2"X6"X8'-0" sides of top  
 1 - 1 1/2"X6"X14'-0" " "  
 300' BM T&G flooring sides & top  
 3 - 2"X2"X6'-0" slat floor  
 7 - 1"X3"X10'-0" " "  
 1 - 1"X1"X8'-0" " "  
 1 - 2"X4"X10'-0" removable crate  
 6 - 1"X4"X12'-0" " "  
 5 - 1"X3"X12'-0" " "

**MISCELLANEOUS**

2 rolls tarred paper (216 sq. ft)  
 90 bu. sawdust  
 7 sheets 26 gauge galv. metal (3'X6')  
 2 " " " " (2'X6')  
 10 lbs. asphalt  
 10 cork brick 4" thick 12"X36"  
 1 sheet 20 gauge metal (3'X6')  
 3 pair 10" galv. strap hinges  
 1 gal. paint for crib work  
 1/2" drain pipe with trap to suit local conditions

**NAILS**

2 lbs. 20d common  
 10 " 16d "  
 2 " 8d "  
 3 " 6d finish

Capacity: 1800-2000 lbs. of meat, and 1600 lbs. of ice.  
 NOTE: Length and height of box can be made to suit capacity needed. Width of crate must not be increased.

COOPERATIVE EXTENSION WORK IN  
 AGRICULTURE AND HOME ECONOMICS  
 STATE OF NORTH DAKOTA  
 NORTH DAKOTA AGRICULTURAL COLLEGE  
 AND  
 U. S. DEPT. OF AGRICULTURE COOPERATING  
 EXT. AGR. ENGINEER - FARGO, N. DAK.  
**MEAT-CURING BOX**  
 U.S.D.A. 733 EX. 5024 SHEET 1 OF 1