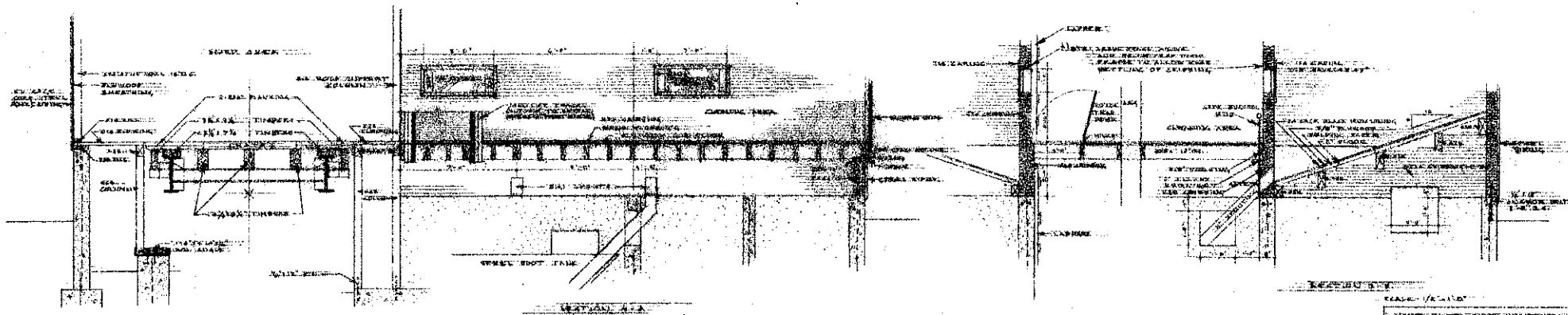
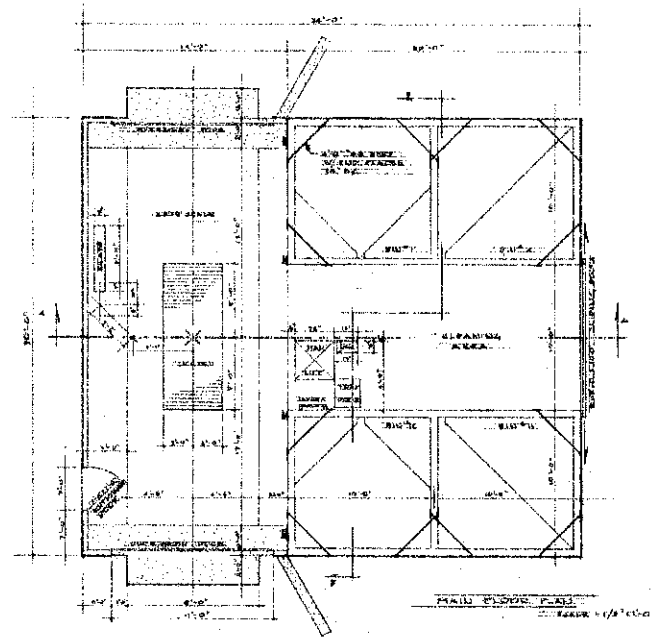
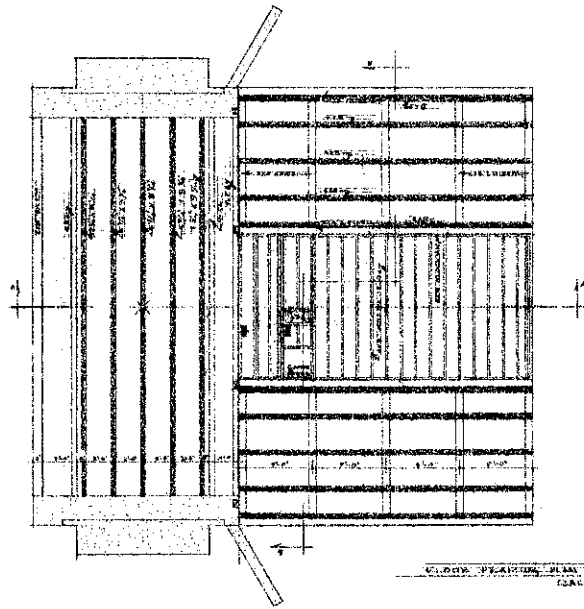


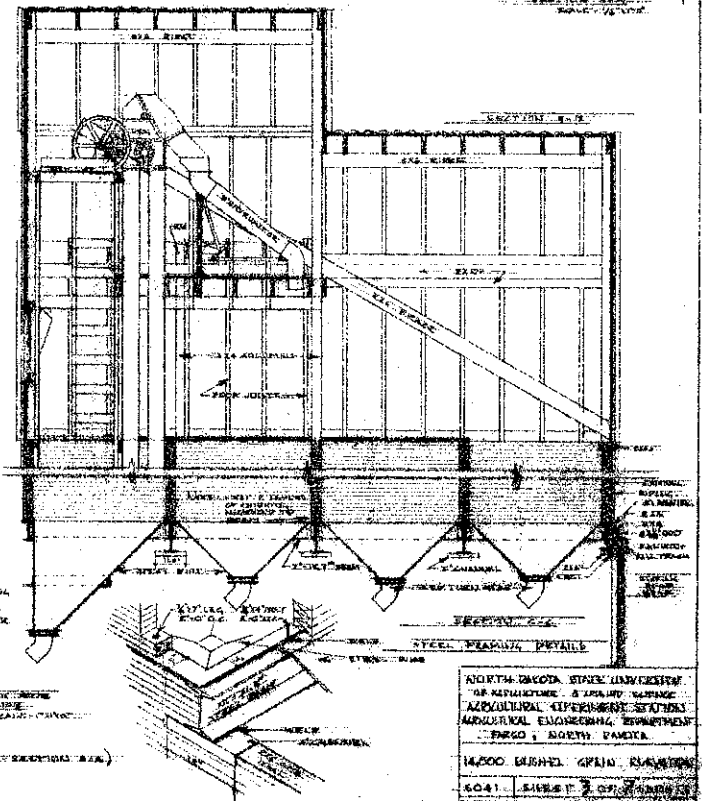
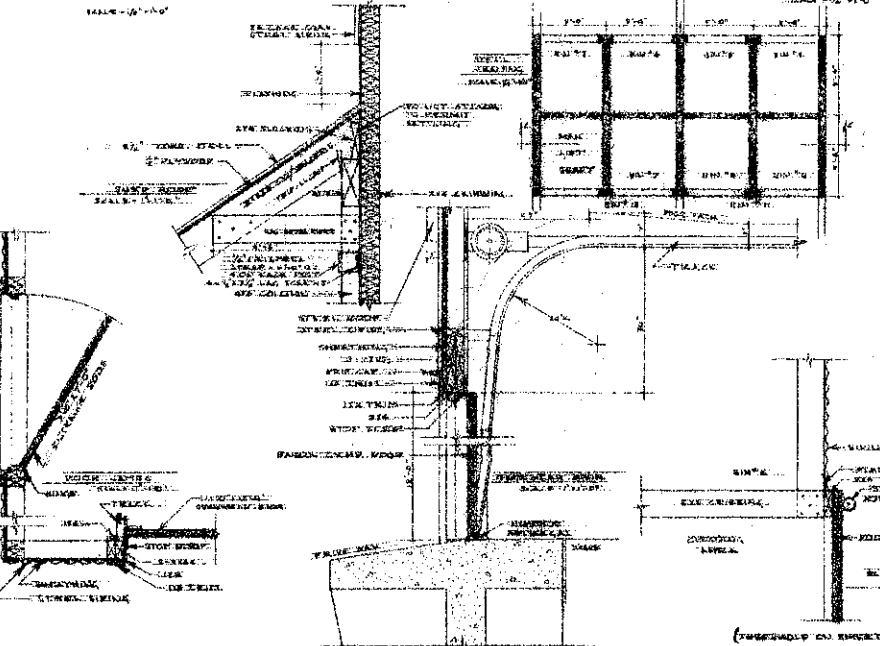
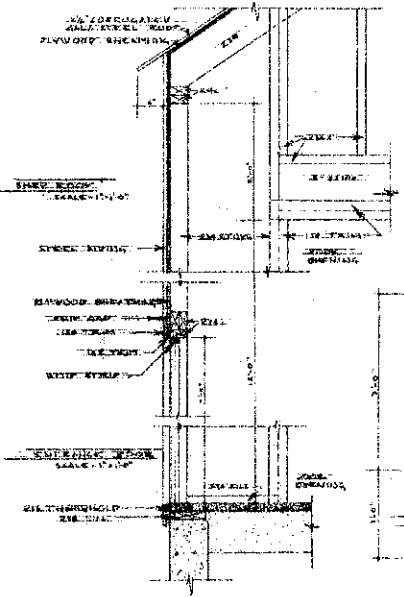
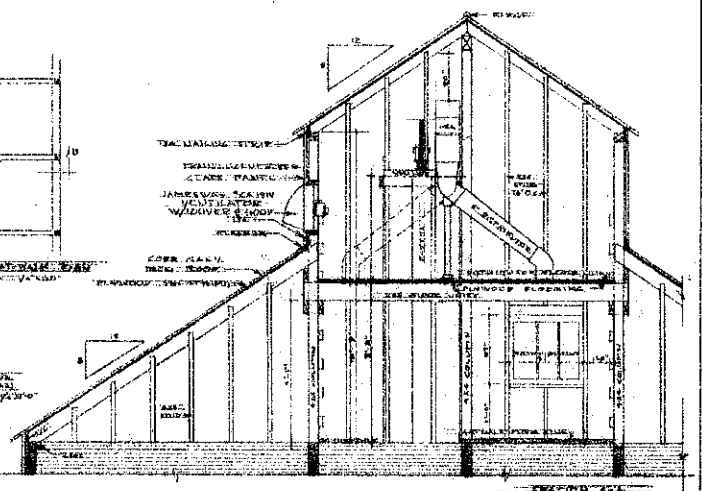
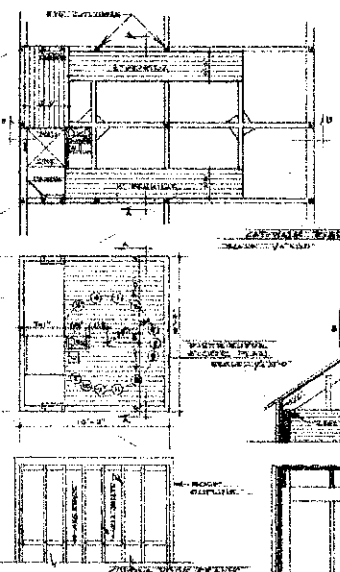
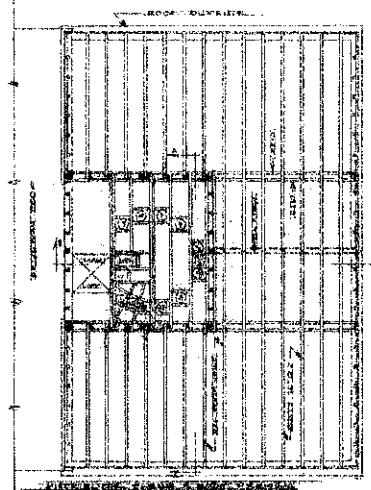
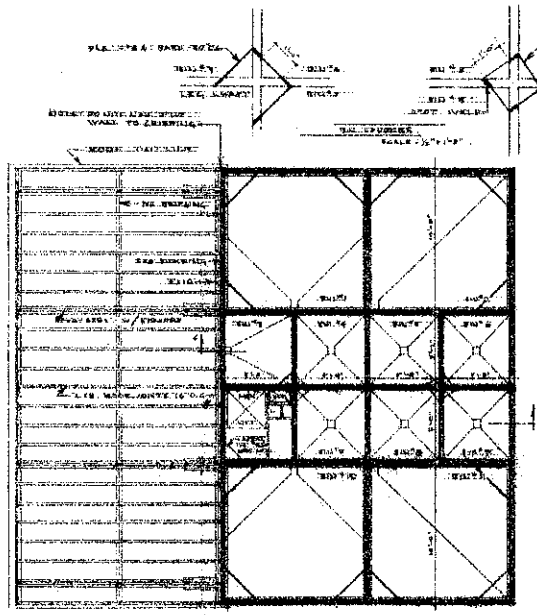
NOTES: ALL CONCRETE WORK SHALL BE DONE IN ACCORDANCE WITH THE REQUIREMENTS OF THE SPECIFICATIONS AND SHALL BE DONE IN ACCORDANCE WITH THE REQUIREMENTS OF THE SPECIFICATIONS AND SHALL BE DONE IN ACCORDANCE WITH THE REQUIREMENTS OF THE SPECIFICATIONS.

NOTES: ALL CONCRETE WORK SHALL BE DONE IN ACCORDANCE WITH THE REQUIREMENTS OF THE SPECIFICATIONS AND SHALL BE DONE IN ACCORDANCE WITH THE REQUIREMENTS OF THE SPECIFICATIONS AND SHALL BE DONE IN ACCORDANCE WITH THE REQUIREMENTS OF THE SPECIFICATIONS.



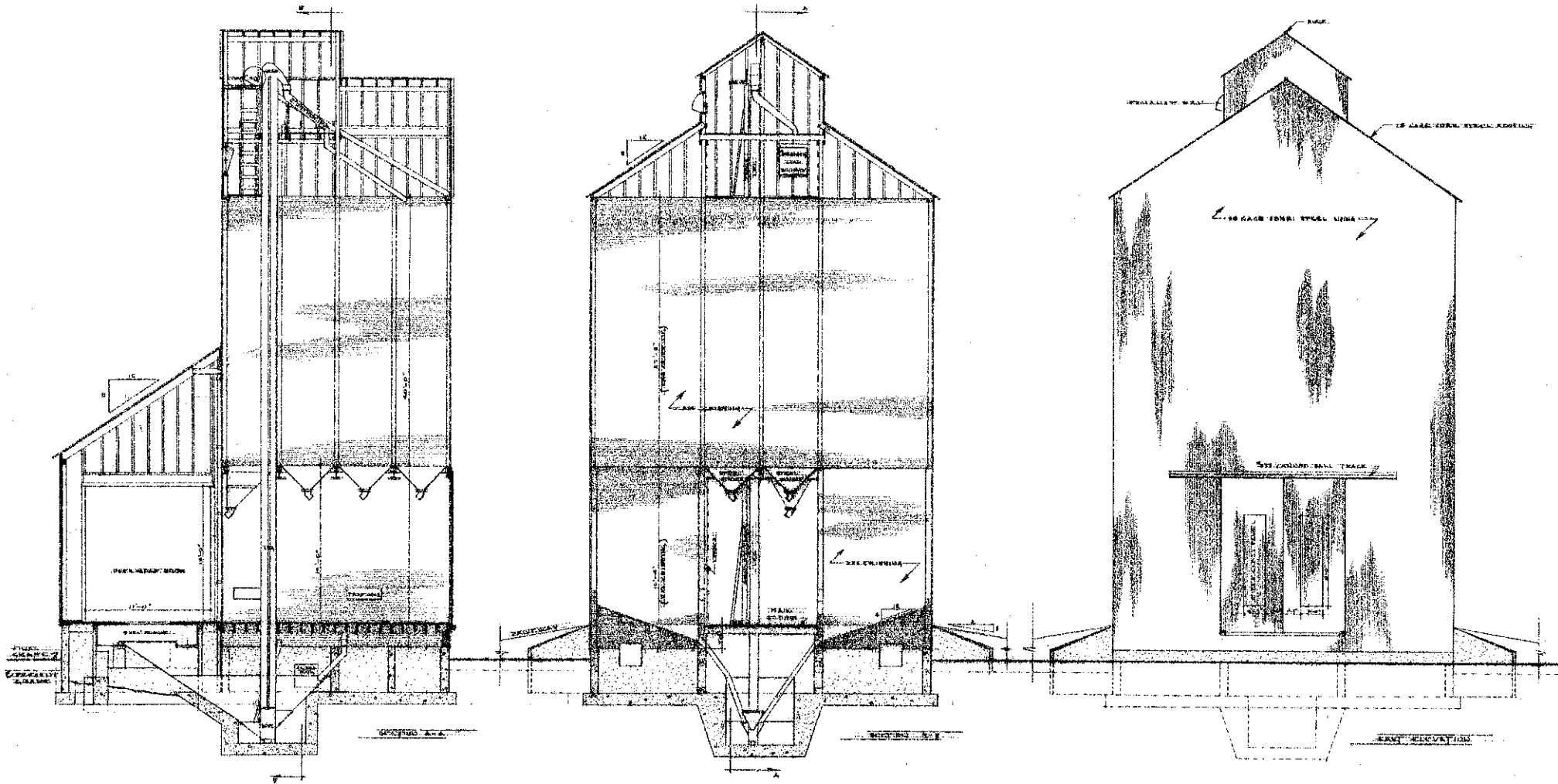
ARIZONA STATE UNIVERSITY
 DEPARTMENT OF AGRICULTURE & MECHANICAL ENGINEERING
 AGRICULTURAL EXPERIMENT STATION
 MECHANICAL ENGINEERING DEPARTMENT
 TUCSON, ARIZONA

19000: BUNNET, GEORGE ALBERT
 SHEET 2 OF 2
 A. B. PLAN AND SECTION
 Drawn by J. C. City, Chas. E. Sullivan, 19000



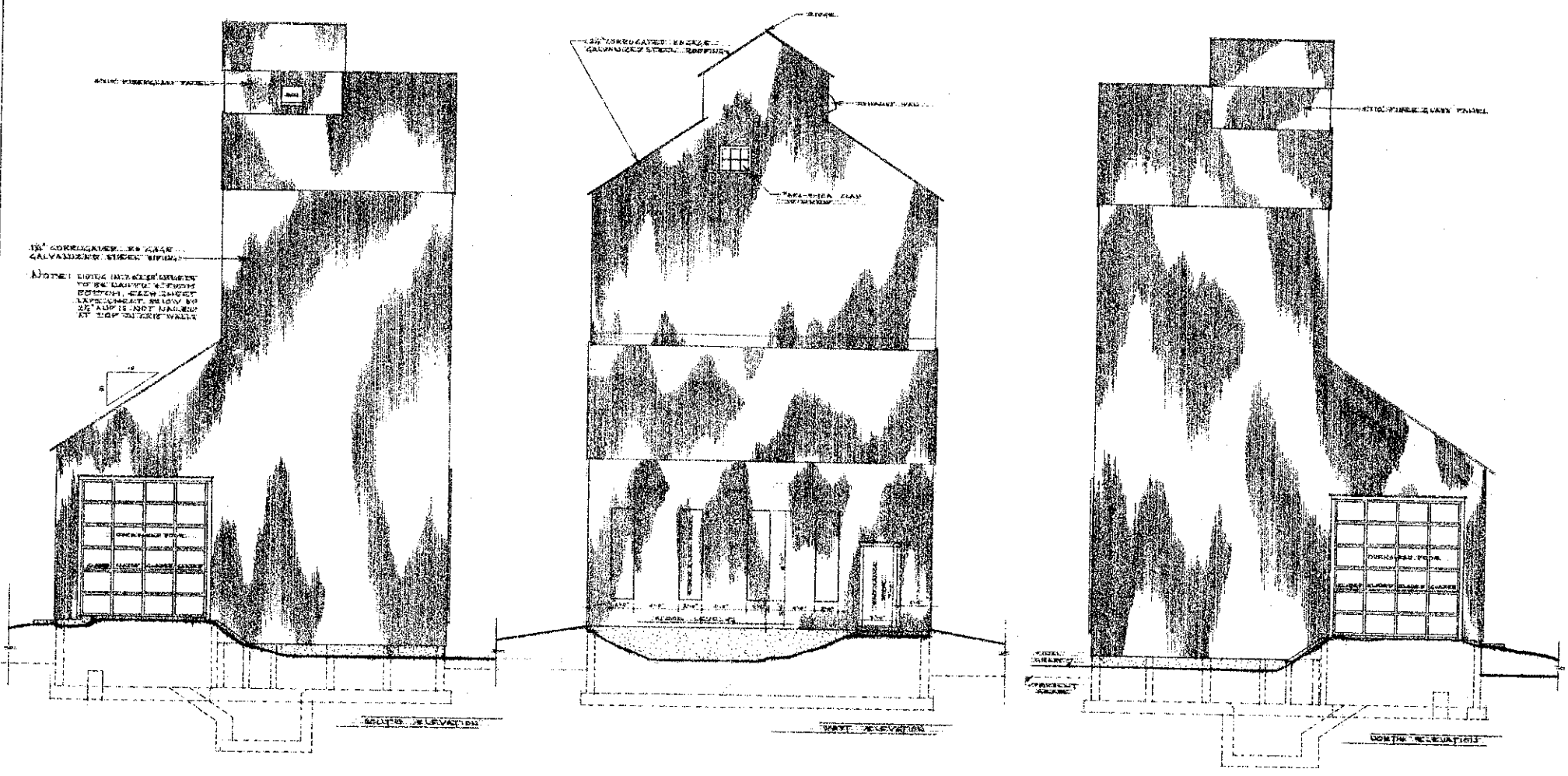
GENERAL DETAIL

NORTH DAKOTA STATE UNIVERSITY
 DEPARTMENT OF ARCHITECTURE & CIVIL ENGINEERING
 ARCHITECTURAL ENGINEERING DEPARTMENT
 GRAND FORK, NORTH DAKOTA
 14500 BUSHY GRASS BLVD
 6041 - 6042 - 6043 - 6044 - 6045
 6046 - 6047 - 6048 - 6049 - 6050



GENERAL PLAN - LABORATORY BUILDING

ARIZONA STATE UNIVERSITY
 DEPARTMENT OF AGRICULTURE & MECHANICAL ENGINEERING
 AGRICULTURAL EXPERIMENTAL STATION
 AGRICULTURAL MECHANICAL ENGINEERING DEPARTMENT
 TUCSON, ARIZONA
 JACOB BUSHEL, CHIEF ENGINEER
 EDWIN B. BROWN, ARCHITECT
 TUCSON, ARIZONA
 1916



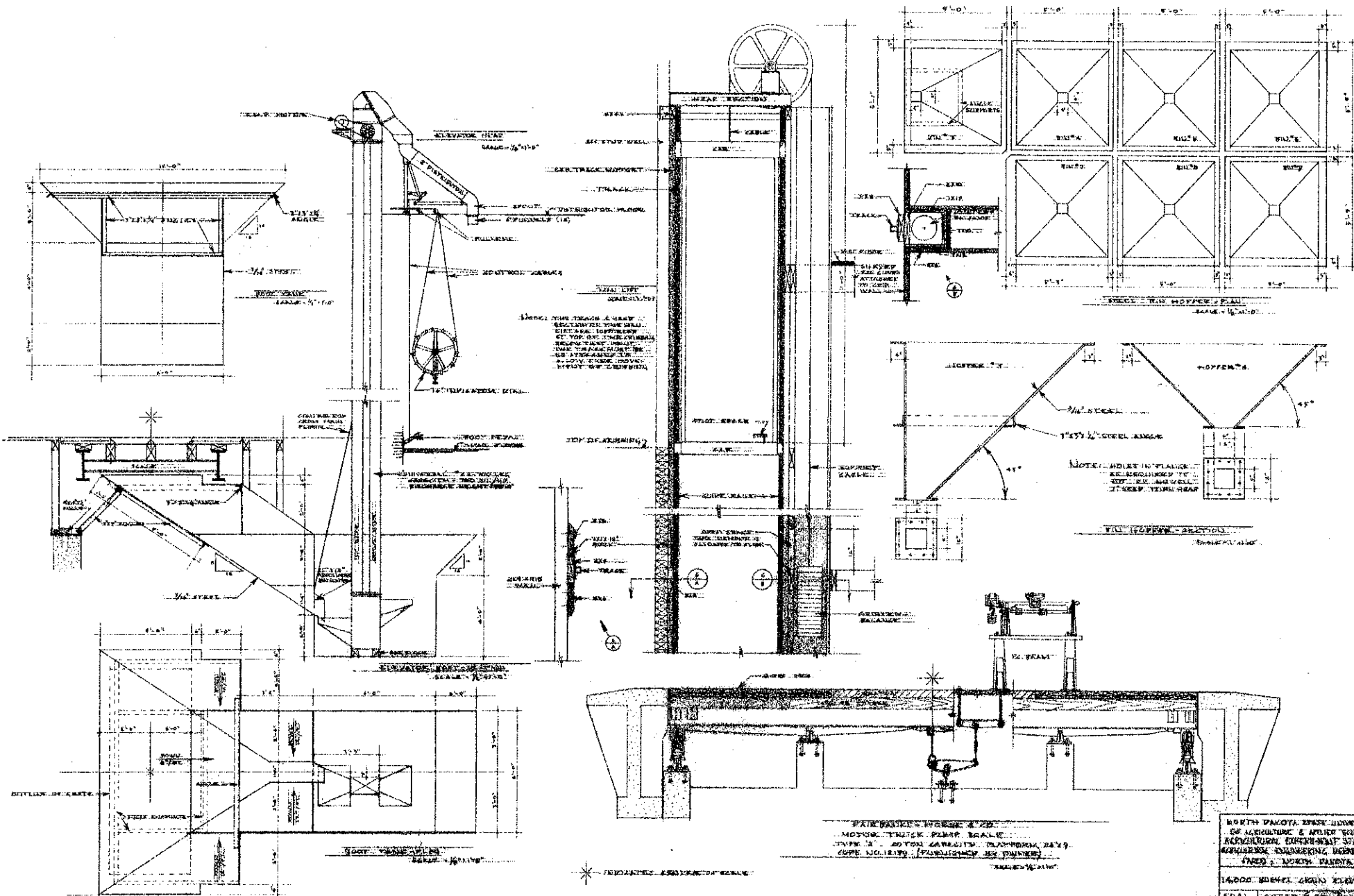
SCALE ON THIS SHEET = 1/4" = 1'-0"

ELEVATIONS

NORTH DAKOTA STATE UNIVERSITY
 DEPARTMENT OF AGRICULTURE & FORESTRY SCIENCE
 AGRICULTURAL EXPERIMENT STATION
 AGRICULTURAL ENGINEERING DEPARTMENT
 FARGO - NORTH DAKOTA

14000 BURNEL GRAY ELEVATION

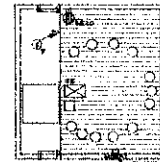
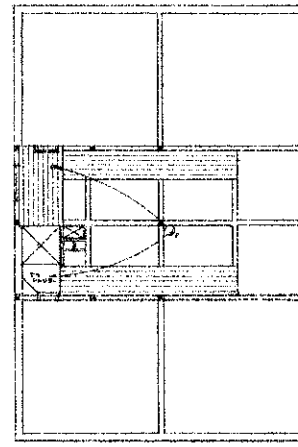
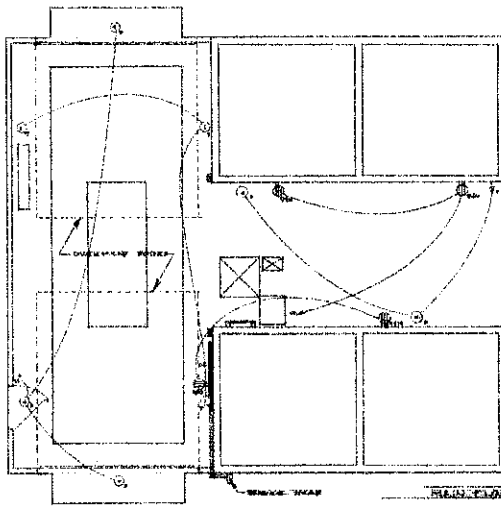
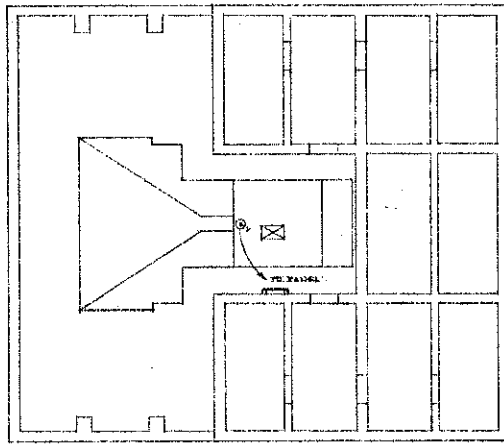
1930



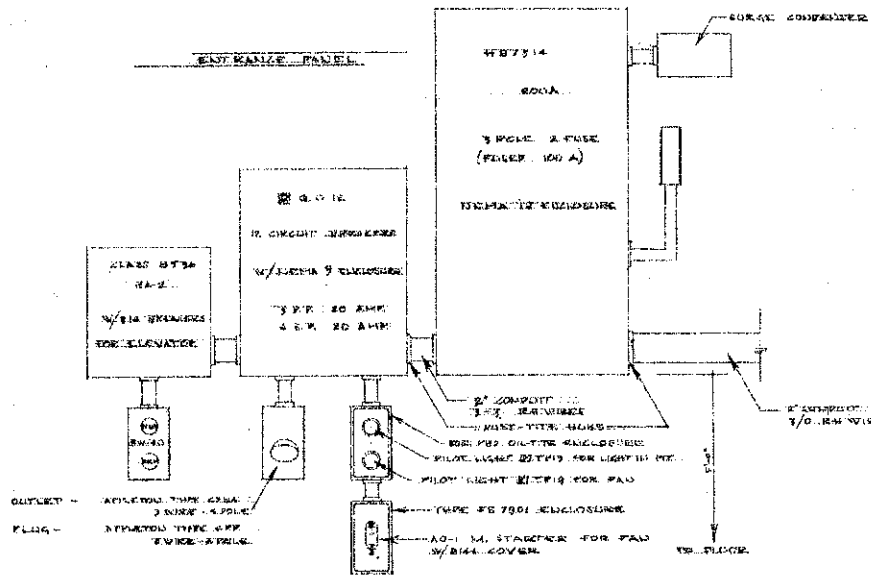
NORTH DAKOTA STATE UNIVERSITY
 OF AGRICULTURE & MECHANICAL ENGINEERING STATION
 AGRICULTURAL ENGINEERING DEPARTMENT
 FARGO, NORTH DAKOTA

14,000 BUSHEL GRAIN ELEVATOR
 NO. 14
 AS BAK. PLAN NO. 14

NOTE: THIS DRAWING IS THE PROPERTY OF THE UNIVERSITY OF AGRICULTURE & MECHANICAL ENGINEERING STATION, NORTH DAKOTA STATE UNIVERSITY. IT IS TO BE KEPT IN THE OFFICE OF THE STATION AND NOT TO BE LOANED OR REPRODUCED WITHOUT THE WRITTEN PERMISSION OF THE STATION.



- PANEL SPECIFICATIONS
- 1 LIGHTING OUTLETS
 - 2 LIGHTING OUTLETS
 - 3 LIGHTING OUTLETS
 - 4 LIGHTING OUTLETS
 - 5 VENTILATING FAN
 - 6 CHARGE CIRCUIT
 - 780 ELEVATOR LOG MOTOR
 - 9410 POWER OUTLETS
 - 0412 POWER OUTLETS



- PLAN SYMBOLS
- O₁ STENCIL ROOM w/ FAN & HYDRA
 - O₂ FACILITY LIGHT DISPLAY
 - STRENGTH STATION
 - L FACILITY SIGNAL SYSTEM
 - ⊕ FACILITY POWER OUTLET 75-4P
 - ENTRANCE PANEL

ELECTRICAL SYSTEM

NORTH CAROLINA STATE UNIVERSITY
DEPARTMENT OF ELECTRICITY & POWER ENGINEERING
POWER SYSTEMS DIVISION
Raleigh, N.C. 27695

WEDG BUSH & COMPANY
100 N. SHAW ST.
RALEIGH, N.C. 27601
TEL. 341-4000