

North Dakota Tree Selector

Scientific Name: *Salix alba*

Family: Salicaceae (Willow)

Hardiness: Zone 2

Leaves: Deciduous

Plant Type: Tree

Growth

Rate: Fast

Mature Height: >45'

Longevity: Long

Power Line: No

Ornamental

Flowers: Inconspicuous

Fruit: n/a

Fall Color: Yellow

White Willow

Description

A large, low-branching tree forming a broad, spreading round-topped crown. One of the first to leaf out in spring and last to drop leaves in autumn. Native to Eurasia. The largest tree in North Dakota is 75 feet tall with a canopy spread of 54 feet.

Preferences

Light: Full sun to partial shade.

Water: Does well on moist sites and survives extreme flooding. Does not tolerate drought.

Soil: Performs best on well drained, moist soils and along stream beds or wetlands.

Comments

Several cultivated varieties are available including:

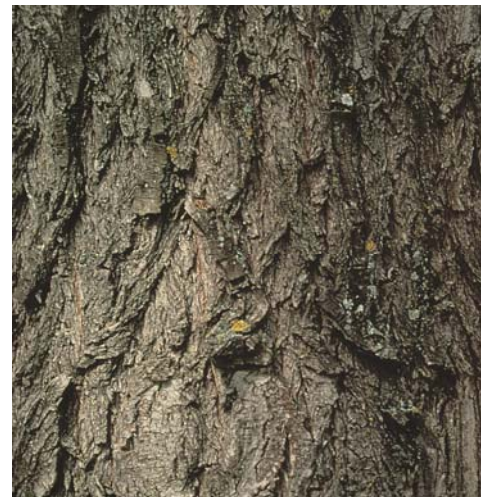
Flame willow - Dense form with very attractive orange-reddish twigs on new growth. May be a hybrid.

Redstem willow - Reddish new twigs, less spreading than other varieties.

Golden willow - Yellow-twigged selection.

Weeping Golden Willow - Popular weeping specimen tree in yards, but very messy due to twig drop.

Credits: Tree Selector Website, North Dakota Tree Handbook.



NDSU

www.ag.ndsu.edu/tree-selector

NDSU does not discriminate in its programs and activities on the basis of age, color, gender expression/identity, genetic information, marital status, national origin, participation in lawful off-campus activity, physical or mental disability, pregnancy, public assistance status, race, religion, sex, sexual orientation, spousal relationship to current employee, or veteran status, as applicable. Direct inquiries to Vice Provost for Title IX/ADA Coordinator, Old Main 201, NDSU Main Campus, 701-231-7708, ndsuoaaa@ndsu.edu. This publication will be made available in alternative formats for people with disabilities upon request, 701-231-7881.