



PEANUT BUTTER ROLLS

- 1 whole-wheat tortilla
- 2 Tbsp. peanut butter
- 1 banana

Coat the middle of the tortilla with the peanut butter. Place the peeled banana on top of the tortilla. Fold the tortilla into a wrap shape and cut into small pieces resembling sushi rolls. Serve immediately.

Makes one serving. Per serving: 450 calories, 20 g fat, 61 g carbohydrate, 7 g fiber, 320 mg sodium

GROUND BEEF TACOS

- 1 lb. ground beef
- Cooking spray
- 1 pkg. taco seasoning
- 4 whole-wheat tortillas
- Toppings:
 - ½ c. lettuce
 - ½ c. shredded cheddar cheese
 - 1 c. salsa



Coat the skillet with cooking spray. Thoroughly cook the ground beef in a skillet over medium-high heat. Add the taco seasoning packet to the beef according to the directions of package. In a warm taco shell, add beef, salsa, lettuce and cheese.

Makes four servings. Per serving: 450 calories, 18 g fat, 33 g carbohydrate, 2 g fiber, 1,190 mg sodium

Julie Garden-Robinson
Food and Nutrition Specialist

eat smart. play hard. together.
For more information, visit www.ndsu.edu/eatsmart.

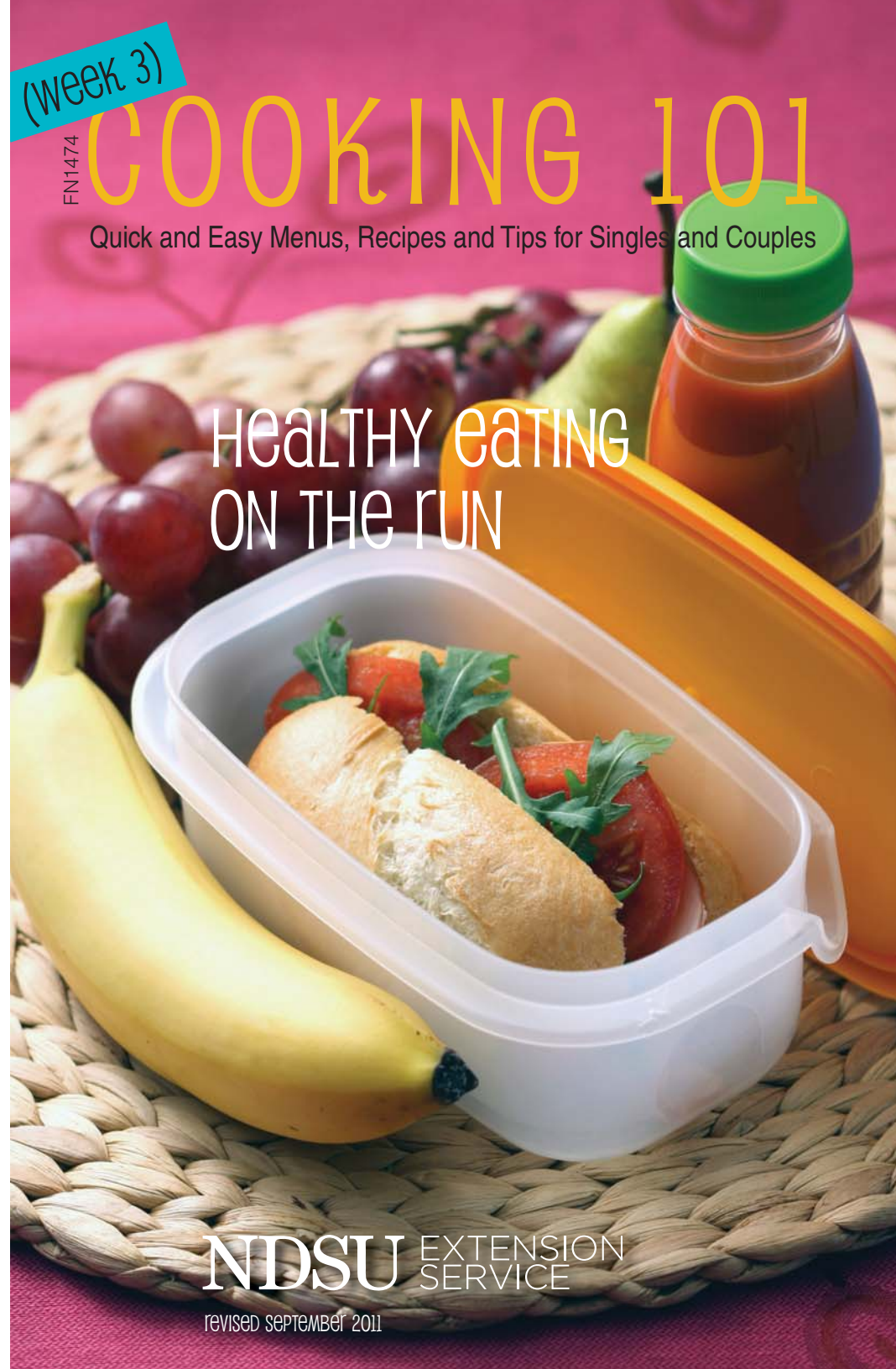
NDSU Nutrition Education in the Community Students (2010): **Joan Nagel**, Student Dietitian, Lead student writer; **Leah Gramlow**, Student Dietitian; **Katie Myrold**, Student Dietitian

The NDSU Extension Service does not endorse commercial products or companies even though reference may be made to tradenames, trademarks or service names. NDSU encourages you to use and share this content, but please do so under the conditions of our Creative Commons license. You may copy, distribute, transmit and adapt this work as long as you give full attribution, don't use the work for commercial purposes and share your resulting work similarly. For more information, visit <http://www.ag.ndsu.edu/agcomm/creative-commons>.

For more information on this and other topics, see www.ag.ndsu.edu

County commissions, North Dakota State University and U.S. Department of Agriculture cooperating. North Dakota State University does not discriminate on the basis of age, color, disability, gender expression/identity, genetic information, marital status, national origin, public assistance status, sex, sexual orientation, status as a U.S. veteran, race or religion. Direct inquiries to the Vice President for Equity, Diversity and Global Outreach, 205 Old Main, (701) 231-7708. This publication will be made available in alternative formats for people with disabilities upon request, (701) 231-7881.

2M-5-10, 2M-4-11



(week 3)

FN1474

COOKING 101

Quick and Easy Menus, Recipes and Tips for Singles and Couples

HEALTHY eating ON THE RUN

NDSU EXTENSION SERVICE

REVISED SEPTEMBER 2011

Cost and the amount of time you have to cook probably affect what you decide to eat. Think about nutrition, too. Food provides your body with the energy it needs to function and the nutrients it needs to perform well.

POP QUIZ:

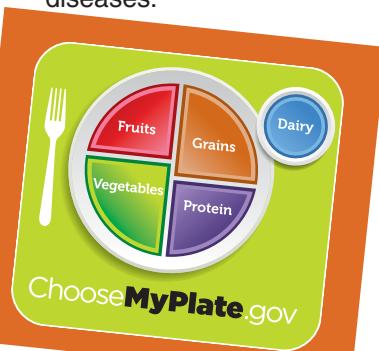
WHAT DO YOU KNOW already?

(The answers are on page 5.)

1. True or False: You can enter your daily diet into www.choosemyplate.gov and have its nutritional content analyzed.
2. True or False: Every person needs the same amount of calories, nutrients and physical activity to maintain health.
3. True or False: You will have the most bone mass when you are in your late teens to early 20s.
4. Which of the following vitamins helps your body absorb iron?

| | |
|--------------|--------------|
| a. Vitamin A | c. Vitamin C |
| b. Vitamin B | d. Vitamin K |
5. What is the daily recommended amount of iron for women in milligrams (mg)?

| | |
|----------|----------|
| a. 9 mg | c. 31 mg |
| b. 18 mg | d. 43 mg |
6. True or False: A diet high in fiber can lower your cholesterol and reduce your risk for certain diseases.



MYPLATE, YOUR NEW BEST FRIEND

Remember learning in elementary school about a food pyramid that was shaped, well, like a pyramid? The rules for following this pyramid were easy: Eat the most from foods on the bottom and eat the least from foods on the top. Everyone, regardless of gender, size or activity level, had the same pyramid.

The latest diet advice is arranged with a new food icon called MyPlate. It shows the different proportions for each food group and is based on individuals' needs. Check out www.choosemyplate.gov to learn what your food needs are. These are just a few of the cool interactive tools this site provides:

- **My Foodpedia:** Enter the name of a food to learn how many calories it contains, and the food group in which it belongs.
- **MyPlate Daily Food Plan:** Find out how many calories and how many servings of each food group you should be eating each day.
- **Food Planner:** Plan a menu and find out how many calories and servings of each food group it contains.
- **Food Tracker:** Keep a daily log of your diet and exercise to view progress.



CHICKEN STIR-FRY

- 4 small chicken breasts
- 1 pkg. stir-fry vegetables
- Cooking spray
- ¼-½ c. teriyaki sauce (reduced-sodium)
- 2 c. brown rice

Prepare the brown rice as the package indicates. Cut chicken into bite-sized pieces. While the rice is cooking, add cooking spray to the skillet and cook the chicken. When chicken is fully cooked, add the package of vegetables to the pan. Add sauce to the vegetables and chicken when vegetables are tender. Serve the chicken and vegetables over brown rice.

Makes four servings. Per serving: 330 calories, 3 g fat, 44 g carbohydrate, 4 g fiber, 400 mg sodium



SLOW COOKER CHICKEN NOODLE SOUP

- 2 c. cooked chicken, chopped
- 1½ c. frozen vegetables (carrots, peas, onions, whatever you like)
- 2 14-oz. cans low-sodium chicken broth
- 1 11-oz. can condensed cream of mushroom soup (with roasted garlic)
- Salt and pepper to taste
- ½ tsp. thyme
- 1 c. pasta of choice

Cut the chicken breast into small pieces. Place chicken into slow cooker with the carrots, onions and peas. Stir in the broth and mushroom soup. Season with pepper and salt. Cover the slow cooker and cook on high for three to four hours or on low for eight to nine hours. To maintain high-quality pasta, cook the pasta in a separate pan on the stove and stir in cooked pasta five minutes before the soup is ready to serve. Serve with whole-wheat crackers.

Makes four servings. Per serving: 290 calories, 3.5 g fat, 34 g carbohydrate, 3 g fiber, 1,190 mg sodium

RECIPES

KEY TO ABBREVIATIONS

| | |
|--------------------|-----------------|
| tsp. = teaspoon | pkg. = package |
| Tbsp. = tablespoon | g = grams |
| c. = cup | mg = milligrams |
| oz. = ounce | lb. = pound |

QUICK TIP

Freeze leftovers
in air-tight containers
in meal-size
amounts.

EASY SPAGHETTI

- 1 lb. ground beef
- 1 jar spaghetti sauce
- ½ box of dry spaghetti noodles
(preferably whole wheat)

Prepare the pasta as the package indicates. While noodles are cooking, brown the beef in a skillet and drain excess oil when done. Add the spaghetti sauce to beef and let simmer for 10 minutes. Top pasta with spaghetti sauce to serve.

Makes six servings. Per serving: 210 calories, 5 g fat, 26 g carbohydrate, 4 g fiber, 680 mg sodium



BAGEL PIZZA

- 1 wheat bagel
- 2 Tbsp. spaghetti sauce
- ¼ c. shredded cheese

Cut the bagel in half. Spread each half with 1 tablespoon spaghetti sauce

Top with cheese. Microwave on high, uncovered, one to 1½ minutes or until cheese is melted.

Makes one serving. Per serving: 310 calories, 12 g fat, 42 g carbohydrate, 7 g fiber, 390 mg sodium



THE NEGLECTED NUTRIENTS



Imagine you are planning your grocery list. You know you have limited time to prepare meals and snacks each day.

Many people struggle to make healthful food choices with today's busy schedules. The following is a list of some very important but often neglected nutrients for good health. See the ways to add foods rich in these nutrients to your menus:

CALCIUM: Calcium helps build strong bones, and peak bone mass is reached by age 30. Good calcium intake now can help lower the chances of developing osteoporosis, a bone disease that makes bones more likely to break. And not only is calcium good for bone health, it also can help the body by aiding in blood clotting and nerve and muscle function. Milk, cheese and yogurt are great sources of calcium. Males and females ages 19 to 30 should aim for 1,000 milligrams daily to reach the recommend amounts.

IRON: Iron helps support growth and moves oxygen from the lungs to the rest of the body. Iron is found in lean meats and iron-fortified cereals, so start the day with an iron-fortified cereal and glass of orange juice or an orange. The vitamin C found in orange juice helps your body absorb the iron so it can be used. Try to have lean meats or dark leafy greens for lunch and dinner to reach the 18 milligrams of iron recommended for women and 8 milligrams for men.

FIBER: Fiber is important for the digestive system. Some types of fiber also can help lower cholesterol and prevent disease. Fiber is found in fruits, vegetables and whole grains, so enjoy more whole-grain products and try swapping high-fat snack foods with apples, carrots or any other favorite fruits and vegetables. Women should try to get 25 grams of fiber daily and men should aim for 38 grams.

WEEKLY MENU PLANNER – week 3

*indicates recipe is provided

| | Breakfast | Lunch | Dinner | Snacks |
|--------|--|---|---|--|
| MON. | <ul style="list-style-type: none"> Apple slices Low-fat or fat-free yogurt Granola bar Skim milk | <ul style="list-style-type: none"> Scrambled egg on bagel Salsa Carrots Grapes Skim milk | <ul style="list-style-type: none"> Broiled or grilled chicken breast Microwaved frozen veggies Brown rice Skim milk | <ul style="list-style-type: none"> Pretzels Banana Celery |
| TUES. | <ul style="list-style-type: none"> Whole-wheat bagel topped with peanut butter Banana Skim milk | <ul style="list-style-type: none"> Tortilla with melted cheese Lettuce salad Hard-cooked egg Skim milk | <ul style="list-style-type: none"> Ground Beef Taco* Orange Skim milk | <ul style="list-style-type: none"> Granola bar |
| WED. | <ul style="list-style-type: none"> Cereal Orange Skim milk | <ul style="list-style-type: none"> Bagel with peanut butter Apple Carrots Skim milk | <ul style="list-style-type: none"> Scrambled eggs with salsa Grapes Skim milk | <ul style="list-style-type: none"> Pretzels Celery |
| THURS. | <ul style="list-style-type: none"> Low-fat or fat-free yogurt Granola bar Skim milk | <ul style="list-style-type: none"> Turkey wrap (tortilla with turkey, lettuce and cheese) Grapes Skim milk | <ul style="list-style-type: none"> Chicken Stir-fry* Apple Skim milk | <ul style="list-style-type: none"> Banana Carrots |
| FRI. | <ul style="list-style-type: none"> Hard-cooked egg Toasted bagel Orange Skim milk | <ul style="list-style-type: none"> Peanut Butter Rolls* Carrots Celery Skim milk | <ul style="list-style-type: none"> Easy Spaghetti* Tossed salad Skim milk | <ul style="list-style-type: none"> Granola bar Apple |
| SAT. | <ul style="list-style-type: none"> Cereal Banana Skim milk | <ul style="list-style-type: none"> Bagel Pizza* Tossed salad Orange Skim milk | <ul style="list-style-type: none"> Grilled chicken wrap Microwaved frozen vegetables Skim milk | <ul style="list-style-type: none"> Granola bar Carrots |
| SUN. | <ul style="list-style-type: none"> Low-fat or fat-free yogurt Granola bar Orange Skim milk | <ul style="list-style-type: none"> Turkey salad (chopped turkey with celery, mayo) on on a bagel Carrots Skim milk | <ul style="list-style-type: none"> Slow Cooker Chicken Noodle Soup* Apple Skim milk | <ul style="list-style-type: none"> Pretzels Grapes |

GROCERY LIST

To save money, compare unit prices (price per ounce) on the store shelving.

Read through the recipes and check your supplies to see what and how much you need.

GRAINS

- 1 package whole-wheat bagels (6)
- 1 box spaghetti
- 1 box instant brown rice
- 1 package whole-wheat tortilla shells
- Whole-wheat pretzels
- 1 box of cereal (preferably whole grain)
- 1 package of granola bars

VEGETABLES

- Bag of romaine lettuce
- 1 package fresh stir-fry vegetables
- 1 package frozen vegetables
- 1 bag baby carrots
- 1 bag celery
- 1 jar (or can) spaghetti sauce
- 1 jar salsa

FRUIT

- 5 apples of choice
- 4 bananas
- 1 bag of grapes
- 5 oranges

DAIRY

- 1 gallon (or more) skim milk
- 1 bag shredded cheddar cheese
- 3 containers of low-fat or fat-free yogurt (flavor of choice)

MEAT/OTHER PROTEIN FOODS

- 2 pounds lean ground beef
- 1 bag frozen chicken breasts
- 1 dozen eggs
- 1 container peanut butter
- Deli turkey

CANNED/DRY GOODS, ETC.

- 1 packet taco seasoning
- 2 cans low-sodium chicken broth
- 1 can cream of mushroom soup (with roasted garlic)
- Teriyaki sauce
- Salad dressing (such as Ranch dressing)
- Cooking spray