

# Wimba Quick Reference Guide

Created 1/29/08 for EFNEP/FNP Users

## Technical assistance

866-350-4978

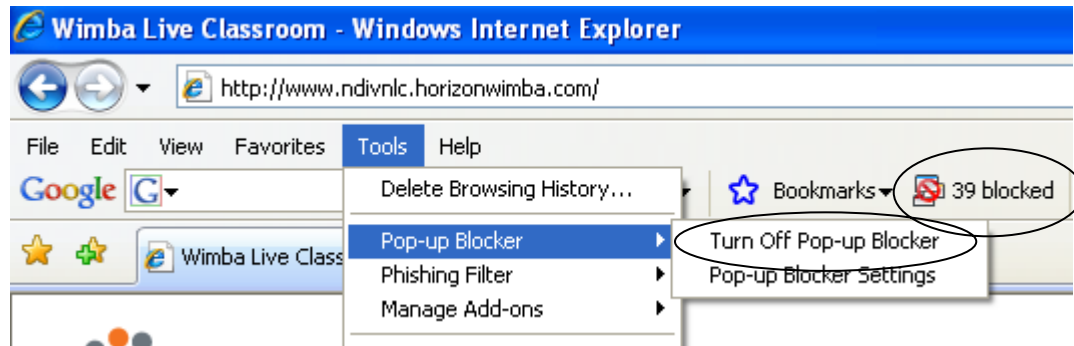
[www.wimba.com/technicalsupport](http://www.wimba.com/technicalsupport)

technicalsupport@wimba.com

## Getting Started: Running the Setup Wizard

1. Log onto: <http://www.ndivnlc.horizonwimba.com/>
2. Turn off pop-up blockers. Check for pop-up blockers on toolbars, browser settings, and under tools / pop-up blocker.

In this example, you can simply click on where it says “39 blocked” on the Google tool bar and it will change to say pop-ups okay. Under tools / pop-up blocker, click on where it says “turn off pop-up blocker.” If you are not able to find all of the pop-up blockers, the setup wizard will give you specific information on how to locate and turn them off.

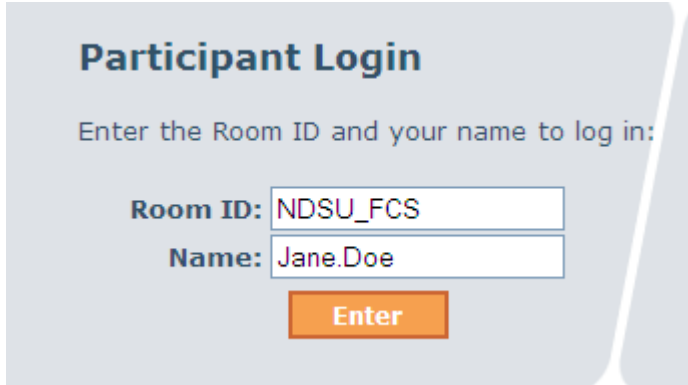


3. Make sure your headset is plugged in and run the Setup Wizard.



## Ready for Web Conferencing

Once you have run the setup wizard, you are ready for web conferencing. Click on "Participant Login."



**Participant Login**

Enter the Room ID and your name to log in:

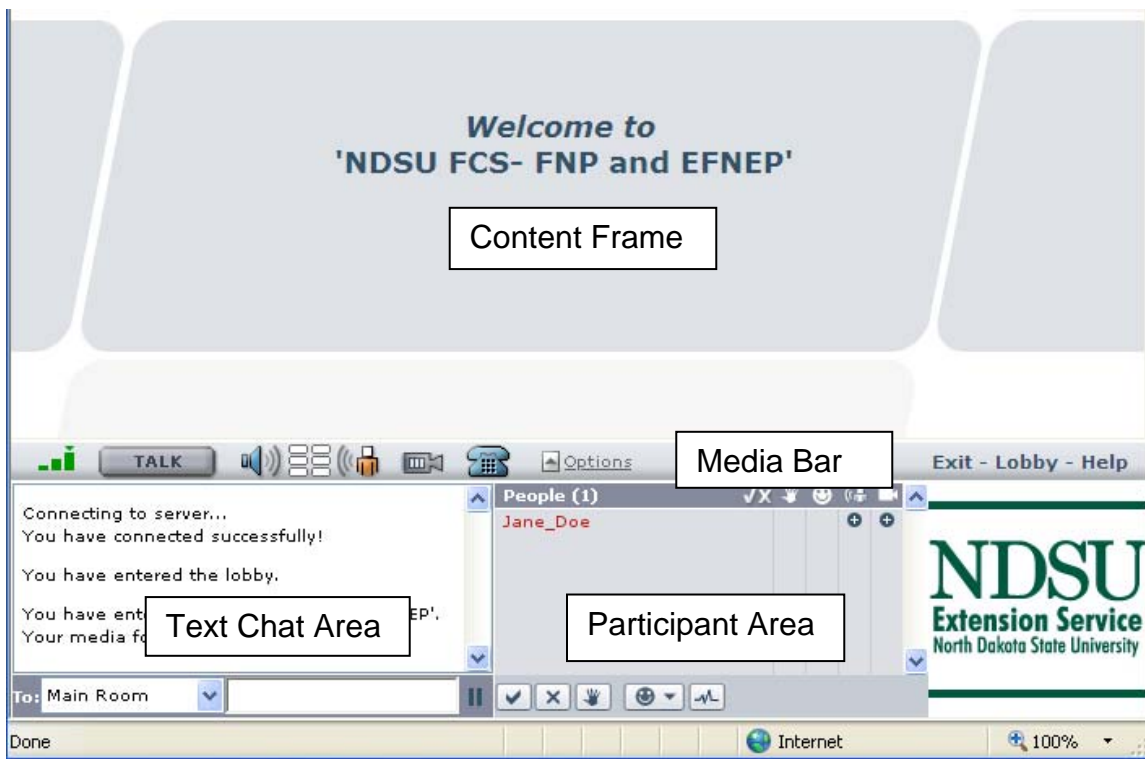
Room ID:

Name:

The Room ID is NDSU\_FCS  
The Name should be firstname.lastname.

Once you hit enter, it is like you have entered the lobby of the Family & Consumer Sciences virtual building. Next, you will want to enter a specific room.

Click on NDSU FCS – FNP and EFNEP. We will go through the different features during our first web conference. Here is what the interface will look like:



The screenshot shows the web conferencing interface with several labeled components:

- Welcome to 'NDSU FCS- FNP and EFNEP'**: The main title of the lobby.
- Content Frame**: A large empty area for content.
- Media Bar**: A toolbar at the top with icons for TALK, microphone, video, and other options.
- Text Chat Area**: A chat window on the left showing messages like "Connecting to server...", "You have connected successfully!", "You have entered the lobby.", and "You have entered the room".
- Participant Area**: A window on the right showing the name "Jane\_Doe" and a "People (1)" header.
- NDSU Extension Service North Dakota State University**: A logo on the right side of the interface.