

Emergency Management Overview



Visual 1

Emergency management is not the responsibility of just one agency; only a whole community can do a job of this magnitude. Every agency has something to contribute when they work together. Emergency management activities should be done in every community and state in the entire country to be effective. This program provides an overview of state and local emergency management agencies discusses the roles of emergency managers in disasters and lists potential roles for Extension staff and skills that may assist in dealing with the four phases of a disaster.



Visual 2

Emergency management can be characterized as the facilitation of organized planning, decision making and assignment of available resources to prevent, prepare, mitigate, respond to and recover from the effects of all hazards.



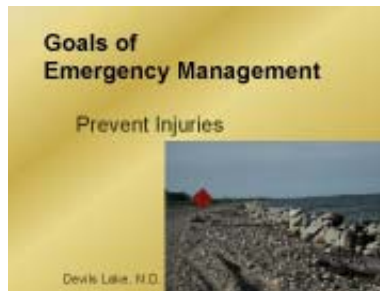
Visual 3

Emergency management has four basic goals:



Visual 4

Save Lives — Human life always is the first priority in a hazard; this includes the lives of citizens, first responders and especially vulnerable populations. Vulnerable populations may include but are not limited to senior citizens, young children and non-English speaking people who are most vulnerable in disasters.



Visual 5

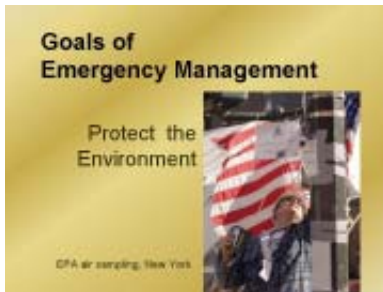
Prevent Injuries — Emergency management is responsible for developing plans for the community, which include storm shelters, warning procedures, response plans and encouraging people to have safe rooms and family plans in the home.



Visual 6

Protect Property — Emergency management strives to protect critical infrastructure within our communities. This infrastructure can include but is not limited to power facilities, water facilities, transportation routes and sources of economic stability in communities, including some private property.

- Investigations to determine the full nature and source of the threat
- Public health surveillance and testing processes
- Immunizations
- Isolation or quarantine
- Law enforcement operations aimed at deterring, preempting, interdicting, or disrupting illegal activity.



Visual 7

Protect the Environment — Emergency management also is responsible for taking precautions to protect the environment from the destructive forces of all hazards, which include fire, drought and chemical releases.

- **Preparedness** – Preparedness primarily is the act of providing information to the public about potential hazards BEFORE the disaster takes place.
- **Response** – Response is the action that takes place immediately FOLLOWING the onset of the hazard to attempt to preserve the social and physical structures, as well as meet a community’s immediate basic needs.
- **Recovery** – Recovery is the attempt to restore the community to a functioning state once the disaster is UNDER CONTROL or has lapsed.
- **Mitigation** – Mitigation is action taken AFTER a disaster to eliminate or reduce the impact of a hazard in the future.



Visual 8

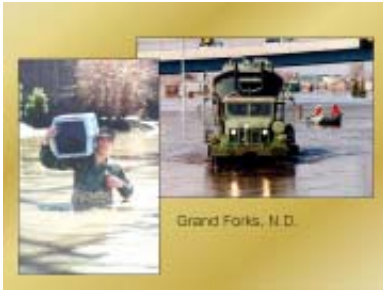
Five Phases of Emergency Management

- **Prevention** – Prevention happens when property and lives are protected by those that identify, deter or stop an incident from occurring. Activities that may include these types of countermeasures can include:
 - Heightened inspections
 - Improved surveillance and security operations



Visual 9

Disasters do happen everywhere. This photo shows residents of Fargo, N.D., sandbagging to protect homes during the Red River flood of 1997.



Visual 10

These photos also were taken in 1997 in Grand Forks, N.D. We must remember that pets also are affected by the impact of disasters.



Visual 13

Imagine that your community is devastated by a tornado similar to the one in Oklahoma City, Okla.

North Dakota Hazard Listing

Flood	Winter storm	Hazardous materials
Urban fire	Rural fire	Drought
Civil disorder/terrorism	Mass casualty	Dam failure
Critical material shortage	National security	Severe summer storms

Visual 11

There are 12 Potential Hazards for the State of North Dakota. The 12 potential hazards identified by the North Dakota Division of Emergency Management are: flood, winter storm, hazardous materials, urban fire, rural fire, drought, civil disorder/terrorism, mass casualty, dam failure, critical material shortage, national security and severe summer storms.



Visual 14

What kind of problems would your community face?

- Some Possible Problems**
- Loss of electricity
 - Loss of potable water
 - Disruption of transportation routes
 - Broken natural gas lines
 - Loss of telephone communication, including cellular service

Visual 15

Suggest impact on electricity, water, transportation and communication, etc.

Other Hazard Listing

Tropical Storm	Tsunami	Hazardous materials
Nuclear accidents	Earthquakes	Tropical depression
Volcanic eruptions	Wildfires	Extreme heat
Hurricane	Landslides	Multi-hazards

Visual 12

Other Hazard Listings — These are examples of hazards that you might see in other parts of the country as listed on the FEMA web-site.



Visual 16

Emergency management has a unique partnership in responsibility as a government agency.



Visual 17

Success in all four stages of emergencies/disasters depends on the cooperation and coordination of state, local, federal and private entities to ensure that communities and citizens are prepared and able to recover from an emergency/disaster.

Role of the Emergency Manager

- Coordinate the planning process
- Identify and analyze hazards
- Coordinate all components of the program, including fire and law enforcement services, emergency medical programs, social services, volunteers and other groups involved in emergency activities

Visual 20

Emergency management is responsible for coordinating plans, identifying and analyzing hazards and coordinating components of response and recovery operations such as fire and rescue, law enforcement, emergency medical services and others.

Local Government

At the local level whether county, city, town or other designation – it is the first line of official public responsibility for emergency management activity.

Jackson, Tennessee

Visual 18

Local government is the first line of public responsibility for the four phases of emergency management (preparedness, response, recovery and mitigation).

Role of the Emergency Manager

- Coordinate resources from all sectors before, during and after a disaster
- Manage activities relating to prevention, mitigation, preparedness, response and recovery from a disaster
- Ensure that all stakeholders are aware of potential threats to the community

Visual 21

Emergency management coordinates a variety of public and private resources before, during and after a disaster. Emergency management has the responsibility to ensure that all stakeholders are aware of potential hazards in the community, and to facilitate activities relating to preparedness, response, recovery and mitigation for those hazards.

Local Communities:

- Best understand potential hazards
- Evaluate available resources
- Are the site for emergency events
- Are responsible for the initial response in a disaster

Grand Forks, ND

Visual 19

Communities understand potential hazards best, as well as understanding community resources and deficits. Events are, by nature, local. The first line of defense or first response is at a local level.

Role of Extension Staff

- Emergency Operations
- Mitigation Planning and Projects
- Awareness

Visual 22

Extension staff has important skills to be used in forming an emergency operations plan for the state or local communities, and planning and implementing mitigation projects in the state, especially in rural areas. Extension staff also can be essential in spreading awareness of threats and their effects on citizens of our communities.

Role of Extension Staff

- Support to local emergency operations plans and functional areas
 - Damage assessment
 - Health and medical
 - Individual and family assistance

Visual 23

Extension staff can support the development of emergency operations plans by providing assistance in damage assessment (primarily agricultural), health and medical, and individual and family assistance (for communities and rural residents).

Role of Extension Staff

- Individual and family assistance
 - Support for emergency feeding
 - Information dissemination on disaster and emergency agricultural programs
 - Identify rural residents in need of services



Visual 26

Extension staff can assist individuals and families by supporting emergency feeding operations; disseminating information on disaster and emergency programs for families, farms and ranches; and identifying rural residents in need of services.

Role of Extension Staff

- Damage assessment
 - A system for assessing private and public property damage resulting from emergency or disaster situations
 - Agricultural losses
 - Private farm structures
 - Agricultural industry
 - USDA Flash Fax

Visual 24

A damage assessment is a system used on public and private property to estimate total damage resulting from a hazard or disaster. Extension staff has unique knowledge of agricultural crop losses, farm structures and agricultural industry using USDA flash fax.

Role of Extension Staff

- Disaster planning and projects
 - Provide practical, research-based information and educational programs to address critical issues facing individuals, families, agricultural producers, business operators and communities

Visual 27

Extension staff can provide practical, research-based information and educational programs to address critical issues facing individuals, families, agricultural producers, business operators and communities.

Role of Extension Staff

- Health and medical annex
 - Support vector and pest control through education and chemical applications
 - Provide assistance for animal health, environmental and medical response and recovery
 - Monitor changes in food supply

Visual 25

Extension staff can contribute to the health of our communities in many ways. Some of these ways are to support vector and pest control through education and chemical applications, and by providing assistance for animal health, environmental and medical response and recovery. Extension staff also may have contacts to monitor shifts or changes in the food supply from local producers.

Role of Extension Staff

- Disaster planning and projects
 - Provide programming for county citizens in the areas of family financial management, environmental concerns, housing, health and wellness, aging, foods and nutrition, parenting, and human development

Visual 28

Extension staff also may provide programming for county citizens in areas such as family financial management, environmental concerns, housing, health and wellness, aging, foods and nutrition, parenting, and human development.



Visual 29

Extension staff contributions also could include knowledge of livestock, water quality, waste management, financial planning and mental health issues.



Visual 31

County emergency managers and county Extension staff should try to combine resources to make our communities safer. A listing of county emergency managers is available on the North Dakota Division of Emergency Management Web site at www.state.nd.us/dem/local/emerg.htm.



Visual 30

Extension staff are the eyes and ears of rural communities, especially on animal and plant diseases such as hoof and mouth, mad cow (BSE), West Nile and anthrax.



Visual 32

Extension staff plays an important role in times of disasters and provide valuable services to emergency service personnel and the community. A relationship with your local emergency management staff can provide an excellent foundation to build safer and stronger community.



Visual 33

Thank you for your time and attention.