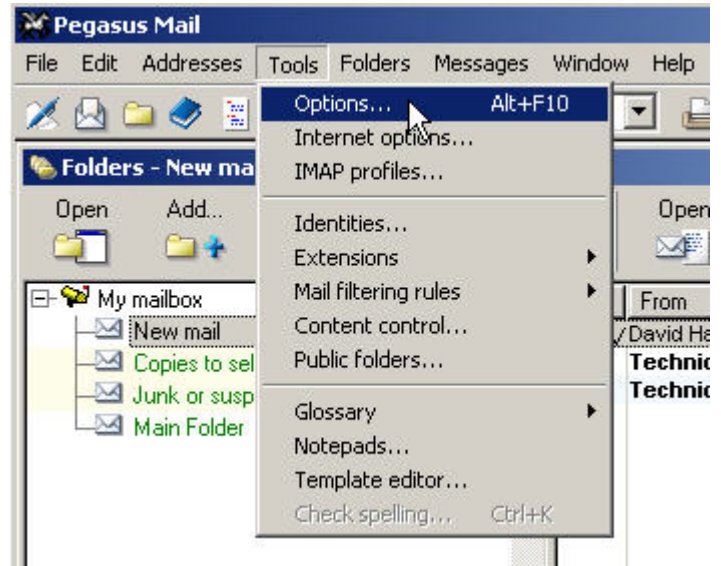
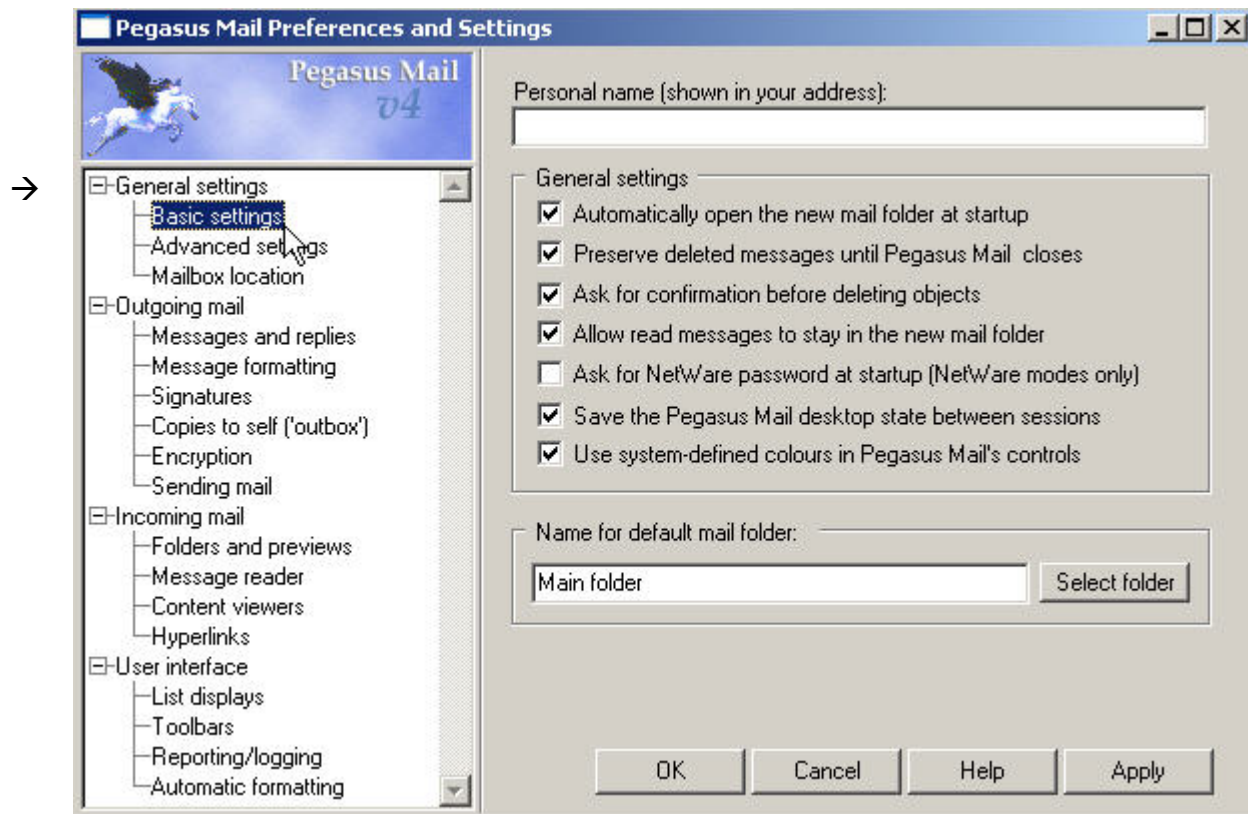


Configuration

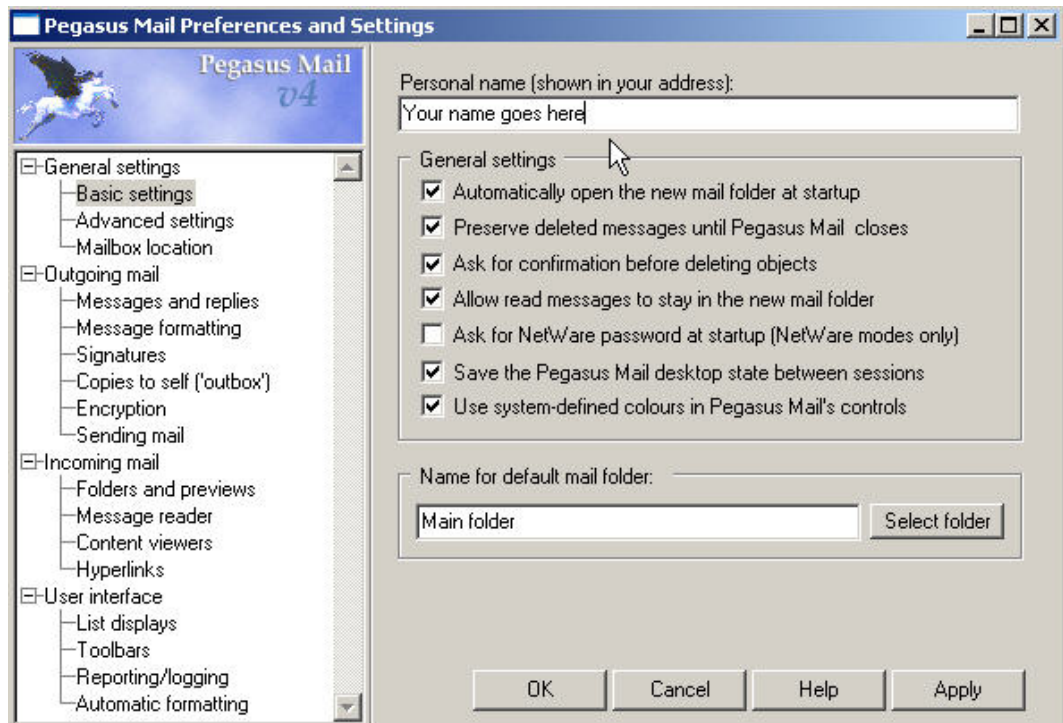
Go to the Menu Bar and left click once on **Tools**.
A drop menu appears, left click once on the **Options** item.



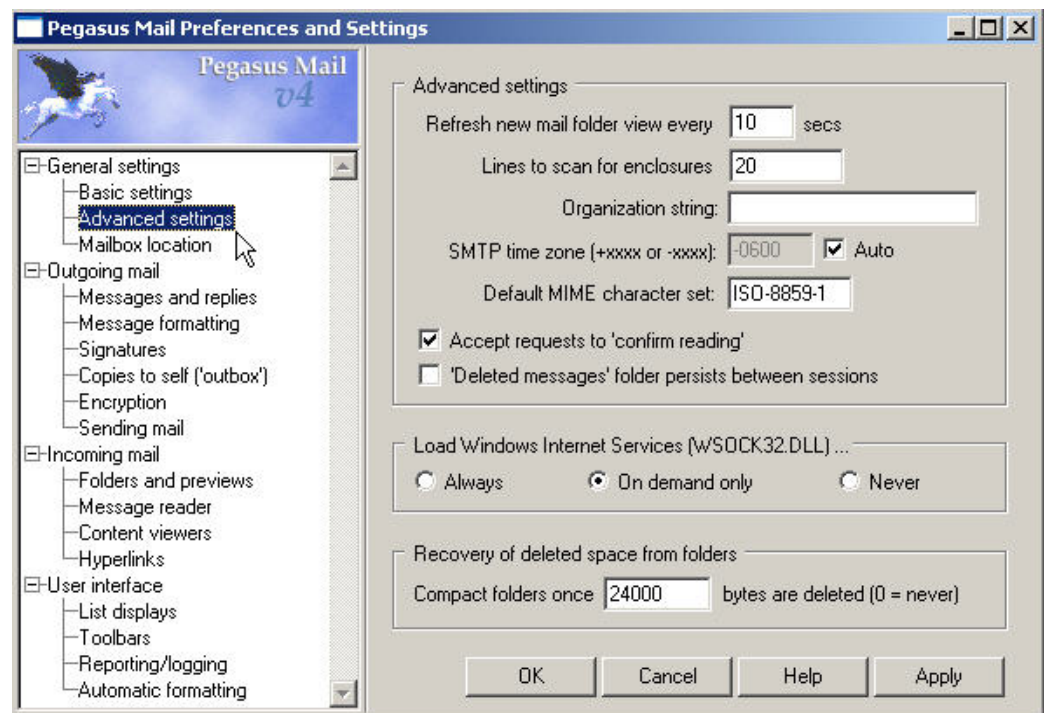
The Title Bar says it all. This is the **Preferences and Settings** window. The cursor defaults to the Basic Setting selection subheading under **General settings** and this is where we start.



The Basic Settings is highlighted on the left hand side. In the white text box, under Personal name, type your full name here (i.e. John Person). Place check marks in the following boxes as shown below.



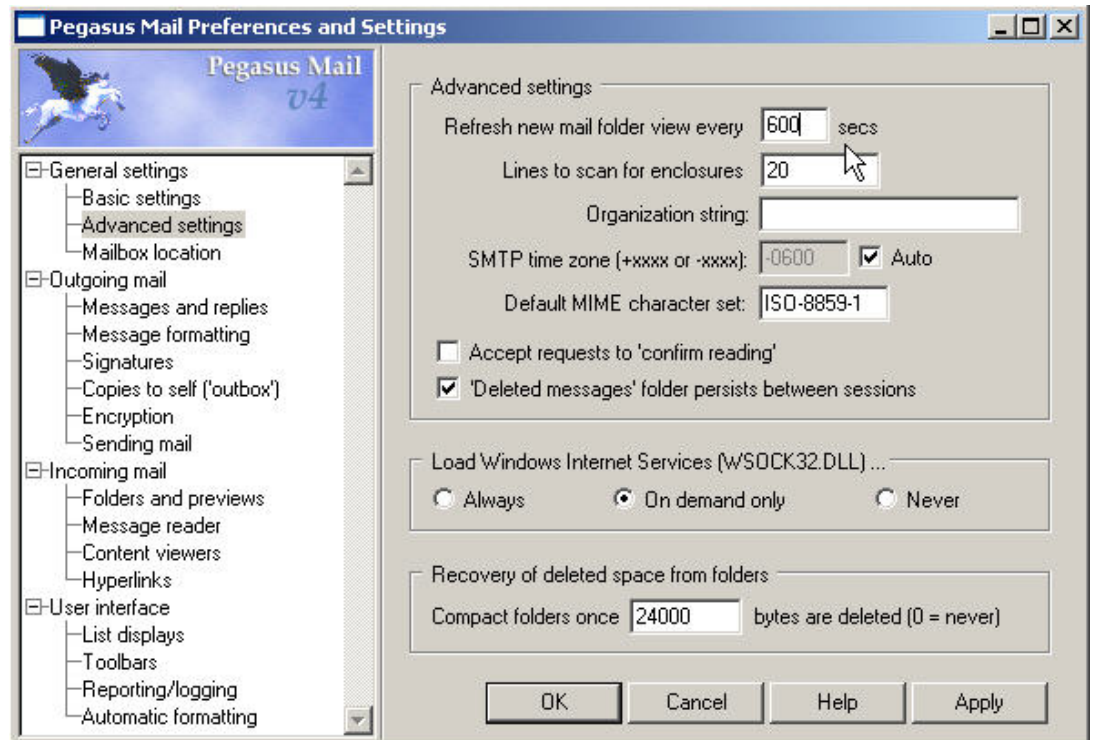
Go to the left hand side of the window and left click once on the **Advanced settings** selection.



As shown to the right, type in 600 seconds (ten minutes) as the time Pegasus checks for email. This helps to reduce the load on the email server.

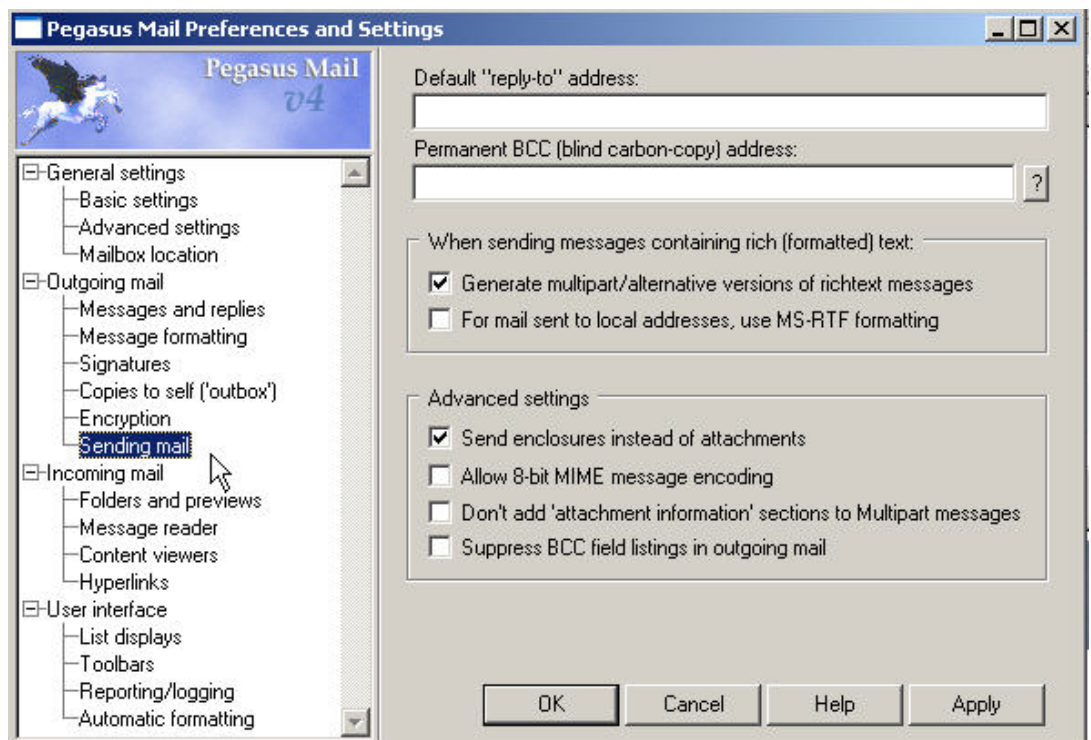
Also, you can uncheck the Accept requests to 'confirm reading' and place a check mark in the 'Deleted messages' folder persists between sessions. This is good for times when you may undelete a message by error as long as the current Pegasus

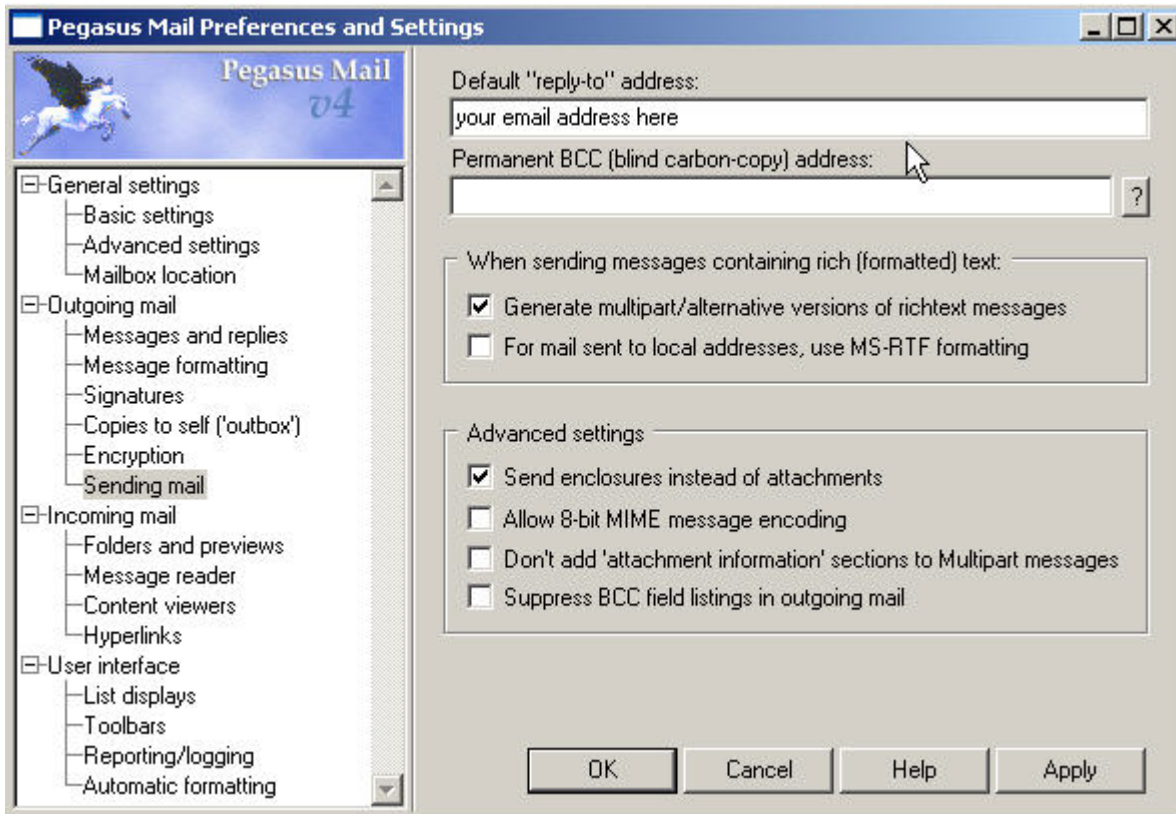
sessions remains open. Once you close Pegasus the Deleted messages folder is gone.



Go to the left hand side of the window and left click once on **Sending mail** (under the Outgoing mail heading).

The right hand side changes.



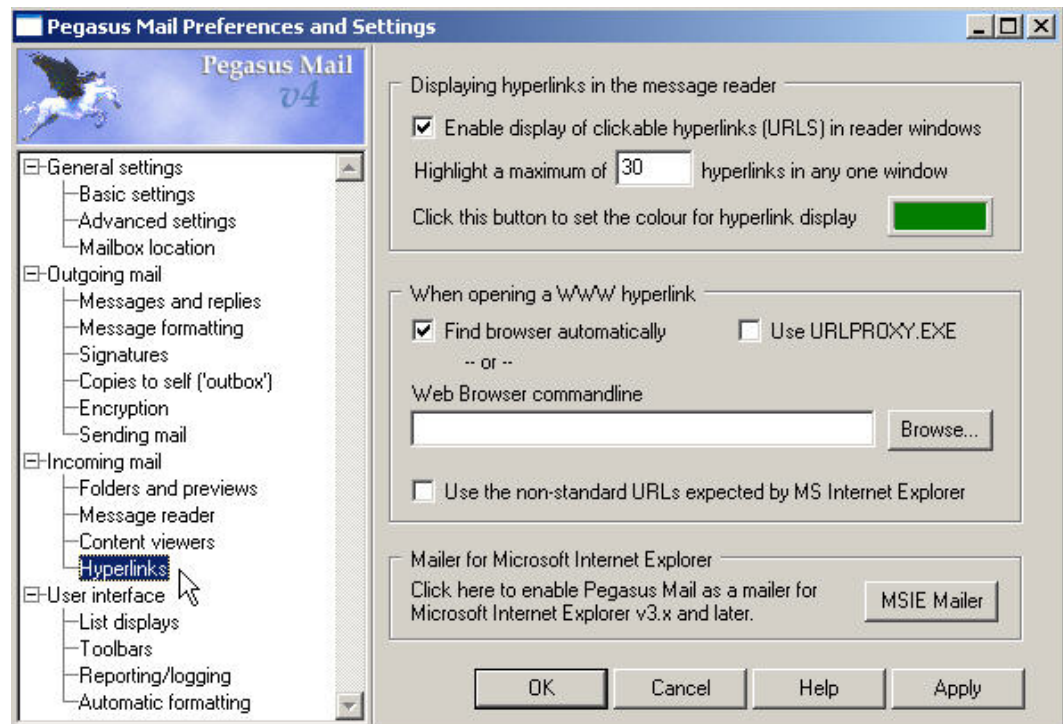


Type in your full email address in the white text box under the **Default ‘reply-to’ address.**

Everything else is left as is.

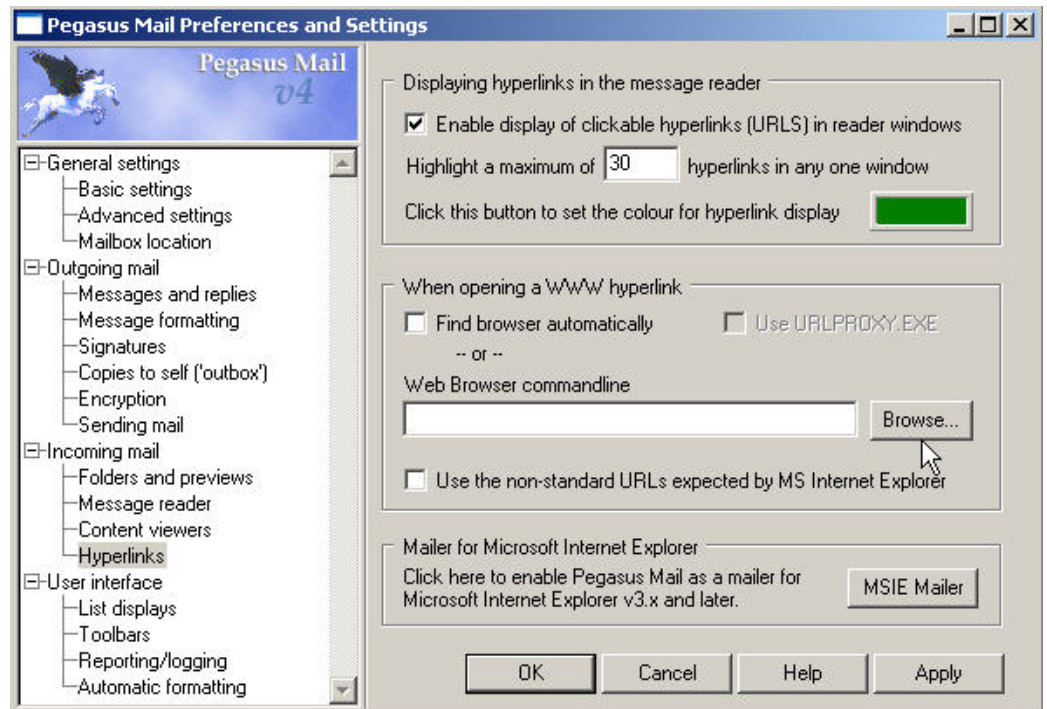
Go back to the left hand side of the window and left click once on **Hyperlinks** (under the Incoming mail heading).

We are going to hard code the Internet browser link so that when you receive a link in your email Pegasus will automatically use Internet Explorer.



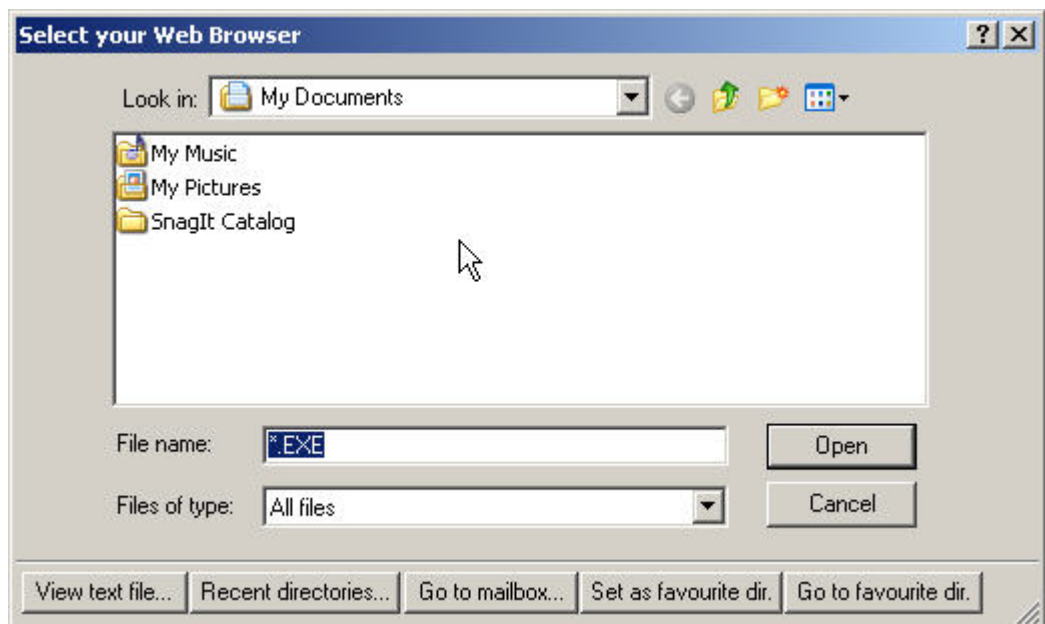
On the right hand side of the window, uncheck Find browser automatically.

Go to the **Browse** button and left click once.

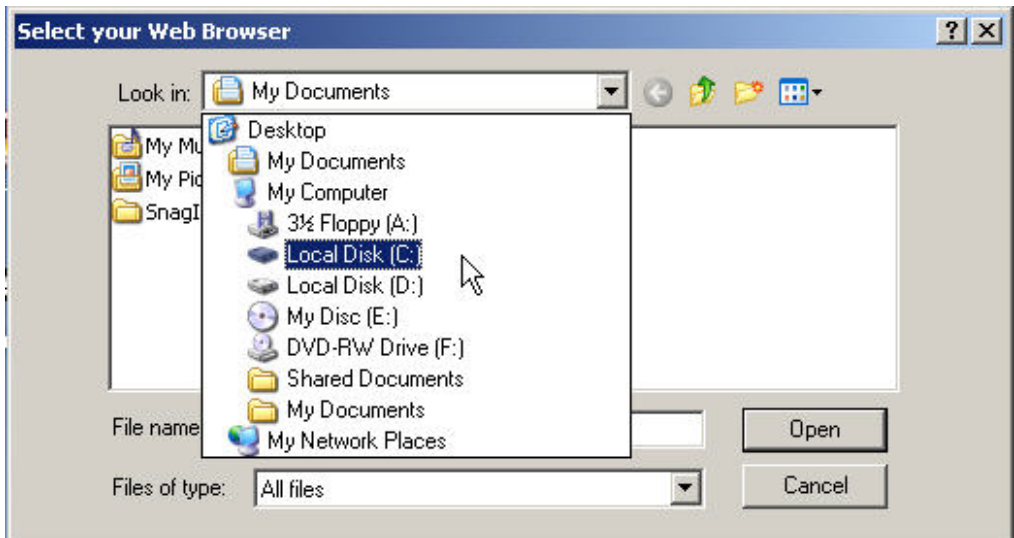


The Title Bar will show Select your Web Browser. The contents may be different but that is okay.

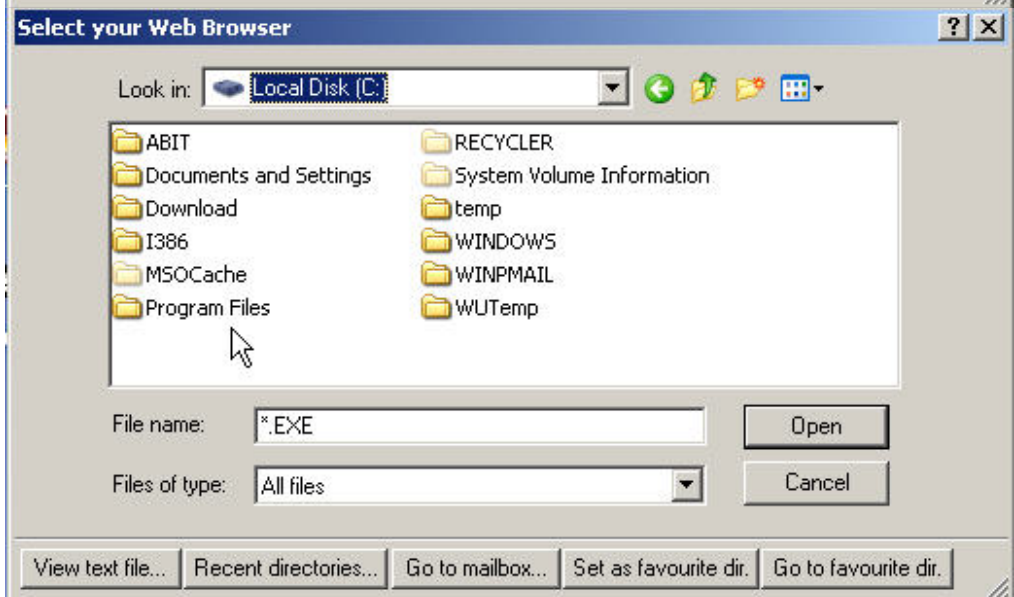
Go to the white text box. (**Look in** My Documents). At the end (to the right of the text box) is a little black arrow that points down. Left click once on the arrow.



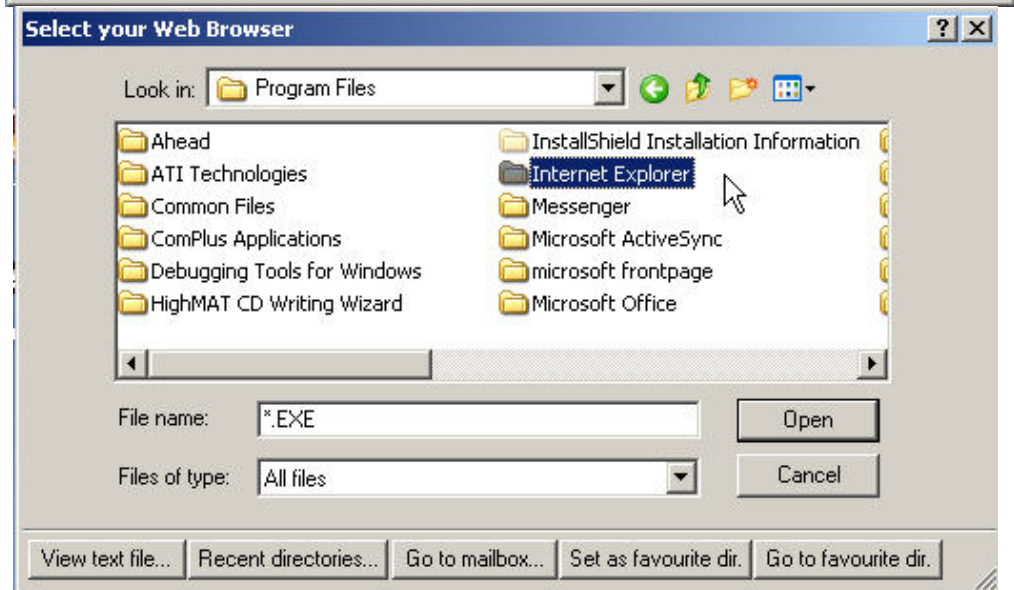
A drop menu appears.
Double left click on the
Local Disk (C) to bring
this into the text box.



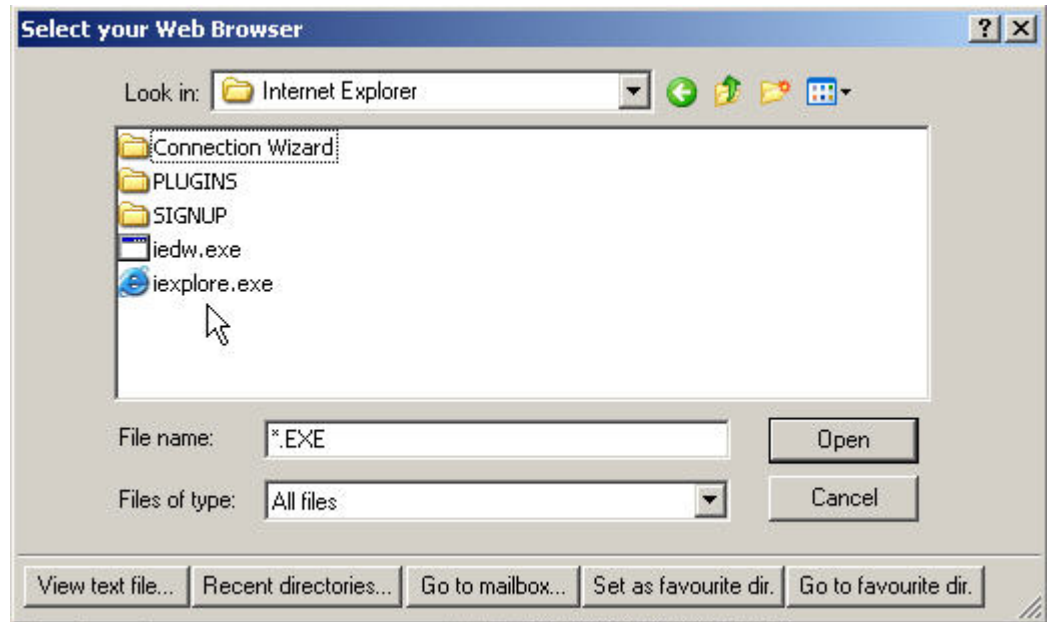
Now the folders for the
'C' drive appear. Locate
the yellow folder
Program Files and
double-left click on that
folder.



The folder listing for the
Program Files appear.
Locate the **Internet
Explorer** folder and
double-left click on that
folder.



The contents of the Internet Explorer folder appears. Locate the file → [iexplore.exe](#). Double-left click on this file.



You are brought back to the Mail Preferences and Settings window.

You will now see, on the right side, the path that leads to Internet Explorer.

