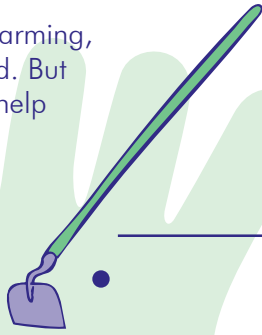


From **Hand Tools** to **Big Machines**

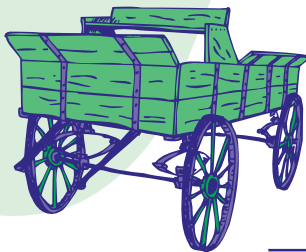
When people first started farming, they did everything by hand. But today, farmers rely on the help of machines.

Name each hand tool and machine. Then draw a line from the hand method to the machine used today.



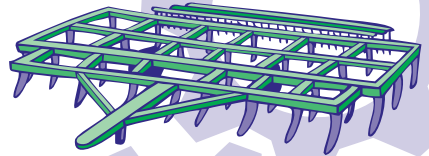


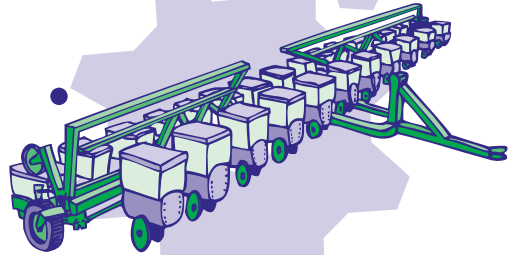












If a farmer planted 5 acres per hour with a horse-drawn planter in 1900, how many acres did he plant in an 8-hour day? _____

Today's farmer can plant 50 acres per hour with a tractor and seeder. How many acres can he plant in an 8-hour day? _____

How many more acres can the farmer plant in a day now compared to 1900? _____

Research: How big is an acre? _____

● Agriculture in **Space**

Today, satellites and computers help farmers take better care of the land and grow more crops. The satellites take photos of their fields and track the exact coordinates (latitude and longitude) so farmers can plant straighter rows, identify insect or disease problems, and determine which parts of the field are most productive or need more fertilizer.

